

ARG56200 anti-Golgi antibody [AE-6]

Package: 50 µg
Store at: -20°C

Summary

Product Description	Mouse Monoclonal antibody [AE-6] recognizes Golgi
Tested Reactivity	Hu
Species Does Not React With	Ms, Rat
Tested Application	FACS, ICC/IF, IHC-P, WB
Host	Mouse
Clonality	Monoclonal
Clone	AE-6
Isotype	IgG1, kappa
Target Name	Golgi
Species	Human
Immunogen	SU-DHL-1 large cell lymphoma cells.
Conjugation	Un-conjugated

Application Instructions

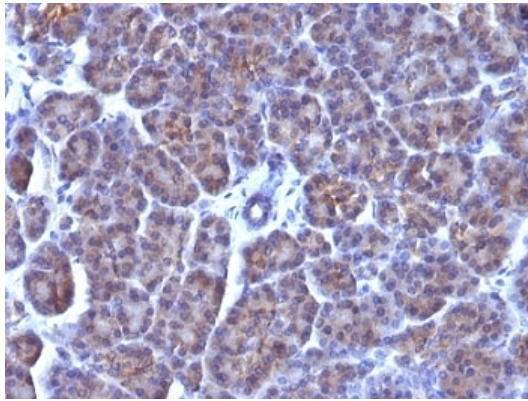
Application table	Application	Dilution
	FACS	0.5 - 1 µg/10 ⁶ cells in 0.1 ml
	ICC/IF	0.5 - 1 µg/ml
	IHC-P	0.5 - 1 µg/ml
	WB	0.5 - 1 µg/ml
Application Note	IHC-P: Antigen Retrieval: Boiling tissue sections in 10mM citrate buffer, pH 6.0, for 10-20 min followed by cooling at RT for 20 min. * The dilutions indicate recommended starting dilutions and the optimal dilutions or concentrations should be determined by the scientist.	

Properties

Form	Liquid
Purification	Purification with Protein G.
Buffer	PBS (pH 7.4), 0.05% Sodium azide and 0.1 mg/ml BSA.
Preservative	0.05% Sodium azide
Stabilizer	0.1 mg/ml BSA
Concentration	0.2 mg/ml

Storage instruction	For continuous use, store undiluted antibody at 2-8°C for up to a week. For long-term storage, aliquot and store at -20°C or below. Storage in frost free freezers is not recommended. Avoid repeated freeze/thaw cycles. Suggest spin the vial prior to opening. The antibody solution should be gently mixed before use.
Note	For laboratory research only, not for drug, diagnostic or other use.

Images



ARG56200 anti-Golgi antibody [AE-6] IHC-P image

Immunohistochemistry: Formalin-fixed and paraffin-embedded Human pancreas stained with ARG56200 anti-Golgi antibody [AE-6].
