

## ARG56203 anti-basic Cytokeratin antibody [KRTH/1076]

Package: 50 µg  
Store at: -20°C

### Summary

Product Description	Mouse Monoclonal antibody [KRTH/1076] recognizes basic Cytokeratin
Tested Reactivity	Hu, Rat
Tested Application	IHC-P
Host	Mouse
Clonality	Monoclonal
Clone	KRTH/1076
Isotype	IgG1, kappa
Target Name	basic Cytokeratin
Species	Human
Immunogen	Recombinant human KRT76 protein.
Conjugation	Un-conjugated
Alternate Names	Keratin-76; KRT2P; CK-2P; Keratin, type II cytoskeletal 2 oral; Type-II keratin Kb9; HUMCYT2A; Cytokeratin-2P; K76; KRT2B; K2P

### Application Instructions

Application table	Application	Dilution
	IHC-P	0.1 - 0.5 µg/ml
Application Note	IHC-P: Antigen Retrieval: Boil tissue section in 10 mM Citrate buffer (pH 6.0) for 10-20 min, followed by cooling at RT for 20 min. * The dilutions indicate recommended starting dilutions and the optimal dilutions or concentrations should be determined by the scientist.	

### Properties

Form	Liquid
Purification	Purification with Protein G.
Buffer	PBS (pH 7.4), 0.05% Sodium azide and 0.1 mg/ml BSA.
Preservative	0.05% Sodium azide
Stabilizer	0.1 mg/ml BSA
Concentration	0.2 mg/ml
Storage instruction	For continuous use, store undiluted antibody at 2-8°C for up to a week. For long-term storage, aliquot and store at -20°C or below. Storage in frost free freezers is not recommended. Avoid repeated freeze/thaw cycles. Suggest spin the vial prior to opening. The antibody solution should be gently mixed before use.

Note

For laboratory research only, not for drug, diagnostic or other use.

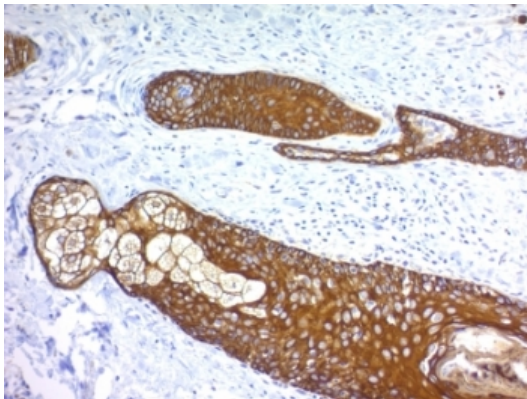
## Bioinformation

---

Database links	<a href="#">GeneID: 51350 Human</a> <a href="#">Swiss-port # Q01546 Human</a>
Gene Symbol	KRT76
Gene Full Name	keratin 76, type II
Background	Keratins are intermediate filament proteins responsible for the structural integrity of epithelial cells and are subdivided into epithelial keratins and hair keratins. The type II keratins are clustered in a region of chromosome 12q13. [provided by RefSeq, Jun 2009]
Function	Probably contributes to terminal cornification. [UniProt]
Calculated Mw	66 kDa
Cellular Localization	Cytoplasmic

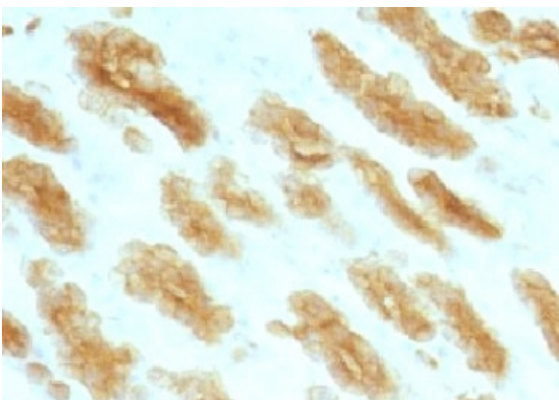
## Images

---



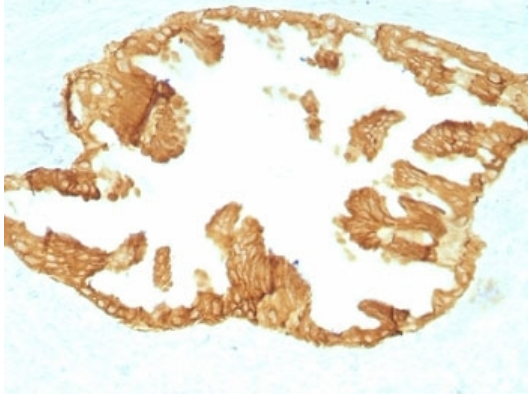
ARG56203 anti-basic Cytokeratin antibody [KRTH/1076] IHC-P image

Immunohistochemistry: Formalin-fixed and paraffin-embedded Human skin stained with ARG56203 anti-basic Cytokeratin antibody [KRTH/1076].



ARG56203 anti-basic Cytokeratin antibody [KRTH/1076] IHC-P image

Immunohistochemistry: Formalin-fixed and paraffin-embedded Rat stomach stained with ARG56203 anti-basic Cytokeratin antibody [KRTH/1076].



**ARG56203 anti-basic Cytokeratin antibody [KRTH/1076] IHC-P image**

Immunohistochemistry: Formalin-fixed and paraffin-embedded Rat oviduct stained with ARG56203 anti-basic Cytokeratin antibody [KRTH/1076].