

ARG56218 anti-PPP2R2A antibody

Package: 100 µl
Store at: -20°C

Summary

Product Description	Rabbit Polyclonal antibody recognizes PPP2R2A
Tested Reactivity	Hu
Predict Reactivity	Ms, Rat, Mk, Pig, Rb
Tested Application	ICC/IF, IHC-P, WB
Host	Rabbit
Clonality	Polyclonal
Isotype	IgG
Target Name	PPP2R2A
Species	Human
Immunogen	KLH-conjugated synthetic peptide corresponding to aa. 43-71 (N-terminus) of Human PPP2R2A.
Conjugation	Un-conjugated
Alternate Names	PR55A; B55A; Serine/threonine-protein phosphatase 2A 55 kDa regulatory subunit B alpha isoform; PP2A subunit B isoform B55-alpha; PR52A; PP2A subunit B isoform R2-alpha; PP2A subunit B isoform alpha; B55ALPHA; PP2A subunit B isoform PR55-alpha

Application Instructions

Application table	Application	Dilution
	ICC/IF	1:25
	IHC-P	1:25
	WB	1:1000
Application Note	* The dilutions indicate recommended starting dilutions and the optimal dilutions or concentrations should be determined by the scientist.	
Positive Control	ZR-75-1	

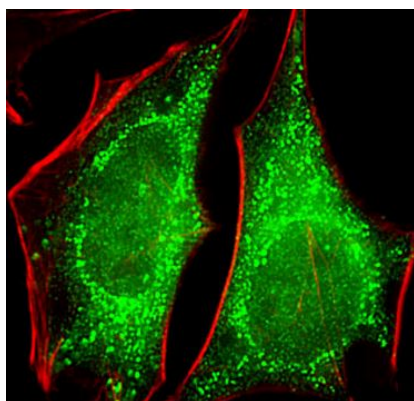
Properties

Form	Liquid
Purification	Purification with Protein A and immunogen peptide.
Buffer	PBS and 0.09% (W/V) Sodium azide.
Preservative	0.09% (W/V) Sodium azide.
Storage instruction	For continuous use, store undiluted antibody at 2-8°C for up to a week. For long-term storage, aliquot and store at -20°C. Storage in frost free freezers is not recommended. Avoid repeated freeze/thaw cycles. Suggest spin the vial prior to opening. The antibody solution should be gently mixed before use.

Bioinformation

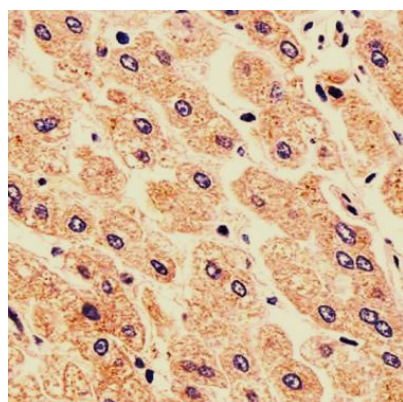
Database links	GeneID: 5520 Human Swiss-port # P63151 Human
Gene Symbol	PPP2R2A
Gene Full Name	protein phosphatase 2, regulatory subunit B, alpha
Background	The product of this gene belongs to the phosphatase 2 regulatory subunit B family. Protein phosphatase 2 is one of the four major Ser/Thr phosphatases, and it is implicated in the negative control of cell growth and division. It consists of a common heteromeric core enzyme, which is composed of a catalytic subunit and a constant regulatory subunit, that associates with a variety of regulatory subunits. The B regulatory subunit might modulate substrate selectivity and catalytic activity. This gene encodes an alpha isoform of the regulatory subunit B55 subfamily. Alternatively spliced transcript variants have been described. [provided by RefSeq, Apr 2010]
Function	The B regulatory subunit might modulate substrate selectivity and catalytic activity, and also might direct the localization of the catalytic enzyme to a particular subcellular compartment. [UniProt]
Calculated Mw	52 kDa

Images



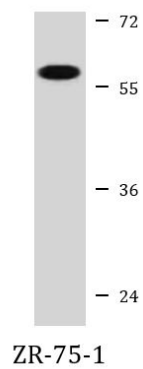
ARG56218 anti-PPP2R2A antibody ICC/IF image

Immunofluorescence: HeLa cells stained with ARG56218 anti-PPP2R2A antibody (green) at 1:25 dilution. Cytoplasmic actin was counterstained with Alexa Fluor® 555 conjugated with Phalloidin (red).



ARG56218 anti-PPP2R2A antibody IHC-P image

Immunohistochemistry: Paraffin-embedded Human liver tissue stained with ARG56218 anti-PPP2R2A antibody at 1:25 dilution.



ARG56218 anti-PPP2R2A antibody WB image

Western blot: 35 µg of ZR-75-1 cell lysate stained with ARG56218 anti-PPP2R2A antibody.