

ARG56219
anti-HMGA2 / HMGI-C antibodyPackage: 100 µl
Store at: -20°C

Summary

Product Description	Rabbit Polyclonal antibody recognizes HMGA2 / HMGI-C
Tested Reactivity	Hu, Ms
Tested Application	ICC/IF, WB
Host	Rabbit
Clonality	Polyclonal
Isotype	IgG
Target Name	HMGA2 / HMGI-C
Species	Mouse
Immunogen	KLH-conjugated synthetic peptide corresponding to aa. 72-105 (C-terminus) of Mouse HMGA2.
Conjugation	Un-conjugated
Alternate Names	9430083A20Rik; Hmgic; HMGI-C; High mobility group AT-hook protein 2; pg; pygmy; High mobility group protein HMGI-C

Application Instructions

Application table	Application	Dilution
	ICC/IF	1:25
	WB	1:1000
Application Note	* The dilutions indicate recommended starting dilutions and the optimal dilutions or concentrations should be determined by the scientist.	
Positive Control	HepG2	

Properties

Form	Liquid
Purification	Purification with Protein A and immunogen peptide.
Buffer	PBS and 0.09% (W/V) sodium azide.
Preservative	0.09% (W/V) sodium azide.
Storage instruction	For continuous use, store undiluted antibody at 2-8°C for up to a week. For long-term storage, aliquot and store at -20°C. Storage in frost free freezers is not recommended. Avoid repeated freeze/thaw cycles. Suggest spin the vial prior to opening. The antibody solution should be gently mixed before use.
Note	For laboratory research only, not for drug, diagnostic or other use.

Bioinformation

Database links

[GeneID: 15364 Mouse](#)

[GeneID: 8091 Human](#)

[Swiss-port # P52926 Human](#)

[Swiss-port # P52927 Mouse](#)

Gene Symbol Hmga2

Gene Full Name high mobility group AT-hook 2

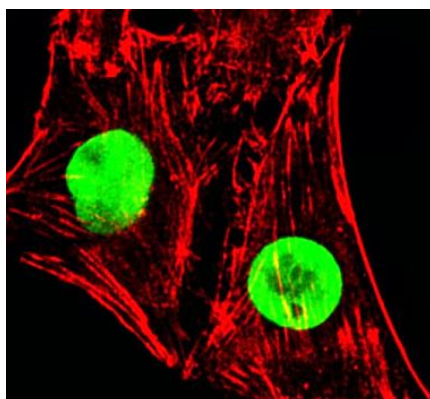
Function Functions as a transcriptional regulator. Functions in cell cycle regulation through CCNA2. Plays an important role in chromosome condensation during the meiotic G2/M transition of spermatocytes. [UniProt]

Calculated Mw 12 kDa

PTM Regulated by cell cycle-dependent phosphorylation which alters its DNA binding affinity. Phosphorylated by NEK2 (By similarity).

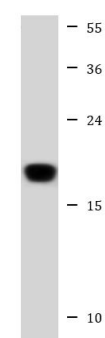
Cellular Localization Nucleus.

Images



ARG56219 anti-HMGA2 / HMGI-C antibody ICC/IF image

Immunofluorescence: C2C12 cells stained with ARG56219 anti-HMGA2 / HMGI-C antibody (green) at 1:25 dilution. Cytoplasmic actin was counterstained with Alexa Fluor® 555 conjugated with Phalloidin (red).



HepG2

ARG56219 anti-HMGA2 / HMGI-C antibody WB image

Western blot: 20 µg of HepG2 cell lysate stained with ARG56219 anti-HMGA2 / HMGI-C antibody at 1:1000 dilution.