

ARG56223 anti-Cyclophilin B antibody

Package: 100 µl
Store at: -20°C

Summary

Product Description	Rabbit Polyclonal antibody recognizes Cyclophilin B
Tested Reactivity	Hu, Ms, Rat
Tested Application	FACS, WB
Host	Rabbit
Clonality	Polyclonal
Isotype	IgG
Target Name	Cyclophilin B
Species	Human
Immunogen	KLH-conjugated synthetic peptide corresponding to aa. 161-195 of Human Cyclophilin B.
Conjugation	Un-conjugated
Alternate Names	HEL-S-39; CYPB; PPIase B; CYP-S1; Cyclophilin B; SCYLP; EC 5.2.1.8; S-cyclophilin; OI9; Rotamase B; Peptidyl-prolyl cis-trans isomerase B

Application Instructions

Application table	Application	Dilution
	FACS	1:25
	WB	1:2000
Application Note	* The dilutions indicate recommended starting dilutions and the optimal dilutions or concentrations should be determined by the scientist.	
Positive Control	HeLa	

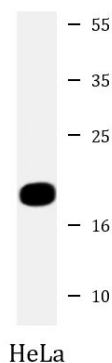
Properties

Form	Liquid
Purification	Purification with Protein G.
Buffer	PBS and 0.09% (W/V) Sodium azide.
Preservative	0.09% (W/V) Sodium azide.
Storage instruction	For continuous use, store undiluted antibody at 2-8°C for up to a week. For long-term storage, aliquot and store at -20°C. Storage in frost free freezers is not recommended. Avoid repeated freeze/thaw cycles. Suggest spin the vial prior to opening. The antibody solution should be gently mixed before use.
Note	For laboratory research only, not for drug, diagnostic or other use.

Bioinformation

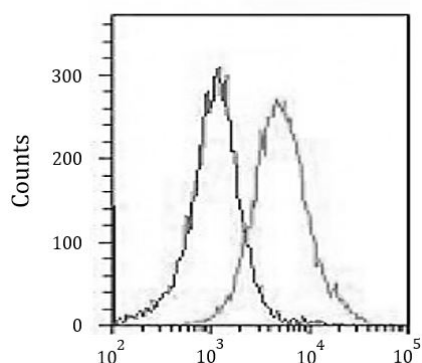
Gene Symbol	PPIB
Gene Full Name	peptidylprolyl isomerase B (cyclophilin B)
Background	The protein encoded by this gene is a cyclosporine-binding protein and is mainly located within the endoplasmic reticulum. It is associated with the secretory pathway and released in biological fluids. This protein can bind to cells derived from T- and B-lymphocytes, and may regulate cyclosporine A-mediated immunosuppression. Variants have been identified in this protein that give rise to recessive forms of osteogenesis imperfecta. [provided by RefSeq, Oct 2009]
Function	PPIases accelerate the folding of proteins. It catalyzes the cis-trans isomerization of proline imidic peptide bonds in oligopeptides. [UniProt]
Calculated Mw	24 kDa

Images



ARG56223 anti-Cyclophilin B antibody WB image

Western blot: 20 µg of HeLa cell lysate stained with ARG56223 anti-Cyclophilin B antibody at 1:2000 dilution.



ARG56223 anti-Cyclophilin B antibody FACS image

Flow Cytometry: HeLa cells were fixed with 2% paraformaldehyde (10 min) and then permeabilized with 90% methanol for 10 min. The cells were incubated in 2% BSA to block non-specific protein-protein interactions and stained with ARG56223 anti-Cyclophilin B antibody (right histogram) at 1:25 dilution for 60 min at 37°C, followed by incubation with DyLight® 488 labelled secondary antibody. Isotype control antibody (left histogram) was Rabbit IgG (1 µg/10⁶ cells) used under the same conditions. Acquisition of > 10000 events was performed.