

ARG56226 anti-Calcitonin Receptor antibody

Package: 100 µl
Store at: -20°C

Summary

| | |
|---------------------|--|
| Product Description | Rabbit Polyclonal antibody recognizes Calcitonin Receptor |
| Tested Reactivity | Hu |
| Tested Application | FACS, ICC/IF, WB |
| Host | Rabbit |
| Clonality | Polyclonal |
| Isotype | IgG |
| Target Name | Calcitonin Receptor |
| Species | Human |
| Immunogen | KLH-conjugated synthetic peptide corresponding to aa. 445-474 (C-terminus) of Human Calcitonin Receptor. |
| Conjugation | Un-conjugated |
| Alternate Names | CT-R; CTR1; CTR; CRT; Calcitonin receptor |

Application Instructions

| Application table | Application | Dilution |
|-------------------|--|-------------|
| | FACS | 1:10 - 1:50 |
| | ICC/IF | 1:10 - 1:50 |
| | WB | 1:1000 |
| Application Note | * The dilutions indicate recommended starting dilutions and the optimal dilutions or concentrations should be determined by the scientist. | |
| Positive Control | MCF7 | |

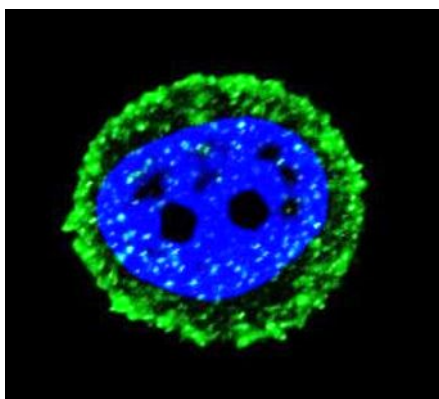
Properties

| | |
|---------------------|---|
| Form | Liquid |
| Purification | Purification with Protein A and immunogen peptide. |
| Buffer | PBS and 0.09% (W/V) Sodium azide. |
| Preservative | 0.09% (W/V) Sodium azide. |
| Storage instruction | For continuous use, store undiluted antibody at 2-8°C for up to a week. For long-term storage, aliquot and store at -20°C. Storage in frost free freezers is not recommended. Avoid repeated freeze/thaw cycles. Suggest spin the vial prior to opening. The antibody solution should be gently mixed before use. |
| Note | For laboratory research only, not for drug, diagnostic or other use. |

Bioinformation

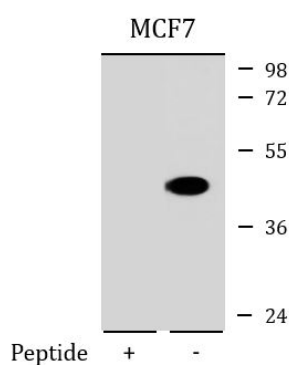
| | |
|-----------------------|---|
| Database links | GeneID: 799 Human Swiss-port # P30988 Human |
| Gene Symbol | CALCR |
| Gene Full Name | calcitonin receptor |
| Background | This gene encodes a high affinity receptor for the peptide hormone calcitonin and belongs to a subfamily of seven transmembrane-spanning G protein-coupled receptors. The encoded protein is involved in maintaining calcium homeostasis and in regulating osteoclast-mediated bone resorption. Polymorphisms in this gene have been associated with variations in bone mineral density and onset of osteoporosis. Alternate splicing results in multiple transcript variants. [provided by RefSeq, Sep 2009] |
| Function | This is a receptor for calcitonin. The activity of this receptor is mediated by G proteins which activate adenylyl cyclase. The calcitonin receptor is thought to couple to the heterotrimeric guanosine triphosphate-binding protein that is sensitive to cholera toxin. [UniProt] |
| Calculated Mw | 55 kDa |
| Cellular Localization | Cell membrane; Multi-pass membrane protein. |

Images



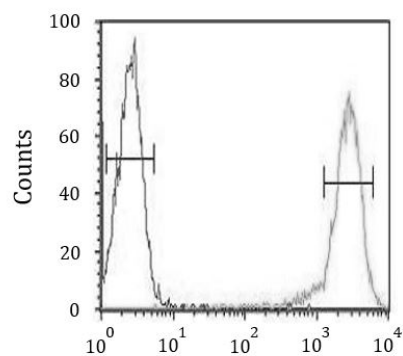
ARG56226 anti-Calcitonin Receptor antibody ICC/IF image

Immunofluorescence: MCF7 cells stained with ARG56226 anti-Calcitonin Receptor antibody (green). DAPI (blue) for nuclear staining.



ARG56226 anti-Calcitonin Receptor antibody WB image

Western blot: 35 µg of MCF7 cell lysate stained with ARG56226 anti-Calcitonin Receptor antibody at 1:1000 dilution with (+) or without (-) blocking peptides.



ARG56226 anti-Calcitonin Receptor antibody FACS image

Flow Cytometry: HL-60 cells stained with ARG56226 anti-Calcitonin Receptor antibody (right histogram) or without primary antibody control (left histogram), followed by incubation with FITC labelled secondary antibody.