

## ARG56242 anti-CAPG antibody

Package: 50 µl  
Store at: -20°C

### Summary

Product Description	Rabbit Polyclonal antibody recognizes CAPG
Tested Reactivity	Hu, Ms, Rat
Tested Application	IHC-P, WB
Host	Rabbit
Clonality	Polyclonal
Isotype	IgG
Target Name	CAPG
Species	Human
Immunogen	Recombinant protein of Human CAPG
Conjugation	Un-conjugated
Alternate Names	AFCP; Macrophage-capping protein; HEL-S-66; Actin regulatory protein CAP-G; MCP

### Application Instructions

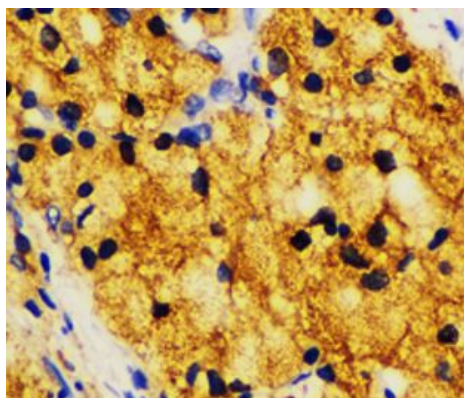
Application table	Application	Dilution
	IHC-P	1:50 - 1:200
	WB	1:500 - 1:2000
Application Note	* The dilutions indicate recommended starting dilutions and the optimal dilutions or concentrations should be determined by the scientist.	
Positive Control	Mouse lung and HL60	

### Properties

Form	Liquid
Purification	Affinity purification with immunogen.
Buffer	PBS (pH 7.3), 0.02% Sodium azide and 50% Glycerol.
Preservative	0.02% Sodium azide
Stabilizer	50% Glycerol
Storage instruction	For continuous use, store undiluted antibody at 2-8°C for up to a week. For long-term storage, aliquot and store at -20°C. Storage in frost free freezers is not recommended. Avoid repeated freeze/thaw cycles. Suggest spin the vial prior to opening. The antibody solution should be gently mixed before use.
Note	For laboratory research only, not for drug, diagnostic or other use.

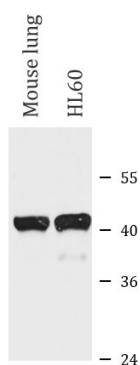
Database links	<a href="#">GeneID: 297339 Rat</a> <a href="#">GeneID: 822 Human</a> <a href="#">Swiss-port # P40121 Human</a> <a href="#">Swiss-port # Q6AYC4 Rat</a>
Gene Symbol	CAPG
Gene Full Name	capping protein (actin filament), gelsolin-like
Background	This gene encodes a member of the gelsolin/villin family of actin-regulatory proteins. The encoded protein reversibly blocks the barbed ends of F-actin filaments in a Ca <sup>2+</sup> and phosphoinositide-regulated manner, but does not sever preformed actin filaments. By capping the barbed ends of actin filaments, the encoded protein contributes to the control of actin-based motility in non-muscle cells. Alternatively spliced transcript variants have been observed for this gene. [provided by RefSeq, Jan 2012]
Function	Calcium-sensitive protein which reversibly blocks the barbed ends of actin filaments but does not sever preformed actin filaments. May play an important role in macrophage function. May play a role in regulating cytoplasmic and/or nuclear structures through potential interactions with actin. May bind DNA. [UniProt]
Calculated Mw	38 kDa
PTM	The N-terminus is blocked.

## Images



ARG56242 anti-CAPG antibody IHC-P image

Immunohistochemistry: Paraffin-embedded Human lung cancer stained with ARG56242 anti-CAPG antibody at 1:100 dilution.



ARG56242 anti-CAPG antibody WB image

Western blot: Mouse lung and HL60 cell lysates stained with ARG56242 anti-CAPG antibody.