

ARG56260 anti-GIPC2 antibody

Package: 100 µl
Store at: -20°C

Summary

Product Description	Rabbit Polyclonal antibody recognizes GIPC2
Tested Reactivity	Hu
Tested Application	WB
Host	Rabbit
Clonality	Polyclonal
Isotype	IgG
Target Name	GIPC2
Species	Human
Immunogen	Recombinant protein of Human GIPC2
Conjugation	Un-conjugated
Alternate Names	PDZ domain-containing protein GIPC2; SEMCAP2; SEMCAP-2

Application Instructions

Application table	Application	Dilution
	WB	1:500 - 1:2000
Application Note	* The dilutions indicate recommended starting dilutions and the optimal dilutions or concentrations should be determined by the scientist.	
Positive Control	HT-29	

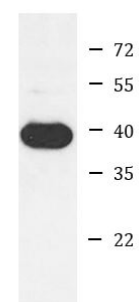
Properties

Form	Liquid
Purification	Affinity purification with immunogen.
Buffer	PBS (pH 7.3), 0.02% Sodium azide and 50% Glycerol.
Preservative	0.02% Sodium azide
Stabilizer	50% Glycerol
Storage instruction	For continuous use, store undiluted antibody at 2-8°C for up to a week. For long-term storage, aliquot and store at -20°C. Storage in frost free freezers is not recommended. Avoid repeated freeze/thaw cycles. Suggest spin the vial prior to opening. The antibody solution should be gently mixed before use.
Note	For laboratory research only, not for drug, diagnostic or other use.

Bioinformation

Database links	GeneID: 54810 Human Swiss-port # Q8TF65 Human
Gene Symbol	GIPC2
Gene Full Name	GIPC PDZ domain containing family, member 2
Calculated Mw	34 kDa

Images



HT-29

ARG56260 anti-GIPC2 antibody WB image

Western blot: HT-29 cell lysate stained with ARG56260 anti-GIPC2 antibody.