

## ARG56293 anti-MRPL1 antibody

Package: 100 µl  
Store at: -20°C

### Summary

Product Description	Rabbit Polyclonal antibody recognizes MRPL1
Tested Reactivity	Hu, Rat
Tested Application	WB
Host	Rabbit
Clonality	Polyclonal
Isotype	IgG
Target Name	MRPL1
Species	Human
Immunogen	Recombinant protein of Human MRPL1
Conjugation	Un-conjugated
Alternate Names	39S ribosomal protein L1, mitochondrial; MRP-L1; BM022; L1mt; L1MT

### Application Instructions

Application table	Application	Dilution
	WB	1:500-1:2000
Application Note	* The dilutions indicate recommended starting dilutions and the optimal dilutions or concentrations should be determined by the scientist.	
Positive Control	HeLa	

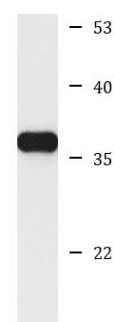
### Properties

Form	Liquid
Purification	Affinity purification with immunogen.
Buffer	PBS (pH 7.3), 0.02% Sodium azide and 50% Glycerol.
Preservative	0.02% Sodium azide
Stabilizer	50% Glycerol
Storage instruction	For continuous use, store undiluted antibody at 2-8°C for up to a week. For long-term storage, aliquot and store at -20°C. Storage in frost free freezers is not recommended. Avoid repeated freeze/thaw cycles. Suggest spin the vial prior to opening. The antibody solution should be gently mixed before use.
Note	For laboratory research only, not for drug, diagnostic or other use.

### Bioinformation

Database links	<a href="#">GeneID: 65008 Human</a> <a href="#">Swiss-port # Q9BYD6 Human</a>
Gene Symbol	MRPL1
Gene Full Name	mitochondrial ribosomal protein L1
Background	<p>Mammalian mitochondrial ribosomal proteins are encoded by nuclear genes and help in protein synthesis within the mitochondrion. Mitochondrial ribosomes (mitoribosomes) consist of a small 28S subunit and a large 39S subunit. They have an estimated 75% protein to rRNA composition compared to prokaryotic ribosomes, where this ratio is reversed. Another difference between mammalian mitoribosomes and prokaryotic ribosomes is that the latter contain a 5S rRNA. Among different species, the proteins comprising the mitoribosome differ greatly in sequence, and sometimes in biochemical properties, which prevents easy recognition by sequence homology. This gene encodes a 39S subunit protein that belongs to the L1 ribosomal protein family. [provided by RefSeq, Jul 2008]</p>
Calculated Mw	37 kDa

## Images



HeLa

ARG56293 anti-MRPL1 antibody WB image

Western blot: HeLa cell lysate stained with ARG56293 anti-MRPL1 antibody.