

ARG56319 anti-ELAVL3 / HUC antibody

Package: 100 µl
Store at: -20°C

Summary

Product Description	Rabbit Polyclonal antibody recognizes ELAVL3 / HUC
Tested Reactivity	Hu, Ms, Rat
Tested Application	ICC/IF, IHC-P, WB
Host	Rabbit
Clonality	Polyclonal
Isotype	IgG
Target Name	ELAVL3 / HUC
Species	Human
Immunogen	Synthetic peptide of Human ELAVL3 / HUC
Conjugation	Un-conjugated
Alternate Names	Paraneoplastic limbic encephalitis antigen 21; HUCL; HuC; Hu-antigen C; PLE21; ELAV-like protein 3; Paraneoplastic cerebellar degeneration-associated antigen; HUC

Application Instructions

Application table	Application	Dilution
	ICC/IF	1:50 - 1:200
	IHC-P	1:50 - 1:200
	WB	1:500 - 1:1000
Application Note	* The dilutions indicate recommended starting dilutions and the optimal dilutions or concentrations should be determined by the scientist.	
Positive Control	Mouse spinal cord	

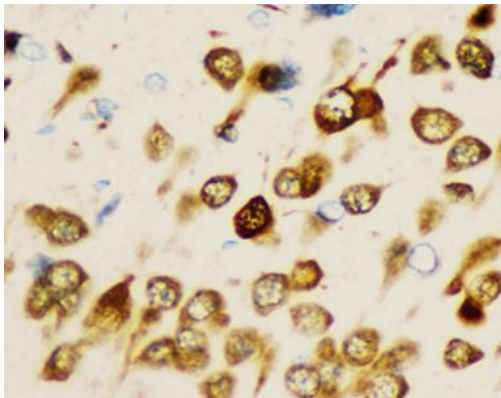
Properties

Form	Liquid
Purification	Affinity purification with immunogen.
Buffer	PBS (pH 7.3), 0.02% Sodium azide and 50% Glycerol.
Preservative	0.02% Sodium azide
Stabilizer	50% Glycerol
Storage instruction	For continuous use, store undiluted antibody at 2-8°C for up to a week. For long-term storage, aliquot and store at -20°C. Storage in frost free freezers is not recommended. Avoid repeated freeze/thaw cycles. Suggest spin the vial prior to opening. The antibody solution should be gently mixed before use.
Note	For laboratory research only, not for drug, diagnostic or other use.

Bioinformation

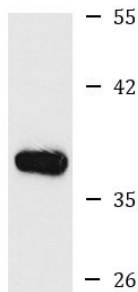
Database links	GeneID: 15571 Mouse GeneID: 1995 Human Swiss-port # Q14576 Human Swiss-port # Q60900 Mouse
Gene Symbol	ELAVL3
Gene Full Name	ELAV like neuron-specific RNA binding protein 3
Background	A member of the ELAVL protein family, ELAV-like 3 is a neural-specific RNA-binding protein which contains three RNP-type RNA recognition motifs. The observation that ELAVL3 is one of several Hu antigens (neuronal-specific RNA-binding proteins) recognized by the anti-Hu serum antibody present in sera from patients with paraneoplastic encephalomyelitis and sensory neuronopathy (PEM/PSN) suggests it has a role in neurogenesis. Two alternatively spliced transcript variants encoding distinct isoforms have been found for this gene. [provided by RefSeq, Jul 2008]
Function	Binds to AU-rich sequences (AREs) of target mRNAs, including VEGF mRNA. May also bind poly-A tracts via RRM 3 (By similarity). May be involved in neuronal differentiation and maintenance. [UniProt]
Calculated Mw	40 kDa

Images



ARG56319 anti-ELAVL3 / HUC antibody IHC-P image

Immunohistochemistry: Paraffin-embedded Rat brain stained with ARG56319 anti-ELAVL3 / HUC antibody at 1:200 dilution.



Mouse spinal cord

ARG56319 anti-ELAVL3 / HUC antibody WB image

Western blot: Mouse spinal cord lysate stained with ARG56319 anti-ELAVL3 / HUC antibody.