

## ARG56346 anti-delta Sarcoglycan antibody

Package: 100 µl  
Store at: -20°C

### Summary

Product Description	Rabbit Polyclonal antibody recognizes delta Sarcoglycan
Tested Reactivity	Hu, Ms, Rat
Tested Application	IHC-P, WB
Host	Rabbit
Clonality	Polyclonal
Isotype	IgG
Target Name	delta Sarcoglycan
Species	Human
Immunogen	Recombinant protein of Human delta Sarcoglycan
Conjugation	Un-conjugated
Alternate Names	DAGD; 35DAG; SG-delta; Delta-sarcoglycan; Delta-SG; CMD1L; 35 kDa dystrophin-associated glycoprotein; SGCDP; SGD

### Application Instructions

Application table	Application	Dilution
	IHC-P	1:50 - 1:200
	WB	1:500 - 1:2000
Application Note	* The dilutions indicate recommended starting dilutions and the optimal dilutions or concentrations should be determined by the scientist.	
Positive Control	Jurkat	

### Properties

Form	Liquid
Purification	Affinity purification with immunogen.
Buffer	PBS (pH 7.3), 0.02% Sodium azide and 50% Glycerol.
Preservative	0.02% Sodium azide
Stabilizer	50% Glycerol
Storage instruction	For continuous use, store undiluted antibody at 2-8°C for up to a week. For long-term storage, aliquot and store at -20°C. Storage in frost free freezers is not recommended. Avoid repeated freeze/thaw cycles. Suggest spin the vial prior to opening. The antibody solution should be gently mixed before use.
Note	For laboratory research only, not for drug, diagnostic or other use.

## Bioinformation

---

### Database links

[GeneID: 24052 Mouse](#)

[GeneID: 6444 Human](#)

[Swiss-port # P82347 Mouse](#)

[Swiss-port # Q92629 Human](#)

### Gene Symbol

SGCD

### Gene Full Name

sarcoglycan, delta (35kDa dystrophin-associated glycoprotein)

### Background

The protein encoded by this gene is one of the four known components of the sarcoglycan complex, which is a subcomplex of the dystrophin-glycoprotein complex (DGC). DGC forms a link between the F-actin cytoskeleton and the extracellular matrix. This protein is expressed most abundantly in skeletal and cardiac muscle. Mutations in this gene have been associated with autosomal recessive limb-girdle muscular dystrophy and dilated cardiomyopathy. Alternatively spliced transcript variants encoding distinct isoforms have been observed for this gene. [provided by RefSeq, Jul 2008]

### Function

Component of the sarcoglycan complex, a subcomplex of the dystrophin-glycoprotein complex which forms a link between the F-actin cytoskeleton and the extracellular matrix. [UniProt]

### Calculated Mw

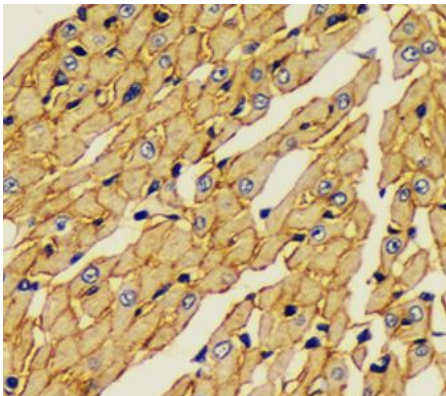
32 kDa

### PTM

Glycosylated.  
Disulfide bonds are present.

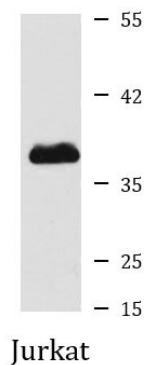
## Images

---



ARG56346 anti-delta Sarcoglycan antibody IHC-P image

Immunohistochemistry: Paraffin-embedded Rat heart stained with ARG56346 anti-delta Sarcoglycan antibody at 1:100 dilution.



ARG56346 anti-delta Sarcoglycan antibody WB image

Western blot: Jurkat cell lysate stained with ARG56346 anti-delta Sarcoglycan antibody.