

## ARG56359 anti-NAA50 / NAT13 antibody

Package: 100 µl  
Store at: -20°C

### Summary

Product Description	Rabbit Polyclonal antibody recognizes NAA50 / NAT13
Tested Reactivity	Hu, Ms, Rat
Tested Application	ICC/IF, WB
Host	Rabbit
Clonality	Polyclonal
Isotype	IgG
Target Name	NAA50 / NAT13
Species	Human
Immunogen	Recombinant protein of Human NAA50 / NAT13
Conjugation	Un-conjugated
Alternate Names	N-acetyltransferase 13; SAN; N-alpha-acetyltransferase 50; NatE catalytic subunit; MAK3; hSAN; NAT5P; NAT5; hNAT5; N-acetyltransferase 5; EC 2.3.1.-; N-acetyltransferase san homolog; NAT13; NAT13P

### Application Instructions

Application table	Application	Dilution
	ICC/IF	1:50 - 1:200
	WB	1:500 - 1:2000
Application Note	* The dilutions indicate recommended starting dilutions and the optimal dilutions or concentrations should be determined by the scientist.	
Positive Control	SKOV3	

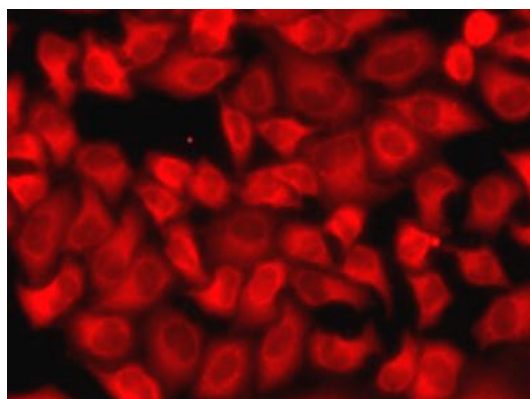
### Properties

Form	Liquid
Purification	Affinity purification with immunogen.
Buffer	PBS (pH 7.3), 0.02% Sodium azide and 50% Glycerol.
Preservative	0.02% Sodium azide
Stabilizer	50% Glycerol
Storage instruction	For continuous use, store undiluted antibody at 2-8°C for up to a week. For long-term storage, aliquot and store at -20°C. Storage in frost free freezers is not recommended. Avoid repeated freeze/thaw cycles. Suggest spin the vial prior to opening. The antibody solution should be gently mixed before use.
Note	For laboratory research only, not for drug, diagnostic or other use.

## Bioinformation

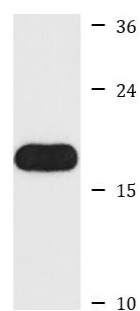
Database links	<a href="#">GeneID: 72117 Mouse</a>
	<a href="#">GeneID: 80218 Human</a>
	<a href="#">Swiss-port # Q6PGB6 Mouse</a>
	<a href="#">Swiss-port # Q9GZZ1 Human</a>
Gene Symbol	NAA50
Gene Full Name	N(alpha)-acetyltransferase 50, NatE catalytic subunit
Function	Probable catalytic component of the NAA11-NAA15 complex which displays alpha (N-terminal) acetyltransferase activity. [UniProt]
Calculated Mw	19 kDa

## Images



ARG56359 anti-NAA50 / NAT13 antibody ICC/IF image

Immunofluorescence: A549 cells stained with ARG56359 anti-NAA50 / NAT13 antibody.



SKOV3

ARG56359 anti-NAA50 / NAT13 antibody WB image

Western blot: SKOV3 cell lysate stained with ARG56359 anti-NAA50 / NAT13 antibody.