

ARG56376
anti-RPL36 antibodyPackage: 100 µl
Store at: -20°C

Summary

Product Description	Rabbit Polyclonal antibody recognizes RPL36
Tested Reactivity	Hu, Ms, Rat
Tested Application	ICC/IF, IHC-P, WB
Host	Rabbit
Clonality	Polyclonal
Isotype	IgG
Target Name	RPL36
Species	Human
Immunogen	Recombinant protein of Human RPL36
Conjugation	Un-conjugated
Alternate Names	L36; 60S ribosomal protein L36

Application Instructions

Application table	Application	Dilution
	ICC/IF	1:50 - 1:100
	IHC-P	1:50 - 1:100
	WB	1:500 - 1:1000
Application Note	* The dilutions indicate recommended starting dilutions and the optimal dilutions or concentrations should be determined by the scientist.	
Positive Control	HeLa	

Properties

Form	Liquid
Purification	Affinity purification with immunogen.
Buffer	PBS (pH 7.3), 0.02% Sodium azide and 50% Glycerol.
Preservative	0.02% sodium azide
Stabilizer	50% Glycerol
Storage instruction	For continuous use, store undiluted antibody at 2-8°C for up to a week. For long-term storage, aliquot and store at -20°C. Storage in frost free freezers is not recommended. Avoid repeated freeze/thaw cycles. Suggest spin the vial prior to opening. The antibody solution should be gently mixed before use.
Note	For laboratory research only, not for drug, diagnostic or other use.

Bioinformation

Database links

[GeneID: 25873 Human](#)

[GeneID: 58927 Rat](#)

[Swiss-port # P39032 Rat](#)

[Swiss-port # Q9Y3U8 Human](#)

Gene Symbol

RPL36

Gene Full Name

ribosomal protein L36

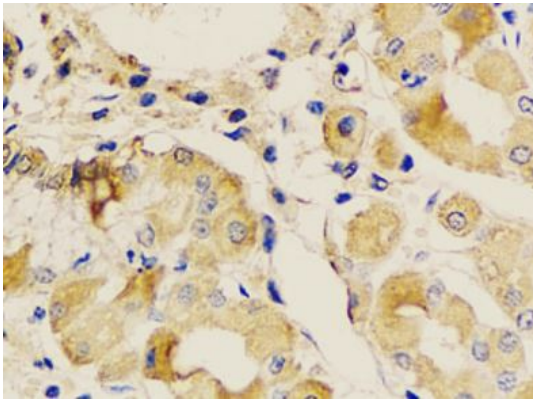
Background

Ribosomes, the organelles that catalyze protein synthesis, consist of a small 40S subunit and a large 60S subunit. Together these subunits are composed of 4 RNA species and approximately 80 structurally distinct proteins. This gene encodes a ribosomal protein that is a component of the 60S subunit. The protein belongs to the L36E family of ribosomal proteins. It is located in the cytoplasm. Transcript variants derived from alternative splicing exist; they encode the same protein. As is typical for genes encoding ribosomal proteins, there are multiple processed pseudogenes of this gene dispersed through the genome. [provided by RefSeq, Jul 2008]

Calculated Mw

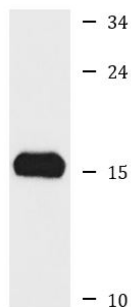
12 kDa

Images



ARG56376 anti-RPL36 antibody IHC-P image

Immunohistochemistry: Paraffin-embedded Human gastric stained with ARG56376 anti-RPL36 antibody at 1:100 dilution.



HeLa

ARG56376 anti-RPL36 antibody WB image

Western blot: HeLa cell lysate stained with ARG56376 anti-RPL36 antibody.