

ARG56382 anti-PHF21B antibody

Package: 100 µl
Store at: -20°C

Summary

Product Description	Rabbit Polyclonal antibody recognizes PHF21B
Tested Reactivity	Hu, Ms, Rat
Tested Application	WB
Host	Rabbit
Clonality	Polyclonal
Isotype	IgG
Target Name	PHF21B
Species	Human
Immunogen	Recombinant protein of Human PHF21B
Conjugation	Un-conjugated
Alternate Names	BHC80L; PHF4; PHD finger protein 21B

Application Instructions

Application table	Application	Dilution
	WB	1:500 - 1:2000
Application Note	* The dilutions indicate recommended starting dilutions and the optimal dilutions or concentrations should be determined by the scientist.	
Positive Control	Mouse brain	

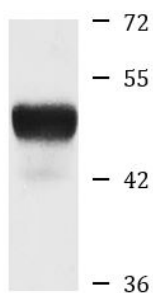
Properties

Form	Liquid
Purification	Affinity purification with immunogen.
Buffer	PBS (pH 7.3), 0.02% Sodium azide and 50% Glycerol.
Preservative	0.02% Sodium azide
Stabilizer	50% Glycerol
Storage instruction	For continuous use, store undiluted antibody at 2-8°C for up to a week. For long-term storage, aliquot and store at -20°C. Storage in frost free freezers is not recommended. Avoid repeated freeze/thaw cycles. Suggest spin the vial prior to opening. The antibody solution should be gently mixed before use.
Note	For laboratory research only, not for drug, diagnostic or other use.

Bioinformation

Database links	GeneID: 112885 Human
	GeneID: 271305 Mouse
	Swiss-port # Q8C966 Mouse
	Swiss-port # Q96EK2 Human
Gene Symbol	PHF21B
Gene Full Name	PHD finger protein 21B
Calculated Mw	57 kDa

Images



Mouse brain

ARG56382 anti-PHF21B antibody WB image

Western blot: Mouse brain lysate stained with ARG56382 anti-PHF21B antibody.