

ARG56494 anti-Prostaglandin E Synthase (microsomal) antibody

Package: 250 µl

Store at: -20°C

Summary

| | |
|---------------------|--|
| Product Description | Rabbit Polyclonal antibody recognizes Prostaglandin E Synthase (microsomal) |
| Tested Reactivity | Hu, Ms, Rat, Sheep |
| Tested Application | IHC-P, WB |
| Specificity | This antibody does not react to cPGES. |
| Host | Rabbit |
| Clonality | Polyclonal |
| Isotype | IgG |
| Target Name | Prostaglandin E Synthase (microsomal) |
| Species | Human |
| Immunogen | Synthetic peptide around an internal region of Human Prostaglandin E Synthase (microsomal). |
| Conjugation | Un-conjugated |
| Alternate Names | Microsomal glutathione S-transferase 1-like 1; EC 5.3.99.3; p53-induced gene 12 protein; PIG12; MGST1L1; TP53I12; MGST-IV; Microsomal prostaglandin E synthase 1; Prostaglandin E synthase; PGES; MPGES-1; MGST1-L1; mPGES-1; PP1294; PP102; MPGES |

Application Instructions

| Application table | Application | Dilution |
|-------------------|-------------|---------------|
| | IHC-P | 1:125 - 1:250 |
| | WB | 1:200 |

Application Note * The dilutions indicate recommended starting dilutions and the optimal dilutions or concentrations should be determined by the scientist.

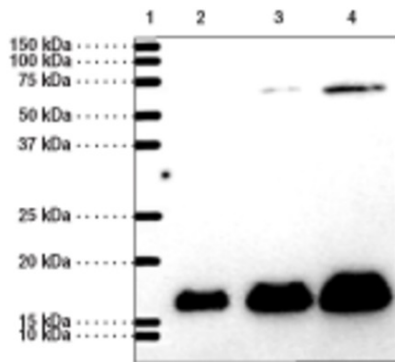
Properties

| | |
|---------------------|---|
| Form | Liquid |
| Purification | Affinity purification with immunogen. |
| Buffer | TBS (pH 7.4), 0.02% Sodium azide, 50% Glycerol and 0.1% BSA. |
| Preservative | 0.02% Sodium azide |
| Stabilizer | 50% Glycerol and 0.1% BSA |
| Storage instruction | For continuous use, store undiluted antibody at 2-8°C for up to a week. For long-term storage, aliquot and store at -20°C. Storage in frost free freezers is not recommended. Avoid repeated freeze/thaw cycles. Suggest spin the vial prior to opening. The antibody solution should be gently mixed before use. |
| Note | For laboratory research only, not for drug, diagnostic or other use. |

Bioinformation

| | |
|----------------|---|
| Database links | GeneID: 64292 Mouse GeneID: 9536 Human Swiss-port # O14684 Human Swiss-port # Q9JM51 Mouse |
| Gene Symbol | PTGES |
| Gene Full Name | prostaglandin E synthase |
| Background | The protein encoded by this gene is a glutathione-dependent prostaglandin E synthase. The expression of this gene has been shown to be induced by proinflammatory cytokine interleukin 1 beta (IL1B). Its expression can also be induced by tumor suppressor protein TP53, and may be involved in TP53 induced apoptosis. Knockout studies in mice suggest that this gene may contribute to the pathogenesis of collagen-induced arthritis and mediate acute pain during inflammatory responses. [provided by RefSeq, Jul 2008] |
| Function | Catalyzes the oxidoreduction of prostaglandin endoperoxide H2 (PGH2) to prostaglandin E2 (PGE2). [UniProt] |
| Highlight | Related products: Prostaglandin E Synthase antibodies; Anti-Rabbit IgG secondary antibodies; Related news: More effective cocktail therapy for cancer immune evasion |
| Calculated Mw | 17 kDa |

Images



ARG56494 anti-Prostaglandin E Synthase (microsomal) antibody WB image

Western blot: 1) Precision Plus Protein Standard, 2) 2 μ g of Ram Seminal Vesicles, 3) 5 μ g of Ram Seminal Vesicles, and 4) 10 μ g of Ram Seminal Vesicles stained with ARG56494 anti-Prostaglandin E Synthase (microsomal) antibody.