

ARG56495 anti-Prostaglandin E synthase 2 antibody

Package: 50 µg
Store at: -20°C

Summary

Product Description	Rabbit Polyclonal antibody recognizes Prostaglandin E synthase 2
Tested Reactivity	Hu, Ms, Rat, AGMK, Bov, Sheep
Predict Reactivity	Macaq
Tested Application	IHC-P, WB
Specificity	This antibody does not react to mPGE synthase-1 and Cytosolic PGE synthase.
Host	Rabbit
Clonality	Polyclonal
Isotype	IgG
Target Name	Prostaglandin E synthase 2
Species	Human
Immunogen	KLH-conjugated synthetic peptide around aa. 221-235 of Human Prostaglandin E synthase 2. (VYGGKEARTEEMKWR)
Conjugation	Un-conjugated
Alternate Names	C9orf15; mPGE synthase-2; EC 5.3.99.3; Prostaglandin-H; Membrane-associated prostaglandin E synthase-2; GBF1; PGES2; 2; Prostaglandin E synthase 2; GBF-1; mPGES-2; Microsomal prostaglandin E synthase 2

Application Instructions

Application table	Application	Dilution
	IHC-P	Assay-dependent
	WB	Assay-dependent
Application Note	* The dilutions indicate recommended starting dilutions and the optimal dilutions or concentrations should be determined by the scientist.	

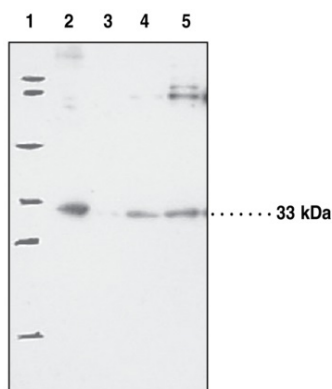
Properties

Form	Liquid
Purification	Affinity purification with immunogen.
Storage instruction	For continuous use, store undiluted antibody at 2-8°C for up to a week. For long-term storage, aliquot and store at -20°C. Storage in frost free freezers is not recommended. Avoid repeated freeze/thaw cycles. Suggest spin the vial prior to opening. The antibody solution should be gently mixed before use.
Note	For laboratory research only, not for drug, diagnostic or other use.

Bioinformation

Database links	GeneID: 80142 Human
	GeneID: 96979 Mouse
	Swiss-port # Q8BWM0 Mouse
	Swiss-port # Q9H7Z7 Human
Gene Symbol	PTGES2
Gene Full Name	prostaglandin E synthase 2
Background	The protein encoded by this gene is a membrane-associated prostaglandin E synthase, which catalyzes the conversion of prostaglandin H2 to prostaglandin E2. This protein also has been shown to activate the transcription regulated by a gamma-interferon-activated transcription element (GATE). Multiple transcript variants have been found for this gene. [provided by RefSeq, Jun 2009]
Function	Isomerase that catalyzes the conversion of PGH2 into the more stable prostaglandin E2 (PGE2). [UniProt]
Calculated Mw	42 kDa

Images



ARG56495 anti-Prostaglandin E synthase 2 antibody WB image

Western blot: 1) Precision Plus Protein Standard, 2) 30 µg of Mouse heart homogenate, 3) 30 µg of Bovine aorta homogenate, 4) 30 µg of Ram seminal vesicle microsome, and 5) 10 µg of COS-7 cell lysate stained with ARG56495 anti-Prostaglandin E synthase 2 antibody.