

## ARG56504 anti-Prostaglandin I Synthase antibody [isn-1]

Package: 100 µg  
Store at: -20°C

### Summary

|                     |   |
|---------------------|---|
| Product Description | Mouse Monoclonal antibody [isn-1] recognizes Prostaglandin I Synthase                   |
| Tested Reactivity   | Ms, Rat, Bov, Gpig, Rb, Sheep   |
| Tested Application  | ICC/IF, IHC-P, IP   |
| Host                | Mouse   |
| Clonality           | Monoclonal  |
| Clone               | isn-1   |
| Isotype             | IgG1  |
| Target Name         | Prostaglandin I Synthase  |
| Species             | Bovine  |
| Immunogen           | Bovine lung Prostaglandin I Synthase.   |
| Conjugation         | Un-conjugated   |
| Alternate Names     | PTGI; CYP8A1; Prostaglandin I2 synthase; EC 5.3.99.4; PGIS; Prostacyclin synthase; CYP8 |

### Application Instructions

| Application table | Application  | Dilution  |
|-------------------|--|-----------|
|                   | ICC/IF   | 15 µg/ml  |
|                   | IHC-P  | 15 µg/ml  |
|                   | IP   | 2.5 µg/ml |
| Application Note  | * The dilutions indicate recommended starting dilutions and the optimal dilutions or concentrations should be determined by the scientist. |           |

### Properties

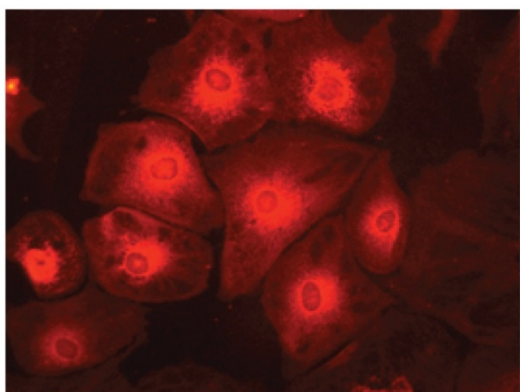
|                     |   |
|---------------------|---|
| Form                | Liquid  |
| Buffer              | TBS (pH 7.4)  |
| Concentration       | 1 mg/ml   |
| Storage instruction | For continuous use, store undiluted antibody at 2-8°C for up to a week. For long-term storage, aliquot and store at -20°C. Storage in frost free freezers is not recommended. Avoid repeated freeze/thaw cycles. Suggest spin the vial prior to opening. The antibody solution should be gently mixed before use. |
| Note                | For laboratory research only, not for drug, diagnostic or other use.  |

### Bioinformation

|                |  |
|----------------|--|
| Gene Symbol    | PTGIS  |
| Gene Full Name | prostaglandin I <sub>2</sub> (prostacyclin) synthase   |
| Background     | This gene encodes a member of the cytochrome P450 superfamily of enzymes. The cytochrome P450 proteins are monooxygenases which catalyze many reactions involved in drug metabolism and synthesis of cholesterol, steroids and other lipids. However, this protein is considered a member of the cytochrome P450 superfamily on the basis of sequence similarity rather than functional similarity. This endoplasmic reticulum membrane protein catalyzes the conversion of prostaglandin H <sub>2</sub> to prostacyclin (prostaglandin I <sub>2</sub> ), a potent vasodilator and inhibitor of platelet aggregation. An imbalance of prostacyclin and its physiological antagonist thromboxane A <sub>2</sub> contribute to the development of myocardial infarction, stroke, and atherosclerosis. [provided by RefSeq, Jul 2008] |
| Function       | Catalyzes the isomerization of prostaglandin H <sub>2</sub> to prostacyclin (= prostaglandin I <sub>2</sub> ). [UniProt]   |
| Calculated Mw  | 57 kDa   |

## Images

---



ARG56504 anti-Prostaglandin I Synthase antibody [isn-1] ICC/IF image

Immunocytochemistry: Bovine CPAE cells stained with ARG56504 anti-Prostaglandin I Synthase antibody [isn-1] (red) at 15 µg/ml dilution.