

ARG56511 anti-Guanylate Cyclase alpha antibody

Package: 250 µl
Store at: -20°C

Summary

Product Description	Rabbit Polyclonal antibody recognizes Guanylate Cyclase alpha
Tested Reactivity	Hu, Ms, Bov
Tested Application	WB
Host	Rabbit
Clonality	Polyclonal
Isotype	IgG
Target Name	Guanylate Cyclase alpha
Species	Human
Immunogen	Synthetic peptide around an internal region of Human Guanylate Cyclase alpha.
Conjugation	Un-conjugated
Alternate Names	Soluble guanylate cyclase large subunit; GC-SA3; MYMY6; GUC1A3; Guanylate cyclase soluble subunit alpha-3; GUCY1A1; GUCA3; GCS-alpha-1; GUCSA3; EC 4.6.1.2; GCS-alpha-3

Application Instructions

Application table	Application	Dilution
	WB	1:200
Application Note	* The dilutions indicate recommended starting dilutions and the optimal dilutions or concentrations should be determined by the scientist.	

Properties

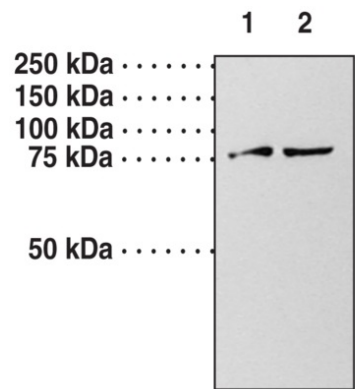
Form	Liquid
Purification	Affinity purification with immunogen.
Buffer	TBS (pH 7.4) and 5 mg/ml BSA.
Stabilizer	5 mg/ml BSA
Storage instruction	For continuous use, store undiluted antibody at 2-8°C for up to a week. For long-term storage, aliquot and store at -20°C or below. Storage in frost free freezers is not recommended. Avoid repeated freeze/thaw cycles. Suggest spin the vial prior to opening. The antibody solution should be gently mixed before use.
Note	For laboratory research only, not for drug, diagnostic or other use.

Bioinformation

Gene Symbol	GUCY1A3
-------------	---------

Gene Full Name	guanylate cyclase 1, soluble, alpha 3
Background	Soluble guanylate cyclases are heterodimeric proteins that catalyze the conversion of GTP to 3',5'-cyclic GMP and pyrophosphate. The protein encoded by this gene is an alpha subunit of this complex and it interacts with a beta subunit to form the guanylate cyclase enzyme, which is activated by nitric oxide. Several transcript variants encoding a few different isoforms have been found for this gene. [provided by RefSeq, Jan 2012]
Calculated Mw	77 kDa

Images



ARG56511 anti-Guanylate Cyclase alpha antibody WB image

Western blot: 1) 40 µg of Mouse lung 10,000 g supernatant, and 2) 70 µg of Mouse lung 10,000 g supernatant stained with ARG56511 anti-Guanylate Cyclase alpha antibody.