

ARG56517 anti-LPAR3 / EDG7 antibody

Package: 250 µl
Store at: -20°C

Summary

| | |
|---------------------|---|
| Product Description | Rabbit Polyclonal antibody recognizes LPAR3 / EDG7 |
| Tested Reactivity | Hu, Ms, Rat |
| Tested Application | ICC/IF, WB |
| Host | Rabbit |
| Clonality | Polyclonal |
| Isotype | IgG |
| Target Name | LPAR3 / EDG7 |
| Species | Mouse |
| Immunogen | Synthetic peptide around the N-terminus of Mouse protein LPAR3 / EDG7. |
| Conjugation | Un-conjugated |
| Alternate Names | LPA3; EDG7; Lysophosphatidic acid receptor Edg-7; LPA receptor 3; Edg-7; GPCR; LP-A3; Lysophosphatidic acid receptor 3; LPA-3; RP4-678I3; HOFNH30 |

Application Instructions

| Application table | Application | Dilution |
|-------------------|--|----------|
| | ICC/IF | 1:80 |
| | WB | 1:200 |
| Application Note | * The dilutions indicate recommended starting dilutions and the optimal dilutions or concentrations should be determined by the scientist. | |

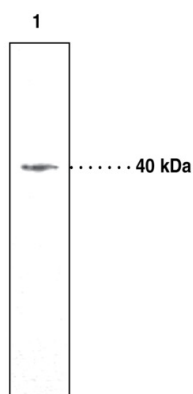
Properties

| | |
|---------------------|---|
| Form | Liquid |
| Purification | Affinity purification with immunogen. |
| Buffer | TBS (pH 7.4), 0.02% Sodium azide, 50% Glycerol and 0.1% BSA. |
| Preservative | 0.02% Sodium azide |
| Stabilizer | 50% Glycerol and 0.1% BSA |
| Storage instruction | For continuous use, store undiluted antibody at 2-8°C for up to a week. For long-term storage, aliquot and store at -20°C. Storage in frost free freezers is not recommended. Avoid repeated freeze/thaw cycles. Suggest spin the vial prior to opening. The antibody solution should be gently mixed before use. |
| Note | For laboratory research only, not for drug, diagnostic or other use. |

Bioinformation

| | |
|----------------|---|
| Database links | GeneID: 23566 Human |
| | GeneID: 65086 Mouse |
| | Swiss-port # Q9EQ31 Mouse |
| | Swiss-port # Q9UBY5 Human |
| Gene Symbol | LPAR3 |
| Gene Full Name | lysophosphatidic acid receptor 3 |
| Background | This gene encodes a member of the G protein-coupled receptor family, as well as the EDG family of proteins. This protein functions as a cellular receptor for lysophosphatidic acid and mediates lysophosphatidic acid-evoked calcium mobilization. This receptor couples predominantly to G(q/11) alpha proteins. [provided by RefSeq, Jul 2008] |
| Function | Receptor for lysophosphatidic acid (LPA), a mediator of diverse cellular activities. May play a role in the development of ovarian cancer. Seems to be coupled to the G(i)/G(o) and G(q) families of heteromeric G proteins. [UniProt] |
| Calculated Mw | 40 kDa |

Images



ARG56517 anti- LPAR3 / EDG7 antibody WB image

Western blot: 1) 30 µg of HepG2 cell lysate stained with ARG56517 anti- LPAR3 / EDG7 antibody.