

## ARG56554 anti-Ribonuclease T2 antibody

Package: 100 µl  
Store at: -20°C

### Summary

Product Description	Rabbit Polyclonal antibody recognizes Ribonuclease T2
Tested Reactivity	Hu
Tested Application	IHC-P, WB
Host	Rabbit
Clonality	Polyclonal
Isotype	IgG
Target Name	Ribonuclease T2
Species	Human
Immunogen	KLH-conjugated synthetic peptide corresponding to aa. 10-36 (N-terminus) of Human Ribonuclease T2.
Conjugation	Un-conjugated
Alternate Names	bA514O12.3; Ribonuclease T2; RNASE6PL; Ribonuclease 6; EC 3.1.27.-

### Application Instructions

Application table	Application	Dilution
	IHC-P	1:50 - 1:100
	WB	1:1000
Application Note	* The dilutions indicate recommended starting dilutions and the optimal dilutions or concentrations should be determined by the scientist.	
Positive Control	293T	

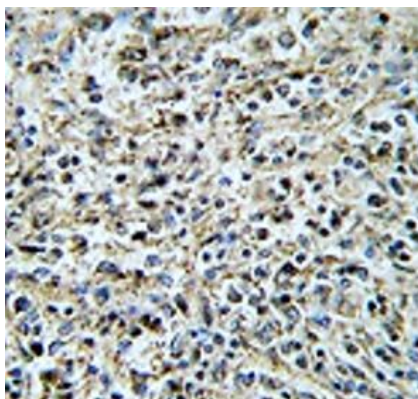
### Properties

Form	Liquid
Purification	Purification with Protein A and immunogen peptide.
Buffer	PBS and 0.09% (W/V) Sodium azide.
Preservative	0.09% (W/V) Sodium azide.
Storage instruction	For continuous use, store undiluted antibody at 2-8°C for up to a week. For long-term storage, aliquot and store at -20°C or below. Storage in frost free freezers is not recommended. Avoid repeated freeze/thaw cycles. Suggest spin the vial prior to opening. The antibody solution should be gently mixed before use.
Note	For laboratory research only, not for drug, diagnostic or other use.

### Bioinformation

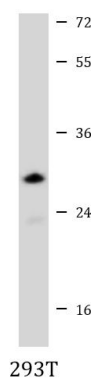
Database links	<a href="#">GeneID: 8635 Human</a> <a href="#">Swiss-port # O00584 Human</a>
Gene Symbol	RNASET2
Gene Full Name	ribonuclease T2
Background	This ribonuclease gene is a novel member of the Rh/T2/S-glycoprotein class of extracellular ribonucleases. It is a single copy gene that maps to 6q27, a region associated with human malignancies and chromosomal rearrangement. [provided by RefSeq, Jul 2008]
Function	Has ribonuclease activity, with higher activity at acidic pH. Probably is involved in lysosomal degradation of ribosomal RNA (By similarity). Probably plays a role in cellular RNA catabolism. [UniProt]
Calculated Mw	29 kDa
Cellular Localization	Secreted. Lysosome lumen. Endoplasmic reticulum lumen. Note=Subcellular fractionation of transfected ovarian cancer cells reveals full-length RNASET2 in the endoplasmic reticulum fraction and the 2 smaller RNASET2 proteolytic products in the lysosome fraction

## Images



ARG56554 anti-Ribonuclease T2 antibody IHC-P image

Immunohistochemistry: Formalin-fixed and paraffin-embedded Human spleen carcinoma tissue stained with ARG56554 anti-Ribonuclease T2 antibody.



ARG56554 anti-Ribonuclease T2 antibody WB image

Western blot: 20 µg of 293T cell lysate stained with ARG56554 anti-Ribonuclease T2 antibody at 1:1000 dilution.