

ARG56589 anti-CXCL10 / IP10 antibody [3.3-1G1-2G7-2F6]

Package: 100 µg, 50 µg
Store at: -20°C

Summary

Product Description	Mouse Monoclonal antibody [3.3-1G1-2G7-2F6] recognizes CXCL10 / IP10
Tested Reactivity	Hu
Tested Application	ELISA, WB
Host	Mouse
Clonality	Monoclonal
Clone	3.3-1G1-2G7-2F6
Target Name	CXCL10 / IP10
Species	Human
Immunogen	E.coli derived Recombinant Human IP10 (CXCL10). (VPLSRTVRCT CISISNQPVN PRSLEKLEII PASQFCPRVE IIATMKKKGE KRCLNPESKA IKNLLKAVSK ERSKRSP)
Conjugation	Un-conjugated
Alternate Names	gIP-10; INP10; 10 kDa interferon gamma-induced protein; IP-10; C-X-C motif chemokine 10; 1-73; Small-inducible cytokine B10; IFI10; Gamma-IP10; SCYB10; crg-2; C7; mob-1

Application Instructions

Application table	Application	Dilution
	ELISA	Sandwich: 1.0 - 2.0 µg/ml with ARG56728 as a detection antibody
	WB	0.25 - 0.50 µg/ml (non - reducing); 1.0 - 2.0 µg/ml (reducing)
Application Note	* The dilutions indicate recommended starting dilutions and the optimal dilutions or concentrations should be determined by the scientist.	

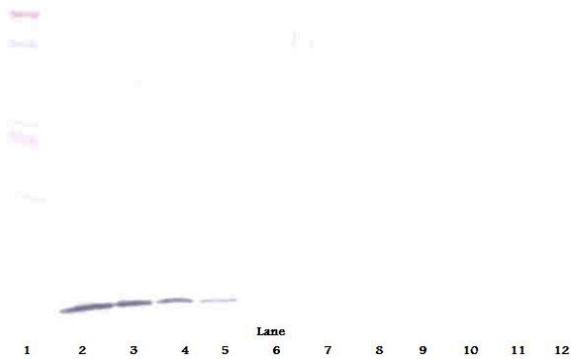
Properties

Form	Liquid
Purification	Purification with Protein A.
Buffer	PBS (pH 7.2)
Concentration	1 mg/ml
Storage instruction	For continuous use, store undiluted antibody at 2-8°C for up to a week. For long-term storage, aliquot and store at -20°C or below. Storage in frost free freezers is not recommended. Avoid repeated freeze/thaw cycles. Suggest spin the vial prior to opening. The antibody solution should be gently mixed before use.
Note	For laboratory research only, not for drug, diagnostic or other use.

Bioinformation

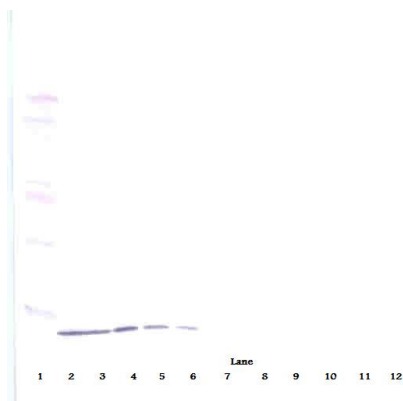
Database links	GeneID: 3627 Human Swiss-port # P02778 Human
Gene Symbol	CXCL10
Gene Full Name	chemokine (C-X-C motif) ligand 10
Background	This antimicrobial gene encodes a chemokine of the CXC subfamily and ligand for the receptor CXCR3. Binding of this protein to CXCR3 results in pleiotropic effects, including stimulation of monocytes, natural killer and T-cell migration, and modulation of adhesion molecule expression. [provided by RefSeq, Sep 2014]
Function	Chemotactic for monocytes and T-lymphocytes. Binds to CXCR3. [UniProt]
Highlight	Related products: CXCL10 antibodies ; CXCL10 ELISA Kits ; CXCL10 recombinant proteins ; Related news: circNDUFB2, a circular RNA (circRNA), activates anti-tumor immunity
Calculated Mw	11 kDa
PTM	CXCL10(1-73) is produced by proteolytic cleavage after secretion from keratinocytes.

Images



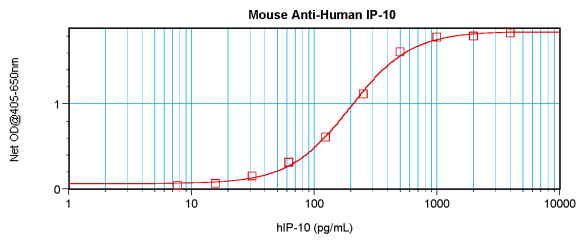
ARG56589 anti-CXCL10 / IP10 antibody [3.3-1G1-2G7-2F6] WB image

Western blot: 250 - 0.24 ng (left to right) of Human IP-10 stained with ARG56589 anti-CXCL10 / IP10 antibody [3.3-1G1-2G7-2F6], under reducing conditions.



ARG56589 anti-CXCL10 / IP10 antibody [3.3-1G1-2G7-2F6] WB image

Western blot: 250 - 0.24 ng (left to right) of Human IP-10 stained with ARG56589 anti-CXCL10 / IP10 antibody [3.3-1G1-2G7-2F6], under non-reducing conditions.



ARG56589 anti-CXCL10 / IP10 antibody [3.3-1G1-2G7-2F6] standard curve image

Sandwich ELISA: ARG56589 anti-CXCL10 / IP10 antibody [3.3-1G1-2G7-2F6] as a capture antibody at 1.0 - 2.0 µg/ml combined with ARG56728 anti-CXCL10 / IP10 antibody (Biotin) as a detection antibody at ~ 0.25 µg/ml. Results of a typical standard run with optical density.