

ARG56610 anti-IL4 antibody

Package: 50 µg
Store at: -20°C

Summary

Product Description	Rabbit Polyclonal antibody recognizes IL4
Tested Reactivity	Hu
Tested Application	ELISA, IHC-P, Neut, WB
Host	Rabbit
Clonality	Polyclonal
Isotype	IgG
Target Name	IL4
Species	Human
Immunogen	E.coli derived Recombinant Human IL-4. (MHKCDITLQE IIKTLNSLTE QKTLCTELTV TDIFAASKNT TEKETFCAA TVLRFYSHH EKDTRCLGAT AQQFHRHKQL IRFLKRLDRN LWGLAGLNSC PVKEANQSTL ENFLERLKI MREKYSKCSS)
Conjugation	Un-conjugated
Alternate Names	BSF-1; IL-4; B-cell stimulatory factor 1; BCGF1; Lymphocyte stimulatory factor 1; BCGF-1; Interleukin-4; Pitracinra; Binetrakin; BSF1

Application Instructions

Application table	Application	Dilution
	ELISA	Sandwich: 0.5 - 2.0 µg/ml with ARG56724 as a detection antibody
	IHC-P	0.25 µg/ml
	Neut	0.03 - 0.05 µg/ml (To yield [ND50] of the biological activity of hIL - 4 (1.50 ng/ml))
	WB	0.1 - 0.2 µg/ml
Application Note	* The dilutions indicate recommended starting dilutions and the optimal dilutions or concentrations should be determined by the scientist.	

Properties

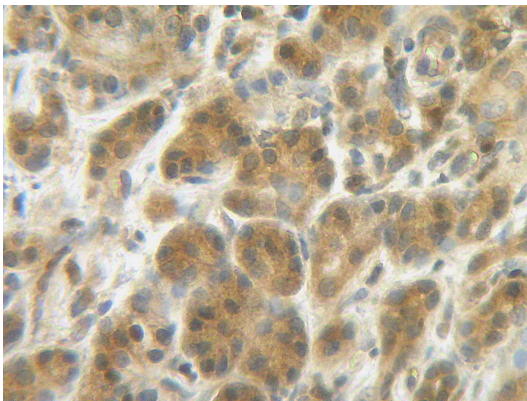
Form	Liquid
Purification	Affinity purification with immunogen.
Buffer	PBS (pH 7.2)
Concentration	1 mg/ml
Storage instruction	For continuous use, store undiluted antibody at 2-8°C for up to a week. For long-term storage, aliquot and store at -20°C or below. Storage in frost free freezers is not recommended. Avoid repeated freeze/thaw cycles. Suggest spin the vial prior to opening. The antibody solution should be gently mixed before use.

Note For laboratory research only, not for drug, diagnostic or other use.

Bioinformation

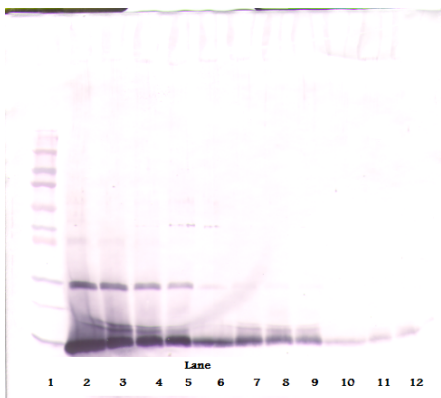
Database links	GeneID: 3565 Human Swiss-port # P05112 Human
Gene Symbol	IL4
Gene Full Name	interleukin 4
Background	The protein encoded by this gene is a pleiotropic cytokine produced by activated T cells. This cytokine is a ligand for interleukin 4 receptor. The interleukin 4 receptor also binds to IL13, which may contribute to many overlapping functions of this cytokine and IL13. STAT6, a signal transducer and activator of transcription, has been shown to play a central role in mediating the immune regulatory signal of this cytokine. This gene, IL3, IL5, IL13, and CSF2 form a cytokine gene cluster on chromosome 5q, with this gene particularly close to IL13. This gene, IL13 and IL5 are found to be regulated coordinately by several long-range regulatory elements in an over 120 kilobase range on the chromosome. Two alternatively spliced transcript variants of this gene encoding distinct isoforms have been reported. [provided by RefSeq, Jul 2008]
Function	Participates in at least several B-cell activation processes as well as of other cell types. It is a costimulator of DNA-synthesis. It induces the expression of class II MHC molecules on resting B-cells. It enhances both secretion and cell surface expression of IgE and IgG1. It also regulates the expression of the low affinity Fc receptor for IgE (CD23) on both lymphocytes and monocytes. [UniProt]
Calculated Mw	17 kDa

Images



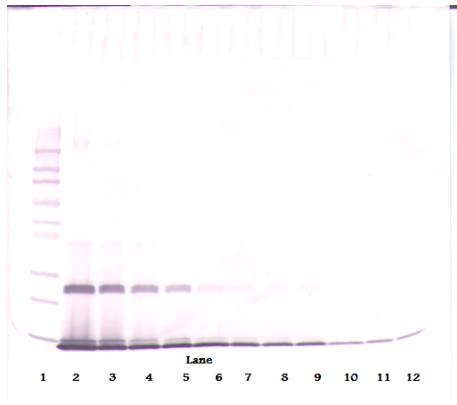
ARG56610 anti-IL4 antibody IHC-P image

Immunohistochemistry: Formalin-fixed and paraffin-embedded sections of Human breast invasive ductal carcinoma. The recommended ARG56610 anti-IL4 antibody concentration is 0.25 $\mu\text{g}/\text{mL}$ with an overnight incubation at 4°C. An HRP-labeled polymer detection system was used with a DAB chromogen. Antigen Retrieval: Boil tissue section in Sodium Citrate buffer (pH 6.0) followed by cooling at RT for 20 min. Additional protein blocks were used in conjunction with the secondary reagents.



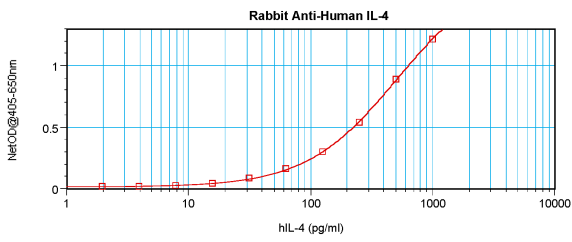
ARG56610 anti-IL4 antibody WB image

Western blot: 250 - 0.24 ng of Human IL-4 stained with ARG56610 anti-IL4 antibody, under reducing conditions.



ARG56610 anti-IL4 antibody WB image

Western blot: 250 - 0.24 ng of Human IL-4 stained with ARG56610 anti-IL4 antibody, under non-reducing conditions.



ARG56610 anti-IL4 antibody standard curve image

Sandwich ELISA: ARG56610 anti-IL4 antibody as a capture antibody at 0.5 - 2.0 µg/ml combined with ARG56724 anti-IL4 antibody (Biotin) as a detection antibody. Results of a typical standard run with optical density.