

ARG56614 anti-CXCL10 / IP10 antibody

Package: 50 µg
Store at: -20°C

Summary

Product Description	Rabbit Polyclonal antibody recognizes CXCL10 / IP10
Tested Reactivity	Hu, Ms
Tested Application	ELISA, IHC-P, Neut, WB
Host	Rabbit
Clonality	Polyclonal
Isotype	IgG
Target Name	CXCL10 / IP10
Species	Human
Immunogen	E.coli derived Recombinant Human IP-10 (CXCL10). (VPLSRTVRCT CISISNPVN PRSLEKLEII PASQFCPRVE IIATMKKKGE KRCLNPESKA IKNLLKAVSK ERSKRSP)
Conjugation	Un-conjugated
Alternate Names	gIP-10; INP10; 10 kDa interferon gamma-induced protein; IP-10; C-X-C motif chemokine 10; 1-73; Small-inducible cytokine B10; IFI10; Gamma-IP10; SCYB10; crg-2; C7; mob-1

Application Instructions

Application table	Application	Dilution
	ELISA	Sandwich: 0.5 - 2.0 µg/ml with ARG56728 as a detection antibody
	IHC-P	1.0 µg/ml
	Neut	5.0 - 8.0 µg/ml (To yield [ND50] of the biological activity of Human IP - 10 (100.0 ng/ml))
	WB	0.1 - 0.2 µg/ml
Application Note	* The dilutions indicate recommended starting dilutions and the optimal dilutions or concentrations should be determined by the scientist.	

Properties

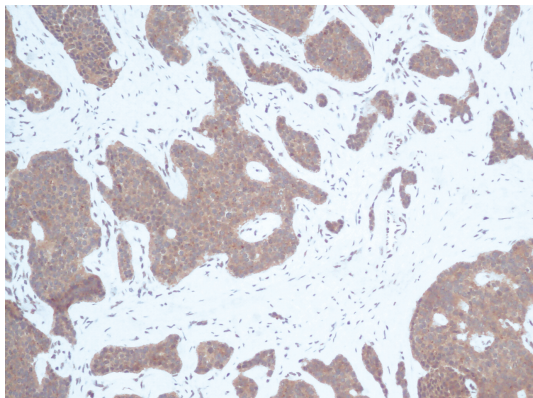
Form	Liquid
Purification	Affinity purification with immunogen.
Buffer	PBS (pH 7.2)
Concentration	1 mg/ml
Storage instruction	For continuous use, store undiluted antibody at 2-8°C for up to a week. For long-term storage, aliquot and store at -20°C or below. Storage in frost free freezers is not recommended. Avoid repeated freeze/thaw cycles. Suggest spin the vial prior to opening. The antibody solution should be gently mixed before use.

Note For laboratory research only, not for drug, diagnostic or other use.

Bioinformation

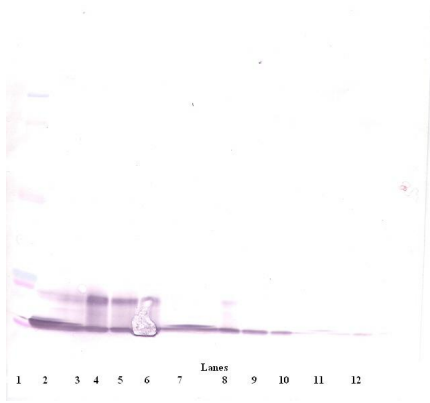
Database links	GeneID: 15945 Mouse GeneID: 3627 Human Swiss-port # P02778 Human Swiss-port # P17515 Mouse
Gene Symbol	CXCL10
Gene Full Name	chemokine (C-X-C motif) ligand 10
Background	This antimicrobial gene encodes a chemokine of the CXC subfamily and ligand for the receptor CXCR3. Binding of this protein to CXCR3 results in pleiotropic effects, including stimulation of monocytes, natural killer and T-cell migration, and modulation of adhesion molecule expression. [provided by RefSeq, Sep 2014]
Function	Chemotactic for monocytes and T-lymphocytes. Binds to CXCR3. [UniProt]
Highlight	Related products: CXCL10 antibodies ; CXCL10 ELISA Kits ; CXCL10 recombinant proteins ; Anti-Rabbit IgG secondary antibodies ; Related news: circNDUFB2, a circular RNA (circRNA), activates anti-tumor immunity
Calculated Mw	11 kDa
PTM	CXCL10(1-73) is produced by proteolytic cleavage after secretion from keratinocytes.

Images



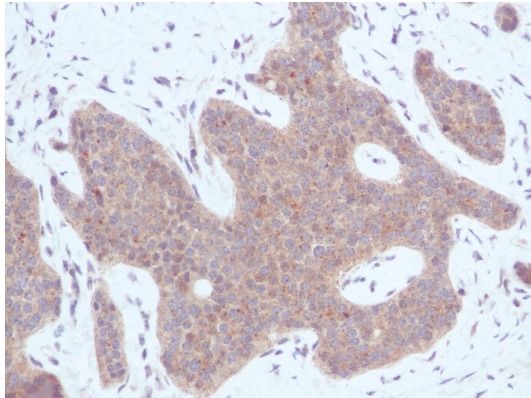
ARG56614 anti-CXCL10 / IP10 antibody IHC-P image

Immunohistochemistry: Formalin-fixed and paraffin-embedded sections of Human carcinoid tissue. The recommended ARG56614 anti-CXCL10 / IP10 antibody concentration is 1.0 µg/ml with an overnight incubation at 4°C. An HRP-labeled polymer detection system was used with a DAB chromogen. Antigen Retrieval: Boil tissue section in Sodium Citrate buffer (pH 6.0) followed by cooling at RT for 20 min.



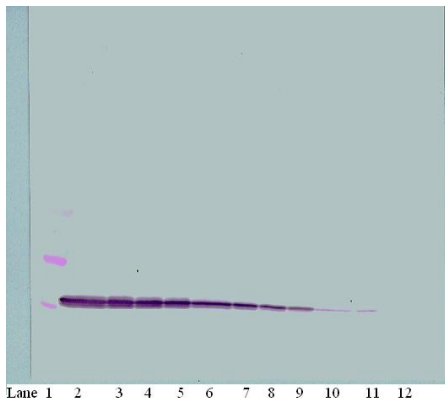
ARG56614 anti-CXCL10 / IP10 antibody WB image

Western blot: 1.5 - 3.0 ng of Human IP-10 stained with ARG56614 anti-CXCL10 / IP10 antibody, under reducing conditions.



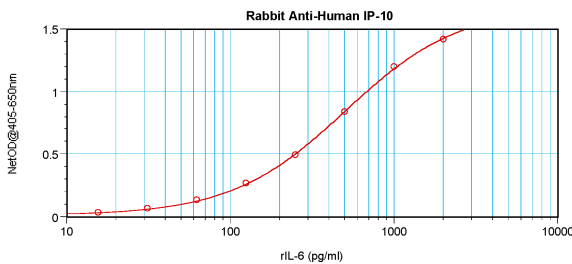
ARG56614 anti-CXCL10 / IP10 antibody IHC-P image

Immunohistochemistry: Formalin-fixed and paraffin-embedded sections of Human carcinoid tissue. The recommended ARG56614 anti-CXCL10 / IP10 antibody concentration is 1.0 µg/ml with an overnight incubation at 4°C. An HRP-labeled polymer detection system was used with a DAB chromogen. Antigen Retrieval: Boil tissue section in Sodium Citrate buffer (pH 6.0) followed by cooling at RT for 20 min.



ARG56614 anti-CXCL10 / IP10 antibody WB image

Western blot: 1.5 - 3.0 ng of Human IP-10 stained with ARG56614 anti-CXCL10 / IP10 antibody, under non-reducing conditions.



ARG56614 anti-CXCL10 / IP10 antibody standard curve image

Sandwich ELISA: ARG56614 anti-CXCL10 / IP10 antibody as a capture antibody at 0.5 - 2.0 µg/ml combined with ARG56728 anti-CXCL10 / IP10 antibody (Biotin) as a detection antibody. Results of a typical standard run with optical density.