

**ARG56616**  
anti-CXCL10 / IP10 antibodyPackage: 50 µg  
Store at: -20°C

### Summary

Product Description	Rabbit Polyclonal antibody recognizes CXCL10 / IP10
Tested Reactivity	Rat
Tested Application	ELISA, IHC-Fr, Neut, WB
Host	Rabbit
Clonality	Polyclonal
Isotype	IgG
Target Name	CXCL10 / IP10
Species	Rat
Immunogen	E.coli derived Recombinant Rat IP-10 (CXCL10). (IPLARTVRCT CIDFHEQPLR PRAIGKLEII PASLSCPHVE IIATMKKNNE KRCLNPESEA IKSLKAVSQ RRSKRAP)
Conjugation	Un-conjugated
Alternate Names	gIP-10; INP10; 10 kDa interferon gamma-induced protein; IP-10; C-X-C motif chemokine 10; 1-73; Small-inducible cytokine B10; IFI10; Gamma-IP10; SCYB10; crg-2; C7; mob-1

### Application Instructions

Application table	Application	Dilution
	ELISA	Sandwich: 0.5 - 2.0 µg/ml with ARG56730 as a detection antibody
	IHC-Fr	0.25 µg/ml
	Neut	5.0 - 10.0 µg/ml (To yield [ND50] of the biological activity of Rat IP - 10 (100 ng/ml) )
	WB	0.1 - 0.2 µg/ml

**Application Note** \* The dilutions indicate recommended starting dilutions and the optimal dilutions or concentrations should be determined by the scientist.

### Properties

Form	Liquid
Purification	Affinity purification with immunogen.
Buffer	PBS (pH 7.2)
Concentration	1 mg/ml
Storage instruction	For continuous use, store undiluted antibody at 2-8°C for up to a week. For long-term storage, aliquot and store at -20°C or below. Storage in frost free freezers is not recommended. Avoid repeated freeze/thaw cycles. Suggest spin the vial prior to opening. The antibody solution should be gently mixed before use.

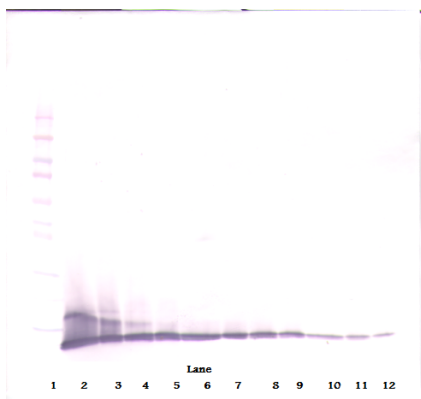
Note

For laboratory research only, not for drug, diagnostic or other use.

## Bioinformation

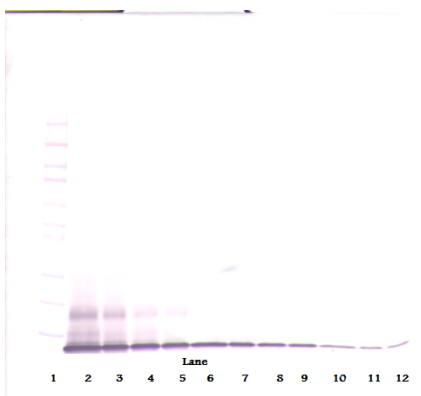
Database links	<a href="#">GeneID: 245920 Rat</a> <a href="#">Swiss-port # P48973 Rat</a>
Gene Symbol	Cxcl10
Gene Full Name	chemokine (C-X-C motif) ligand 10
Background	This antimicrobial gene encodes a chemokine of the CXC subfamily and ligand for the receptor CXCR3. Binding of this protein to CXCR3 results in pleiotropic effects, including stimulation of monocytes, natural killer and T-cell migration, and modulation of adhesion molecule expression. [provided by RefSeq, Sep 2014]
Function	Chemotactic for monocytes and T-lymphocytes. Binds to CXCR3. [UniProt]
Highlight	Related products: <a href="#">CXCL10 antibodies</a> ; <a href="#">CXCL10 ELISA Kits</a> ; <a href="#">CXCL10 recombinant proteins</a> ; <a href="#">Anti-Rabbit IgG secondary antibodies</a> ; Related news: <a href="#">circNDUFB2, a circular RNA (circRNA), activates anti-tumor immunity</a>
Calculated Mw	11 kDa
PTM	CXCL10(1-73) is produced by proteolytic cleavage after secretion from keratinocytes.

## Images



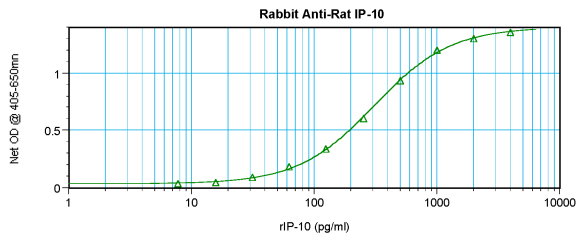
ARG56616 anti-CXCL10 / IP10 antibody WB image

Western blot: 250 - 0.24 ng of Rat IP-10 stained with ARG56616 anti-CXCL10 / IP10 antibody, under reducing conditions.



ARG56616 anti-CXCL10 / IP10 antibody WB image

Western blot: 250 - 0.24 ng of Rat IP-10 stained with ARG56616 anti-CXCL10 / IP10 antibody, under non-reducing conditions.



### ARG56616 anti-CXCL10 / IP10 antibody standard curve image

Sandwich ELISA: ARG56616 anti-CXCL10 / IP10 antibody as a capture antibody at 0.5 - 2.0  $\mu\text{g}/\text{ml}$  combined with ARG56730 anti-CXCL10 / IP10 antibody (Biotin) as a detection antibody. Results of a typical standard run with optical density.