

ARG56627 anti-IL6 antibody

Package: 50 µg
Store at: -20°C

Summary

Product Description	Goat Polyclonal antibody recognizes IL6
Tested Reactivity	Hu
Tested Application	ELISA, IHC-P, Neut, WB
Host	Goat
Clonality	Polyclonal
Isotype	IgG
Target Name	IL6
Species	Human
Immunogen	E.coli derived Recombinant Human IL-6. (PVPPGEDSKD VAAPHRQPLT SSERIDKQIR YILDGISALR KETCNKSNMC ESSKEALAEN NLNLPKMAEK DGCFSQSGFNE ETCLVKIITG LLEFEVYLEY LQNRFESEEE QARAVQMSTK VLIQFLQKKA KNLDAITTPD PTTNASLLTK LQAQNQWLQD MTTHLILRSF KEFLQSSLRA LRQM)
Conjugation	Un-conjugated
Alternate Names	B-cell stimulatory factor 2; CDF; HSF; BSF-2; Interferon beta-2; IL-6; IFNB2; CTL differentiation factor; Interleukin-6; HGF; Hybridoma growth factor; BSF2; IFN-beta-2

Application Instructions

Application table	Application	Dilution
	ELISA	Capture: 0.5 - 2 µg/ml; Detection: 0.1 - 0.2 µg/ml
	IHC-P	0.25 µg/ml
	Neut	0.05 - 0.08 µg/ml (To yield [ND50] of the biological activity of Human IL - 6 (5 ng/ml))
	WB	0.1 - 0.2 µg/ml
Application Note	Sandwich ELISA (Capture antibody - Detection antibody): ARG56591 (1 - 2 µg/ml) - ARG56627 (0.1 - 0.2 µg/ml) ARG56627 (0.5 - 2 µg/ml) - ARG56736 (0.25 - 1 µg/ml) * The dilutions indicate recommended starting dilutions and the optimal dilutions or concentrations should be determined by the scientist.	

Properties

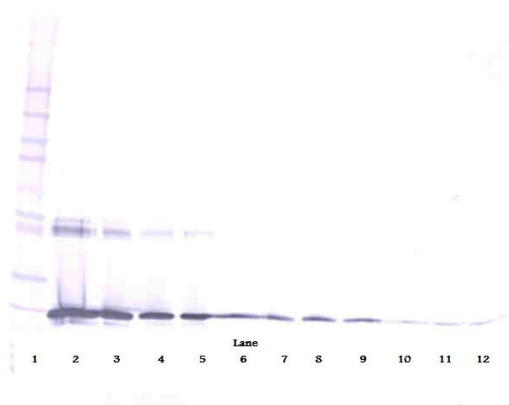
Form	Liquid
Purification	Affinity purification with immunogen.
Buffer	PBS (pH 7.2)

Concentration	1 mg/ml
Storage instruction	For continuous use, store undiluted antibody at 2-8°C for up to a week. For long-term storage, aliquot and store at -20°C or below. Storage in frost free freezers is not recommended. Avoid repeated freeze/thaw cycles. Suggest spin the vial prior to opening. The antibody solution should be gently mixed before use.
Note	For laboratory research only, not for drug, diagnostic or other use.

Bioinformation

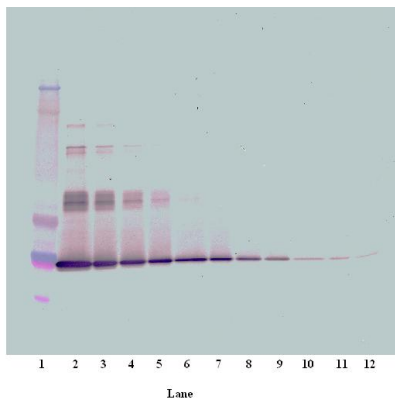
Database links	GeneID: 3569 Human Swiss-port # P05231 Human
Gene Symbol	IL6
Gene Full Name	interleukin 6
Background	This gene encodes a cytokine that functions in inflammation and the maturation of B cells. In addition, the encoded protein has been shown to be an endogenous pyrogen capable of inducing fever in people with autoimmune diseases or infections. The protein is primarily produced at sites of acute and chronic inflammation, where it is secreted into the serum and induces a transcriptional inflammatory response through interleukin 6 receptor, alpha. The functioning of this gene is implicated in a wide variety of inflammation-associated disease states, including susceptibility to diabetes mellitus and systemic juvenile rheumatoid arthritis. [provided by RefSeq, Jun 2011]
Function	Cytokine with a wide variety of biological functions. It is a potent inducer of the acute phase response. Plays an essential role in the final differentiation of B-cells into Ig-secreting cells Involved in lymphocyte and monocyte differentiation. Acts on B-cells, T-cells, hepatocytes, hematopoietic progenitor cells and cells of the CNS. Required for the generation of T(H)17 cells. Also acts as a myokine. It is discharged into the bloodstream after muscle contraction and acts to increase the breakdown of fats and to improve insulin resistance. It induces myeloma and plasmacytoma growth and induces nerve cells differentiation. [UniProt]
Highlight	Related products: IL6 antibodies ; IL6 ELISA Kits ; IL6 recombinant proteins ; Anti-Goat IgG secondary antibodies ; Related news: HMGB1 in inflammation Inflammatory Cytokines
Calculated Mw	24 kDa
PTM	N- and O-glycosylated.

Images



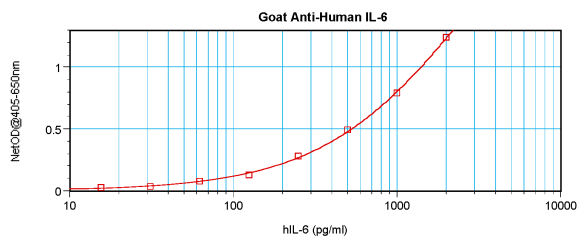
ARG56627 anti-IL6 antibody WB image

Western blot: 250 - 0.24 ng of Human IL-6 stained with ARG56627 anti-IL6 antibody, under reducing conditions.



ARG56627 anti-IL6 antibody WB image

Western blot: 250 - 0.24 ng of Human IL-6 stained with ARG56627 anti-IL6 antibody, under non-reducing conditions.



ARG56627 anti-IL6 antibody standard curve image

Sandwich ELISA: ARG56627 anti-IL6 antibody as a capture antibody at 0.5 - 2 µg/ml dilution combined with [ARG56736](#) anti-IL6 antibody (Biotin) as a detection antibody at 0.25 - 1.0 µg/ml dilution. Results of a typical standard run with optical density.