

## ARG56636 anti-CXCL1 / GRO alpha antibody

Package: 50 µg  
Store at: -20°C

### Summary

Product Description	Rabbit Polyclonal antibody recognizes CXCL1 / GRO alpha
Tested Reactivity	Ms
Tested Application	ELISA, WB
Host	Rabbit
Clonality	Polyclonal
Isotype	IgG
Target Name	CXCL1 / GRO alpha
Species	Mouse
Immunogen	E.coli derived Recombinant Mouse CXCL1. (APIANELRCQ CLQTMAGIHL KNIQSLKVLV SGPHTCTQTEV IATLKNRGREA CLDPEAPLVQ KIVQKMLKGV PK)
Conjugation	Un-conjugated
Alternate Names	Growth-regulated alpha protein; SCYB1; Melanoma growth stimulatory activity; MGSA-a; GRO-alpha; GROa; NAP-3; FSP; C-X-C motif chemokine 1; Neutrophil-activating protein 3; GRO1; MGSA; IL-8 homologues (murine)

### Application Instructions

Application table	Application	Dilution
	ELISA	Sandwich: 0.5 - 2.0 µg/ml with ARG56746 as a detection antibody
	WB	0.1 - 0.2 µg/ml
Application Note	* The dilutions indicate recommended starting dilutions and the optimal dilutions or concentrations should be determined by the scientist.	

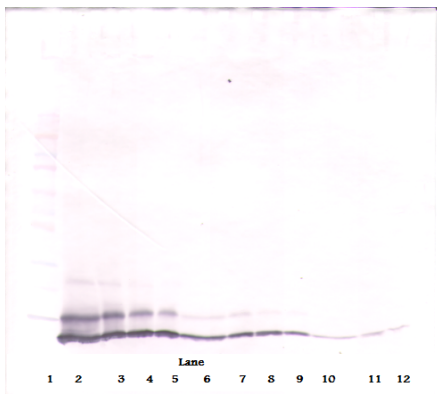
### Properties

Form	Liquid
Purification	Affinity purification with immunogen.
Buffer	PBS (pH 7.2)
Concentration	1 mg/ml
Storage instruction	For continuous use, store undiluted antibody at 2-8°C for up to a week. For long-term storage, aliquot and store at -20°C or below. Storage in frost free freezers is not recommended. Avoid repeated freeze/thaw cycles. Suggest spin the vial prior to opening. The antibody solution should be gently mixed before use.
Note	For laboratory research only, not for drug, diagnostic or other use.

## Bioinformation

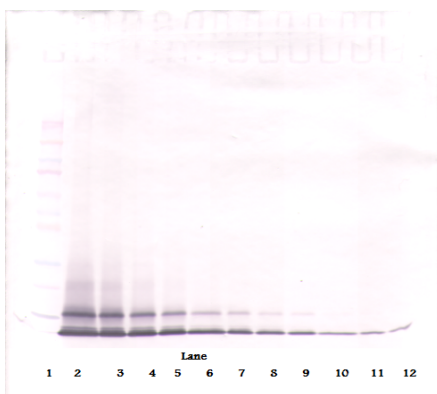
Database links	<a href="#">GeneID: 12310 Mouse</a> <a href="#">Swiss-port # Q99JA0 Mouse</a>
Gene Symbol	CXCL1
Gene Full Name	C-X-C motif chemokine ligand 1
Background	This antimicrobial gene encodes a member of the CXC subfamily of chemokines. The encoded protein is a secreted growth factor that signals through the G-protein coupled receptor, CXC receptor 2. This protein plays a role in inflammation and as a chemoattractant for neutrophils. Aberrant expression of this protein is associated with the growth and progression of certain tumors. A naturally occurring processed form of this protein has increased chemotactic activity. Alternate splicing results in coding and non-coding variants of this gene. A pseudogene of this gene is found on chromosome 4. [provided by RefSeq, Sep 2014]
Function	Has chemotactic activity for neutrophils. May play a role in inflammation and exerts its effects on endothelial cells in an autocrine fashion. In vitro, the processed forms GRO-alpha(4-73), GRO-alpha(5-73) and GRO-alpha(6-73) show a 30-fold higher chemotactic activity. [UniProt]
Calculated Mw	11 kDa
PTM	N-terminal processed forms GRO-alpha(4-73), GRO-alpha(5-73) and GRO-alpha(6-73) are produced by proteolytic cleavage after secretion from peripheral blood monocytes. [UniProt]

## Images



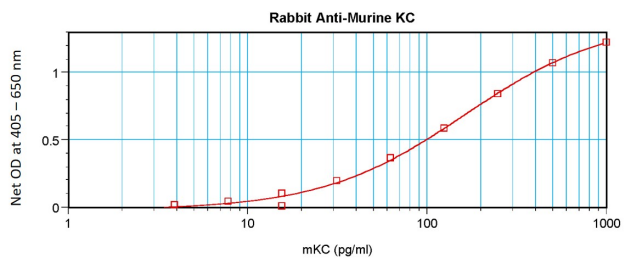
ARG56636 anti-CXCL1 / GRO alpha antibody WB image

Western blot: 250 - 0.24 ng of Mouse CXCL1 stained with ARG56636 anti-CXCL1 / GRO alpha antibody, under reducing conditions.



ARG56636 anti-CXCL1 / GRO alpha antibody WB image

Western blot: 250 - 0.24 ng of Mouse CXCL1 stained with ARG56636 anti-CXCL1 / GRO alpha antibody, under non-reducing conditions.



#### ARG56636 anti-CXCL1 / GRO alpha antibody standard curve image

Sandwich ELISA: ARG56636 anti-CXCL1 / GRO alpha antibody as a capture antibody at 0.5 - 2.0  $\mu\text{g}/\text{ml}$  combined with ARG56746 anti-CXCL1 (GRO alpha) antibody (Biotin) as a detection antibody. Results of a typical standard run with optical density.