

## ARG56644 anti-IL1 beta antibody

Package: 50 µg  
Store at: -20°C

### Summary

Product Description	Rabbit Polyclonal antibody recognizes IL1 beta
Tested Reactivity	Ms, Rat
Tested Application	ELISA, ICC/IF, IHC-FoFr , IHC-Fr, IHC-P, Neut, WB
Host	Rabbit
Clonality	Polyclonal
Isotype	IgG
Target Name	IL1 beta
Species	Mouse
Immunogen	E.coli derived Recombinant Mouse IL-1β. (MVPIRQLHYR LRDEQQKSLV LSDPYELKAL HLNQINQV VIFSMSFVQG EPSNDKIPVA LGLKGNLYL SCVMKDGTPPT LQLESVDPKQ YPKKKMEKRF VFNKIEVKSK VEFESAEPN WYISTSQAEH KPVLGNNSG QDIIDFTMES VSS)
Conjugation	Un-conjugated
Alternate Names	Interleukin-1 beta; IL1-BETA; IL-1; IL-1 beta; Catabolin; IL1F2

### Application Instructions

Application table	Application	Dilution
	ELISA	Sandwich: 0.5 - 2.0 µg/ml with ARG56754 as a detection antibody
	ICC/IF	Assay dependent
	IHC-FoFr	Assay dependent
	IHC-Fr	0.5 µg/ml
	IHC-P	Assay dependent
	Neut	0.57 - 0.86 µg/ml (To yield [ND50] of the biological activity of mL - 1β (10 pg/ml) )
	WB	0.1 - 0.2 µg/ml

**Application Note** \* The dilutions indicate recommended starting dilutions and the optimal dilutions or concentrations should be determined by the scientist.

### Properties

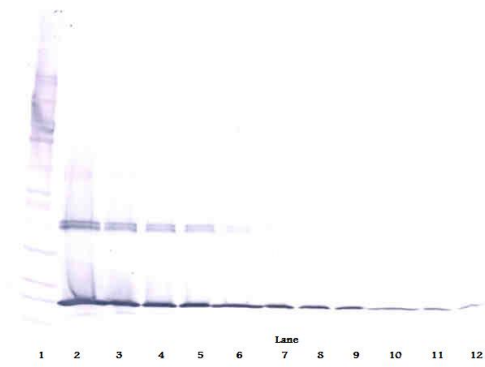
Form	Liquid
Purification	Affinity purification with immunogen.
Buffer	PBS (pH 7.2)

Concentration	1 mg/ml
Storage instruction	For continuous use, store undiluted antibody at 2-8°C for up to a week. For long-term storage, aliquot and store at -20°C or below. Storage in frost free freezers is not recommended. Avoid repeated freeze/thaw cycles. Suggest spin the vial prior to opening. The antibody solution should be gently mixed before use.
Note	For laboratory research only, not for drug, diagnostic or other use.

## Bioinformation

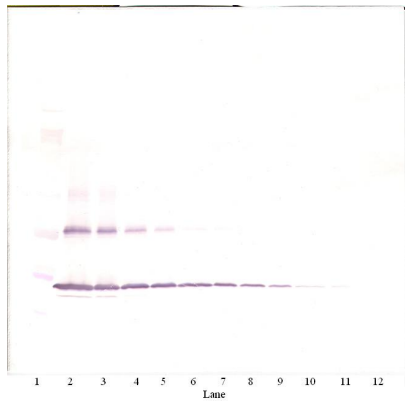
---

Database links	<a href="#">GeneID: 16176 Mouse</a> <a href="#">Swiss-port # P10749 Mouse</a>
Gene Symbol	IL1b
Gene Full Name	interleukin 1 beta
Background	IL1 beta protein is a member of the interleukin 1 cytokine family. This cytokine is produced by activated macrophages as a proprotein, which is proteolytically processed to its active form by caspase 1 (CASP1/ICE). This cytokine is an important mediator of the inflammatory response, and is involved in a variety of cellular activities, including cell proliferation, differentiation, and apoptosis. The induction of cyclooxygenase-2 (PTGS2/COX2) by this cytokine in the central nervous system (CNS) is found to contribute to inflammatory pain hypersensitivity. This gene and eight other interleukin 1 family genes form a cytokine gene cluster on chromosome 2. [provided by RefSeq, Jul 2008]
Function	IL1 beta is a potent proinflammatory cytokine. Initially discovered as the major endogenous pyrogen, induces prostaglandin synthesis, neutrophil influx and activation, T-cell activation and cytokine production, B-cell activation and antibody production, and fibroblast proliferation and collagen production. Promotes Th17 differentiation of T-cells. Synergizes with IL12/interleukin-12 to induce IFNG synthesis from T-helper 1 (Th1) cells (PubMed:10653850). [UniProt]
Highlight	<p>Related products:  <a href="#">IL1 beta antibodies</a>; <a href="#">IL1 beta ELISA Kits</a>; <a href="#">IL1 beta Duos / Panels</a>; <a href="#">IL1 beta recombinant proteins</a>; <a href="#">Anti-Rabbit IgG secondary antibodies</a>;</p> <p>Related news:  <a href="#">HMGB1 in inflammation</a>  <a href="#">Inflammatory Cytokines</a>  <a href="#">Exploring Antiviral Immune Response</a>  <a href="#">RIP1 activation and pathogenesis of NASH</a></p>
Research Area	Pyroptosis Study antibody
Calculated Mw	31 kDa
PTM	Activation of the IL1B precursor involves a CASP1-catalyzed proteolytic cleavage. Processing and secretion are temporarily associated.



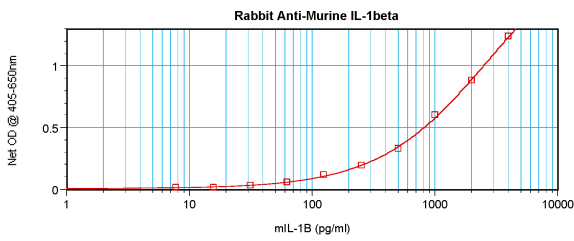
ARG56644 anti-IL1 beta antibody WB image

Western blot: 250 - 0.24 ng of Mouse IL-1 $\beta$  stained with ARG56644 anti-IL1 beta antibody, under reducing conditions.



ARG56644 anti-IL1 beta antibody WB image

Western blot: 250 - 0.24 ng of Mouse IL-1 $\beta$  stained with ARG56644 anti-IL1 beta antibody, under non-reducing conditions.



ARG56644 anti-IL1 beta antibody standard curve image

Sandwich ELISA: ARG56644 anti-IL1 beta antibody as a capture antibody at 0.5 - 2.0  $\mu$ g/ml combined with ARG56754 anti-IL1 beta antibody (Biotin) as a detection antibody. Results of a typical standard run with optical density.