

ARG56645 anti-IL1 beta antibody

Package: 50 µg
Store at: -20°C

Summary

Product Description	Goat Polyclonal antibody recognizes IL1 beta
Tested Reactivity	Hu, Rat
Tested Application	ELISA, Neut, WB
Host	Goat
Clonality	Polyclonal
Isotype	IgG
Target Name	IL1 beta
Species	Human
Immunogen	E.coli derived Recombinant Human IL-1β. (APVRSLNCTL RDSQQKSLVM SGPYELKALH LQGQDMEQQV VFSMSFVQGE ESNDKIPVAL GLKEKNLYLS CVLKDDKPTL QLESVDPKNY PKKKMEKRFV FNKIEINNKL EFESAQFPNW YISTSQAENM PVFLGGTKGG QDITDFTMQF VSS)
Conjugation	Un-conjugated
Alternate Names	Interleukin-1 beta; IL1-BETA; IL-1; IL-1 beta; Catabolin; IL1F2

Application Instructions

Application table	Application	Dilution
	ELISA	Sandwich: 0.5 - 2.0 µg/ml with ARG56755 as a detection antibody
	Neut	0.45 - 0.65 µg/ml (To yield [ND50] of the biological activity of hIL - 1β (5pg/ml))
	WB	0.1 - 0.2 µg/ml
Application Note	* The dilutions indicate recommended starting dilutions and the optimal dilutions or concentrations should be determined by the scientist.	

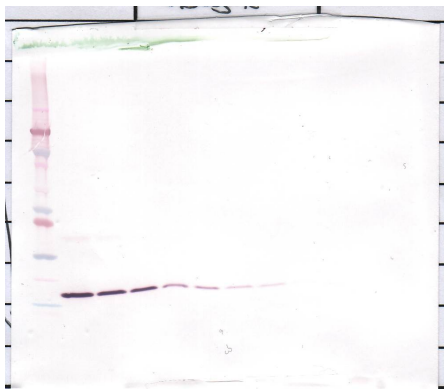
Properties

Form	Liquid
Purification	Affinity purification with immunogen.
Buffer	PBS (pH 7.2)
Concentration	1 mg/ml
Storage instruction	For continuous use, store undiluted antibody at 2-8°C for up to a week. For long-term storage, aliquot and store at -20°C or below. Storage in frost free freezers is not recommended. Avoid repeated freeze/thaw cycles. Suggest spin the vial prior to opening. The antibody solution should be gently mixed before use.
Note	For laboratory research only, not for drug, diagnostic or other use.

Bioinformation

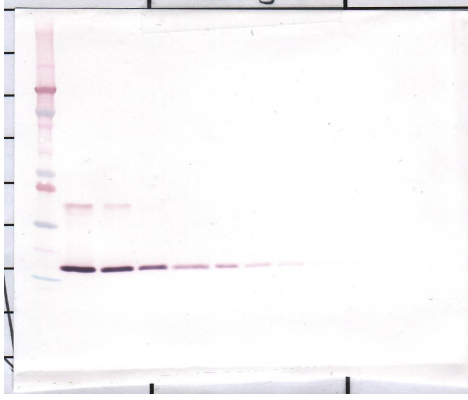
Database links	GeneID: 3553 Human Swiss-port # P01584 Human
Gene Symbol	IL1B
Gene Full Name	interleukin 1, beta
Background	IL1 beta protein is a member of the interleukin 1 cytokine family. This cytokine is produced by activated macrophages as a proprotein, which is proteolytically processed to its active form by caspase 1 (CASP1/ICE). This cytokine is an important mediator of the inflammatory response, and is involved in a variety of cellular activities, including cell proliferation, differentiation, and apoptosis. The induction of cyclooxygenase-2 (PTGS2/COX2) by this cytokine in the central nervous system (CNS) is found to contribute to inflammatory pain hypersensitivity. This gene and eight other interleukin 1 family genes form a cytokine gene cluster on chromosome 2. [provided by RefSeq, Jul 2008]
Function	IL1 beta is a potent proinflammatory cytokine. Initially discovered as the major endogenous pyrogen, induces prostaglandin synthesis, neutrophil influx and activation, T-cell activation and cytokine production, B-cell activation and antibody production, and fibroblast proliferation and collagen production. Promotes Th17 differentiation of T-cells. Synergizes with IL12/interleukin-12 to induce IFNG synthesis from T-helper 1 (Th1) cells (PubMed:10653850). [UniProt]
Highlight	Related products: IL1 beta antibodies ; IL1 beta ELISA Kits ; IL1 beta Duos / Panels ; IL1 beta recombinant proteins ; Anti-Goat IgG secondary antibodies ; Related news: HMGB1 in inflammation Inflammatory Cytokines Exploring Antiviral Immune Response RIP1 activation and pathogenesis of NASH
Research Area	Pyroptosis Study antibody
Calculated Mw	31 kDa
PTM	Activation of the IL1B precursor involves a CASP1-catalyzed proteolytic cleavage. Processing and secretion are temporarily associated.

Images



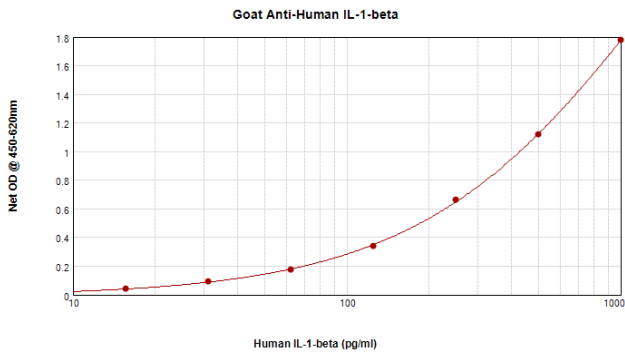
ARG56645 anti-IL1 beta antibody WB image

Western blot: 250 - 0.24 ng of Human IL-1 β stained with ARG56645 anti-IL1 beta antibody, under reducing conditions.



ARG56645 anti-IL1 beta antibody WB image

Western blot: 250 - 0.24 ng of Human IL-1 β stained with ARG56645 anti-IL1 beta antibody, under non-reducing conditions.



ARG56645 anti-IL1 beta antibody standard curve image

Sandwich ELISA: ARG56645 anti-IL1 beta antibody as a capture antibody at 0.5 - 2.0 μ g/ml combined with ARG56755 anti-IL1 beta antibody (Biotin) as a detection antibody. Results of a typical standard run with optical density.