

ARG56655 anti-IL10 antibody

Package: 50 µg
Store at: -20°C

Summary

Product Description	Rabbit Polyclonal antibody recognizes IL10
Tested Reactivity	Hu
Tested Application	ELISA, IHC-P, Neut, WB
Host	Rabbit
Clonality	Polyclonal
Isotype	IgG
Target Name	IL10
Species	Human
Immunogen	E.coli derived Recombinant Human IL-10. (MSPGQGTQSE NSCTHFPGNL PNMLRDLRDA FSRVKTFFQM KDQLDNLLK ESLEDFKGY LGCQALSEMI QFYLEEVMQP AENQDPDIKA HVNSLGENLK TLRRLRRCH RFLPCENKSK AVEQVKNAFN KLQEKGIYKA MSEFDIFINY IEAYMTMKIR N)
Conjugation	Un-conjugated
Alternate Names	IL10A; GVHDS; TGIF; IL-10; Cytokine synthesis inhibitory factor; CSIF; Interleukin-10

Application Instructions

Application table	Application	Dilution
	ELISA	Sandwich: 0.5 - 2.0 µg/ml with ARG56765 as a detection antibody
	IHC-P	5.0 µg/ml
	Neut	1.2 - 1.8 µg/ml (To yield [ND50] of the biological activity of hIL - 10 (1.0 ng/ml))
	WB	0.1 - 0.2 µg/ml

Application Note * The dilutions indicate recommended starting dilutions and the optimal dilutions or concentrations should be determined by the scientist.

Properties

Form	Liquid
Purification	Affinity purification with immunogen.
Buffer	PBS (pH 7.2)
Concentration	1 mg/ml
Storage instruction	For continuous use, store undiluted antibody at 2-8°C for up to a week. For long-term storage, aliquot and store at -20°C or below. Storage in frost free freezers is not recommended. Avoid repeated freeze/thaw cycles. Suggest spin the vial prior to opening. The antibody solution should be gently mixed before use.

Note

For laboratory research only, not for drug, diagnostic or other use.

Bioinformation

Database links

[GeneID: 3586 Human](#)

[Swiss-port # P22301 Human](#)

Gene Symbol

IL10

Gene Full Name

interleukin 10

Background

The protein encoded by this gene is a cytokine produced primarily by monocytes and to a lesser extent by lymphocytes. This cytokine has pleiotropic effects in immunoregulation and inflammation. It down-regulates the expression of Th1 cytokines, MHC class II Ags, and costimulatory molecules on macrophages. It also enhances B cell survival, proliferation, and antibody production. This cytokine can block NF-kappa B activity, and is involved in the regulation of the JAK-STAT signaling pathway. Knockout studies in mice suggested the function of this cytokine as an essential immunoregulator in the intestinal tract. Mutations in this gene are associated with an increased susceptibility to HIV-1 infection and rheumatoid arthritis.[provided by RefSeq, May 2011]

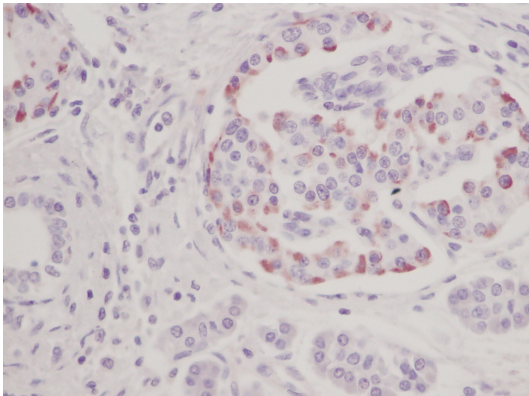
Function

Inhibits the synthesis of a number of cytokines, including IFN-gamma, IL-2, IL-3, TNF and GM-CSF produced by activated macrophages and by helper T-cells. [UniProt]

Calculated Mw

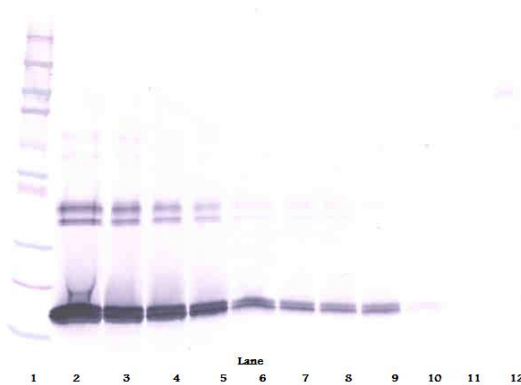
21 kDa

Images



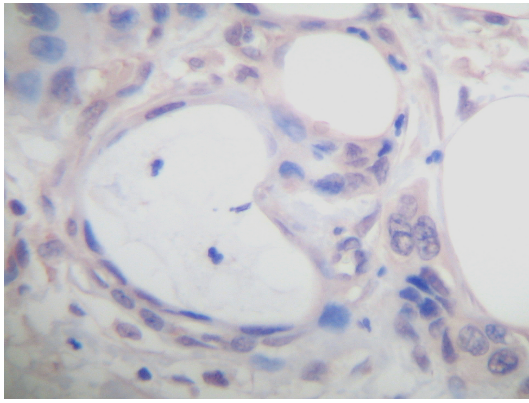
ARG56655 anti-IL10 antibody IHC-P image

Immunohistochemistry: Formalin-fixed and paraffin-embedded sections of Human pancreas adenocarcinoma tissue. The recommended ARG56655 anti-IL10 antibody concentration is 5.0 µg/ml with an overnight incubation at 4°C. An HRP-labeled polymer detection system was used with an alcohol-soluble AEC chromogen. Antigen Retrieval: Boil tissue section in Sodium Citrate buffer (pH 6.0) followed by cooling at RT for 20 min.



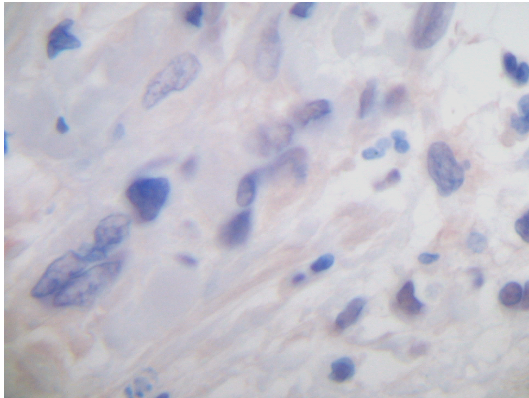
ARG56655 anti-IL10 antibody WB image

Western blot: 250 - 0.24 ng of Human IL-10 stained with ARG56655 anti-IL10 antibody, under reducing conditions.



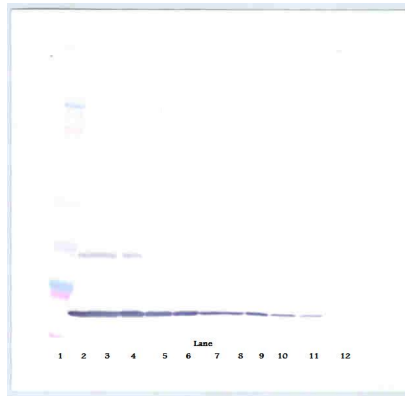
ARG56655 anti-IL10 antibody IHC-P image

Immunohistochemistry: Formalin-fixed and paraffin-embedded sections of Human pancreas adenocarcinoma tissue. The recommended ARG56655 anti-IL10 antibody concentration is 5.0 µg/ml with an overnight incubation at 4°C. An HRP-labeled polymer detection system was used with an alcohol-soluble AEC chromogen. Antigen Retrieval: Boil tissue section in Sodium Citrate buffer (pH 6.0) followed by cooling at RT for 20 min.



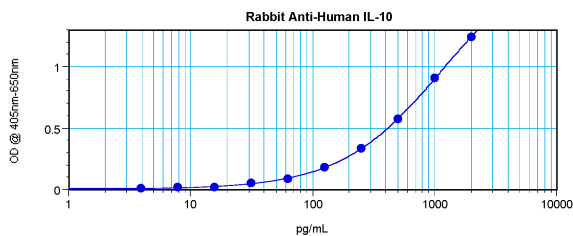
ARG56655 anti-IL10 antibody IHC-P image

Immunohistochemistry: Formalin-fixed and paraffin-embedded sections of Human pancreas adenocarcinoma tissue. The recommended ARG56655 anti-IL10 antibody concentration is 5.0 µg/ml with an overnight incubation at 4°C. An HRP-labeled polymer detection system was used with an alcohol-soluble AEC chromogen. Antigen Retrieval: Boil tissue section in Sodium Citrate buffer (pH 6.0) followed by cooling at RT for 20 min.



ARG56655 anti-IL10 antibody WB image

Western blot: 250 - 0.24 ng of Human IL-10 stained with ARG56655 anti-IL10 antibody, under non-reducing conditions.



ARG56655 anti-IL10 antibody standard curve image

Sandwich ELISA: ARG56655 anti-IL10 antibody as a capture antibody at 0.5 - 2.0 µg/ml combined with ARG56765 anti-IL10 antibody (Biotin) as a detection antibody. Results of a typical standard run with optical density.