

ARG56658 anti-IL2 antibody

Package: 50 µg
Store at: -20°C

Summary

Product Description	Goat Polyclonal antibody recognizes IL2
Tested Reactivity	Hu
Tested Application	ELISA, IHC-P, Neut, WB
Host	Goat
Clonality	Polyclonal
Isotype	IgG
Target Name	IL2
Species	Human
Immunogen	E.coli derived Recombinant Human IL-2. (MAPTSSSTKK TQLQLEHLL DLQMILNGIN NYKNPKLTRM LTFKFYMPKK ATELKHLQCL EEELKPLEEV LNLAQSKNFH LRPRDLISNI NVIVLELKGS ETTFMCEYAD ETATIVEFLN RWITFAQSII STLT)
Conjugation	Un-conjugated
Alternate Names	TCGF; IL-2; lymphokine; Interleukin-2; Aldesleukin; T-cell growth factor

Application Instructions

Application table	Application	Dilution
	ELISA	Sandwich: 0.5 - 2.0 µg/ml with ARG56767 as a detection antibody
	IHC-P	0.5 µg/ml
	Neut	0.12 - 0.16 µg/ml (To yield [ND50] of the biological activity of hIL - 2 (2.0 ng/ml))
	WB	0.1 - 0.2 µg/ml
Application Note	* The dilutions indicate recommended starting dilutions and the optimal dilutions or concentrations should be determined by the scientist.	

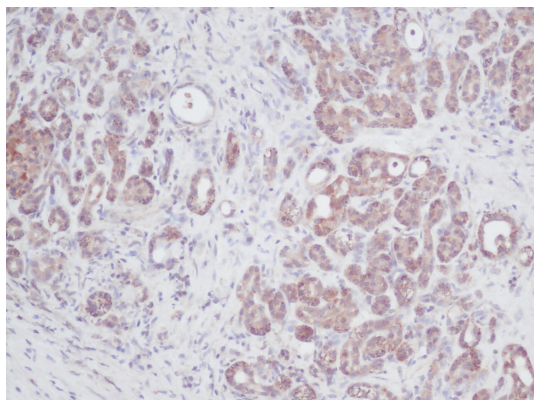
Properties

Form	Liquid
Purification	Affinity purification with immunogen.
Buffer	PBS (pH 7.2)
Concentration	1 mg/ml
Storage instruction	For continuous use, store undiluted antibody at 2-8°C for up to a week. For long-term storage, aliquot and store at -20°C or below. Storage in frost free freezers is not recommended. Avoid repeated freeze/thaw cycles. Suggest spin the vial prior to opening. The antibody solution should be gently mixed before use.

Bioinformation

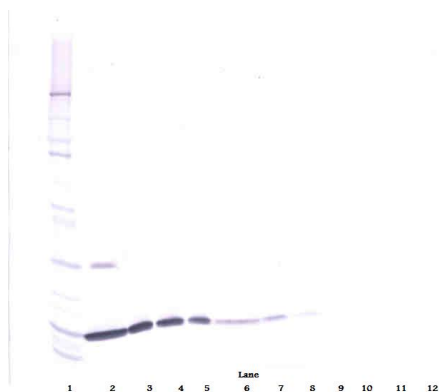
Database links	GeneID: 3558 Human Swiss-port # P60568 Human
Gene Symbol	IL2
Gene Full Name	interleukin 2
Background	The protein encoded by this gene is a secreted cytokine that is important for the proliferation of T and B lymphocytes. The receptor of this cytokine is a heterotrimeric protein complex whose gamma chain is also shared by interleukin 4 (IL4) and interleukin 7 (IL7). The expression of this gene in mature thymocytes is monoallelic, which represents an unusual regulatory mode for controlling the precise expression of a single gene. The targeted disruption of a similar gene in mice leads to ulcerative colitis-like disease, which suggests an essential role of this gene in the immune response to antigenic stimuli. [provided by RefSeq, Jul 2008]
Function	Produced by T-cells in response to antigenic or mitogenic stimulation, this protein is required for T-cell proliferation and other activities crucial to regulation of the immune response. Can stimulate B-cells, monocytes, lymphokine-activated killer cells, natural killer cells, and glioma cells. [UniProt]
Calculated Mw	18 kDa

Images



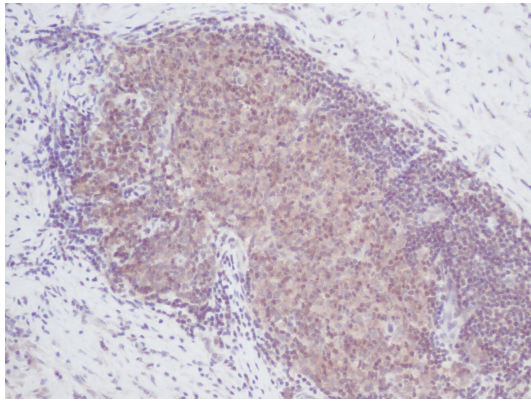
ARG56658 anti-IL2 antibody IHC-P image

Immunohistochemistry: Formalin-fixed and paraffin-embedded sections of Human breast invasive ductal carcinoma. The recommended ARG56658 anti-IL2 antibody concentration is 0.5 µg/mL with an overnight incubation at 4°C. An HRP-labeled polymer detection system was used with a DAB chromogen. Antigen Retrieval: Boil tissue section in Sodium Citrate buffer (pH 6.0) followed by cooling at RT for 20 min.



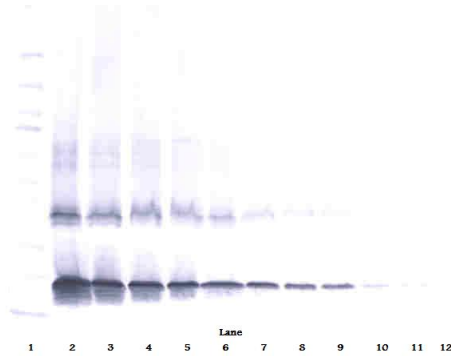
ARG56658 anti-IL2 antibody WB image

Western blot: 250 - 0.24 ng of Human IL-2 stained with ARG56658 anti-IL2 antibody, under reducing conditions.



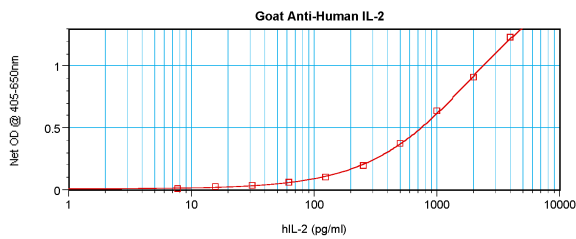
ARG56658 anti-IL2 antibody IHC-P image

Immunohistochemistry: Formalin-fixed and paraffin-embedded sections of Human breast invasive ductal carcinoma. The recommended ARG56658 anti-IL2 antibody concentration is 0.5 µg/mL with an overnight incubation at 4°C. An HRP-labeled polymer detection system was used with a DAB chromogen. Antigen Retrieval: Boil tissue section in Sodium Citrate buffer (pH 6.0) followed by cooling at RT for 20 min.



ARG56658 anti-IL2 antibody WB image

Western blot: 250 - 0.24 ng of Human IL-2 stained with ARG56658 anti-IL2 antibody, under non-reducing conditions.



ARG56658 anti-IL2 antibody standard curve image

Sandwich ELISA: ARG56658 anti-IL2 antibody as a capture antibody at 0.5 - 2.0 µg/ml combined with ARG56767 anti-IL2 antibody (Biotin) as a detection antibody. Results of a typical standard run with optical density.