

ARG56677 anti-G-CSF antibody

Package: 50 µg
Store at: -20°C

Summary

Product Description	Rabbit Polyclonal antibody recognizes G-CSF
Tested Reactivity	Ms
Tested Application	ELISA, Neut, WB
Host	Rabbit
Clonality	Polyclonal
Isotype	IgG
Target Name	G-CSF
Species	Mouse
Immunogen	E.coli derived Recombinant Mouse G-CSF. (MVPLVTVSAL PPSLPLPRSF LLKSLEQVRK IQASGSVLE QLCATYKLCH PEELVLLGHS LGIPKASLSG CSSQALQQTQ CLSQLHSGLC LYQGLLQALS GISPALPTL DLLQLDVANF ATTIWQQMEN LGVAPTQPT QSAMPAFTSA FQRRAGGVLA ISYLQGFLET ARLALHHLA)
Conjugation	Un-conjugated
Alternate Names	Granulocyte colony-stimulating factor; Lenograstim; C17orf33; GCSF; G-CSF; Filgrastim; Pluripoietin; CSF3OS

Application Instructions

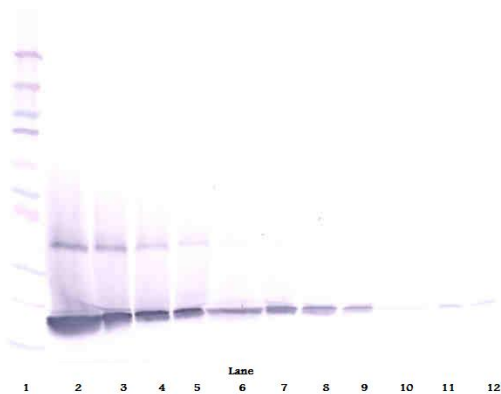
Application table	Application	Dilution
	ELISA	Sandwich: 0.5 - 2.0 µg/ml with ARG56787 as a detection antibody
	Neut	0.005 - 0.010 µg/ml (To yield [ND50] of the biological activity of mG - CSF (0.5ng/ml))
	WB	0.1 - 0.2 µg/ml
Application Note	* The dilutions indicate recommended starting dilutions and the optimal dilutions or concentrations should be determined by the scientist.	

Properties

Form	Liquid
Purification	Affinity purification with immunogen.
Buffer	PBS (pH 7.2)
Concentration	1 mg/ml
Storage instruction	For continuous use, store undiluted antibody at 2-8°C for up to a week. For long-term storage, aliquot and store at -20°C or below. Storage in frost free freezers is not recommended. Avoid repeated freeze/thaw cycles. Suggest spin the vial prior to opening. The antibody solution should be gently mixed before use.

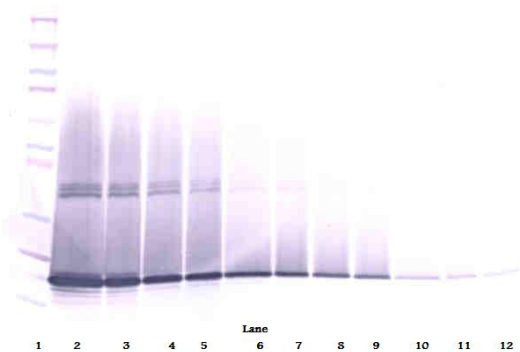
Note	For laboratory research only, not for drug, diagnostic or other use.
Bioinformation	
Database links	GeneID: 12985 Mouse Swiss-port # P09920 Mouse
Gene Symbol	Csf3
Gene Full Name	colony stimulating factor 3 (granulocyte)
Background	The protein encoded by this gene is a cytokine that controls the production, differentiation, and function of granulocytes. The active protein is found extracellularly. Alternatively spliced transcript variants have been described for this gene. [provided by RefSeq, May 2010]
Function	Granulocyte/macrophage colony-stimulating factors are cytokines that act in hematopoiesis by controlling the production, differentiation, and function of 2 related white cell populations of the blood, the granulocytes and the monocytes-macrophages. This CSF induces granulocytes. [UniProt]
Calculated Mw	22 kDa
PTM	O-glycan consists of Gal-GalNAc disaccharide which can be modified with up to two sialic acid residues (done in recombinantly expressed G-CSF from CHO cells).

Images



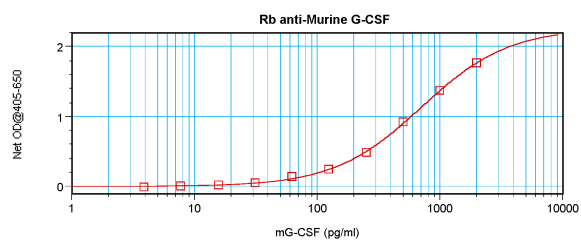
ARG56677 anti-G-CSF antibody WB image

Western blot: 250 - 0.24 ng of Mouse G-CSF stained with ARG56677 anti-G-CSF antibody, under reducing conditions.



ARG56677 anti-G-CSF antibody WB image

Western blot: 250 - 0.24 ng of Mouse G-CSF stained with ARG56677 anti-G-CSF antibody, under non-reducing conditions.



ARG56677 anti-G-CSF antibody standard curve image

Sandwich ELISA: ARG56677 anti-G-CSF antibody as a capture antibody at 0.5 - 2.0 µg/ml combined with ARG56787 anti-G-CSF antibody (Biotin) as a detection antibody. Results of a typical standard run with optical density.