

ARG56679 anti-CCL1 / I-309 antibody

Package: 50 µg
Store at: -20°C

Summary

Product Description	Rabbit Polyclonal antibody recognizes CCL1 / I-309
Tested Reactivity	Hu
Tested Application	ELISA, IHC-P, WB
Host	Rabbit
Clonality	Polyclonal
Isotype	IgG
Target Name	CCL1 / I-309
Species	Human
Immunogen	E.coli derived Recombinant Human CCL1. (SKSMQVPFSR CCFSFAEQEI PLRAILCYRN TSSICSNEGL IFKLKRGKEA CALDTVGVVQ RHRKMLRHCP SKRK)
Conjugation	Un-conjugated
Alternate Names	TCA3; T lymphocyte-secreted protein I-309; SISE; P500; Small-inducible cytokine A1; I-309; SCYA1; C-C motif chemokine 1

Application Instructions

Application table	Application	Dilution
	ELISA	Sandwich: 0.5 - 2.0 µg/ml with ARG56789 as a detection antibody
	IHC-P	0.25 µg/ml - 0.50 µg/ml
	WB	0.1 - 0.2 µg/ml
Application Note	* The dilutions indicate recommended starting dilutions and the optimal dilutions or concentrations should be determined by the scientist.	

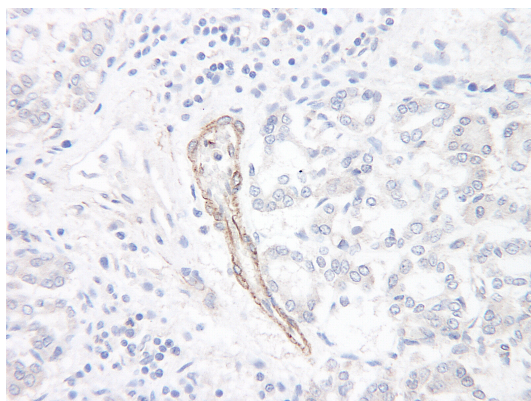
Properties

Form	Liquid
Purification	Affinity purification with immunogen.
Buffer	PBS (pH 7.2)
Concentration	1 mg/ml
Storage instruction	For continuous use, store undiluted antibody at 2-8°C for up to a week. For long-term storage, aliquot and store at -20°C or below. Storage in frost free freezers is not recommended. Avoid repeated freeze/thaw cycles. Suggest spin the vial prior to opening. The antibody solution should be gently mixed before use.
Note	For laboratory research only, not for drug, diagnostic or other use.

Bioinformation

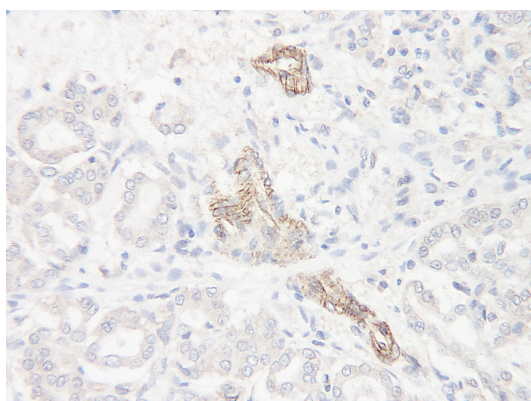
Database links	GeneID: 6346 Human Swiss-port # P22362 Human
Gene Symbol	CCL1
Gene Full Name	chemokine (C-C motif) ligand 1
Background	This antimicrobial gene is one of several chemokine genes clustered on the q-arm of chromosome 17. Chemokines form a superfamily of secreted proteins involved in immunoregulatory and inflammatory processes. The superfamily is divided into four subfamilies based on the arrangement of the N-terminal cysteine residues of the mature peptide. This chemokine, a member of the CC subfamily, is secreted by activated T cells and displays chemotactic activity for monocytes but not for neutrophils. It binds to the chemokine (C-C motif) receptor 8. [provided by RefSeq, Sep 2014]
Function	Cytokine that is chemotactic for monocytes but not for neutrophils. Binds to CCR8. [UniProt]
Calculated Mw	11 kDa

Images



ARG56679 anti-CCL1 / I-309 antibody IHC-P image

Immunohistochemistry: Formalin-fixed and paraffin-embedded sections of Human normal pancreas. The recommended ARG56679 anti-CCL1 / I-309 antibody concentration is 0.25 µg/mL- 0.50 µg/mL with an overnight incubation at 4°C. An HRP-labeled polymer detection system was used with a DAB chromogen. Antigen Retrieval: Boil tissue section in Sodium Citrate buffer (pH 6.0) followed by cooling at RT for 20 min.



ARG56679 anti-CCL1 / I-309 antibody IHC-P image

Immunohistochemistry: Formalin-fixed and paraffin-embedded sections of Human normal pancreas. The recommended ARG56679 anti-CCL1 / I-309 antibody concentration is 0.25 µg/mL- 0.50 µg/mL with an overnight incubation at 4°C. An HRP-labeled polymer detection system was used with a DAB chromogen. Antigen Retrieval: Boil tissue section in Sodium Citrate buffer (pH 6.0) followed by cooling at RT for 20 min.