

ARG56688 anti-Galectin 3 antibody

Package: 50 µg
Store at: -20°C

Summary

Product Description	Rabbit Polyclonal antibody recognizes Galectin 3
Tested Reactivity	Hu
Tested Application	ELISA, IHC-P, WB
Host	Rabbit
Clonality	Polyclonal
Isotype	IgG
Target Name	Galectin 3
Species	Human
Immunogen	E.coli derived Recombinant Human Galectin-3. (ADNFSLHDAL SGSGNPNPQG WPGAWGNQPA GAGGYPGASY PGAYPGQAPP GAYPGQAPP AYHGAPGAYP GAPAPGVYPG PPSGPGAYPS SGQPSAPGAY PATGPYGAPA GPLIVPYNLP LPGGVVPRML ITILGTVKPN ANRIALDFQR GNDVAFHFNP RFNENNRRI VCNTKLDNNW GREERQSVFP FESGKPFKIQL VLEPDHFKV AVNDAHLLQY NHRVKKLNEI SKLGISGDID LTSASYTMI)
Conjugation	Un-conjugated
Alternate Names	Laminin-binding protein; Gal-3; L-31; GALBP; Galactoside-binding protein; MAC2; GAL3; GALIG; Mac-2 antigen; CBP 35; Galectin-3; CBP35; Galactose-specific lectin 3; IgE-binding protein; L31; 35 kDa lectin; Carbohydrate-binding protein 35; Lectin L-29

Application Instructions

Application table	Application	Dilution
	ELISA	Sandwich: 0.5 - 2.0 µg/ml with ARG56797 as a detection antibody
	IHC-P	31.25 ng/ml
	WB	0.1 - 0.2 µg/ml
Application Note	* The dilutions indicate recommended starting dilutions and the optimal dilutions or concentrations should be determined by the scientist.	

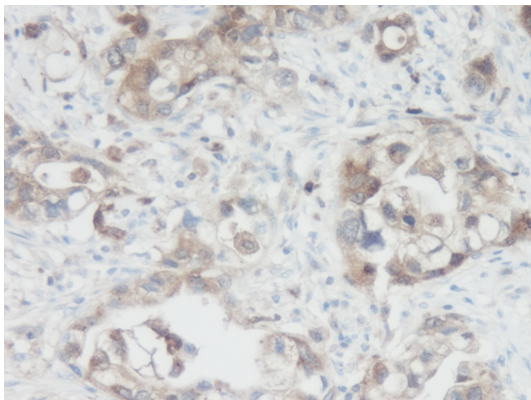
Properties

Form	Liquid
Purification	Affinity purification with immunogen.
Buffer	PBS (pH 7.2)
Concentration	1 mg/ml
Storage instruction	For continuous use, store undiluted antibody at 2-8°C for up to a week. For long-term storage, aliquot and store at -20°C or below. Storage in frost free freezers is not recommended. Avoid repeated freeze/thaw cycles. Suggest spin the vial prior to opening. The antibody solution should be gently mixed before use.

Bioinformation

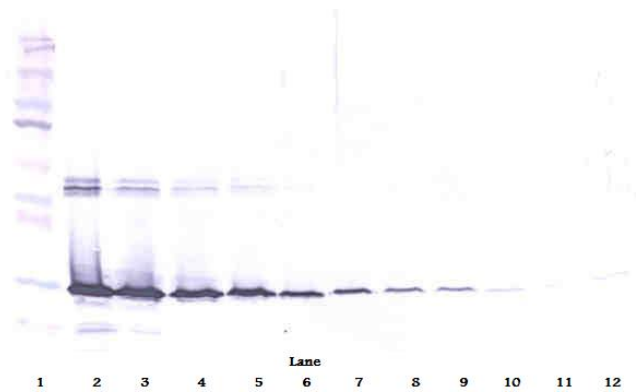
Database links	GeneID: 3958 Human Swiss-port # P17931 Human
Gene Symbol	LGALS3
Gene Full Name	lectin, galactoside-binding, soluble, 3
Background	This gene encodes a member of the galectin family of carbohydrate binding proteins. Members of this protein family have an affinity for beta-galactosides. The encoded protein is characterized by an N-terminal proline-rich tandem repeat domain and a single C-terminal carbohydrate recognition domain. This protein can self-associate through the N-terminal domain allowing it to bind to multivalent saccharide ligands. This protein localizes to the extracellular matrix, the cytoplasm and the nucleus. This protein plays a role in numerous cellular functions including apoptosis, innate immunity, cell adhesion and T-cell regulation. The protein exhibits antimicrobial activity against bacteria and fungi. Alternate splicing results in multiple transcript variants.[provided by RefSeq, Oct 2014]
Function	Galactose-specific lectin which binds IgE. May mediate with the alpha-3, beta-1 integrin the stimulation by CSPG4 of endothelial cells migration. Together with DMBT1, required for terminal differentiation of columnar epithelial cells during early embryogenesis (By similarity). In the nucleus: acts as a pre-mRNA splicing factor. Involved in acute inflammatory responses including neutrophil activation and adhesion, chemoattraction of monocytes macrophages, opsonization of apoptotic neutrophils, and activation of mast cells. [UniProt]
Calculated Mw	26 kDa

Images



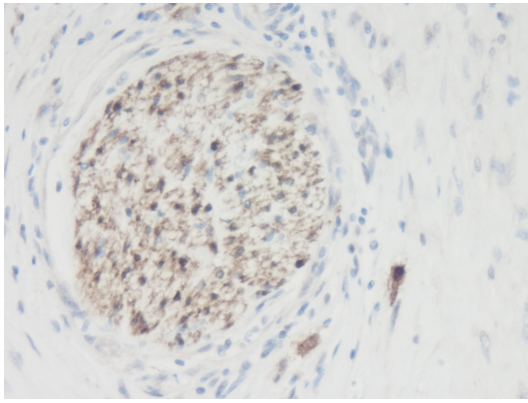
ARG56688 anti-Galectin 3 antibody IHC-P image

Immunohistochemistry: Formalin-fixed and paraffin-embedded sections of Human pancreas infiltrating ductal adenocarcinoma tissue. The recommended ARG56688 anti-Galectin 3 antibody concentration is 31.25 ng/mL with an overnight incubation at 4°C. An HRP-labeled polymer detection system was used with a DAB chromogen. Antigen Retrieval: Boil tissue section in Sodium Citrate buffer (pH 6.0) followed by cooling at RT for 20 min.



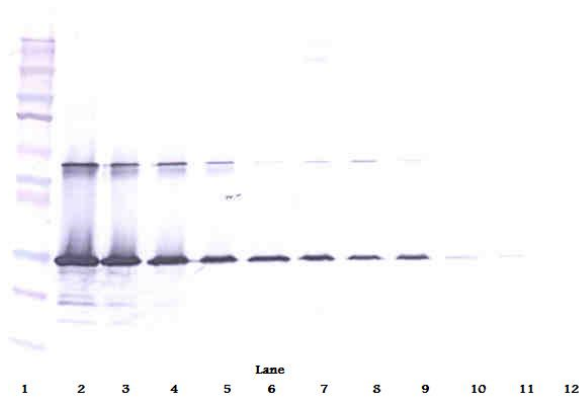
ARG56688 anti-Galectin 3 antibody WB image

Western blot: 250 - 0.24 ng of Human Galectin-3 stained with ARG56688 anti-Galectin 3 antibody, under reducing conditions.



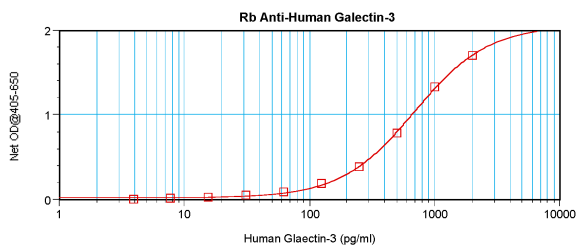
ARG56688 anti-Galectin 3 antibody IHC-P image

Immunohistochemistry: Formalin-fixed and paraffin-embedded sections of Human pancreas infiltrating ductal adenocarcinoma tissue. The recommended ARG56688 anti-Galectin 3 antibody concentration is 31.25 ng/mL with an overnight incubation at 4°C. An HRP-labeled polymer detection system was used with a DAB chromogen. Antigen Retrieval: Boil tissue section in Sodium Citrate buffer (pH 6.0) followed by cooling at RT for 20 min.



ARG56688 anti-Galectin 3 antibody WB image

Western blot: 250 - 0.24 ng of Human Galectin-3 stained with ARG56688 anti-Galectin 3 antibody, under non-reducing conditions.



ARG56688 anti-Galectin 3 antibody standard curve image

Sandwich ELISA: ARG56688 anti-Galectin 3 antibody as a capture antibody at 0.5 - 2.0 µg/ml combined with ARG56797 anti-Galectin 3 antibody (Biotin) as a detection antibody. Results of a typical standard run with optical density.