

## ARG56702 anti-MCP3 antibody

Package: 50 µg  
Store at: -20°C

### Summary

Product Description	Goat Polyclonal antibody recognizes MCP3
Tested Reactivity	Ms
Tested Application	ELISA, Neut, WB
Host	Goat
Clonality	Polyclonal
Isotype	IgG
Target Name	MCP3
Species	Mouse
Immunogen	E.coli derived Recombinant Mouse MCP-3 (CCL7). (QPDGPNASTC CYVKKQKIPK RNLKSYRRIT SSRCPWEAVI FKTKKGMEVC AEAHQKWVEE AIAYLDMKTP TPKP)
Conjugation	Un-conjugated
Alternate Names	MCP3; NC28; Monocyte chemotactic protein 3; MARC; Small-inducible cytokine A7; FIC; C-C motif chemokine 7; Monocyte chemoattractant protein 3; MCP-3; SCYA7; SCYA6

### Application Instructions

Application table	Application	Dilution
	ELISA	Sandwich: 0.5 - 2.0 µg/ml with ARG56811 as a detection antibody
	Neut	4.0 - 6.0 µg/ml (To yield [ND50] of the biological activity of Murine MCP - 3 (100.0 ng/ml) )
	WB	0.1 - 0.2 µg/ml

**Application Note** \* The dilutions indicate recommended starting dilutions and the optimal dilutions or concentrations should be determined by the scientist.

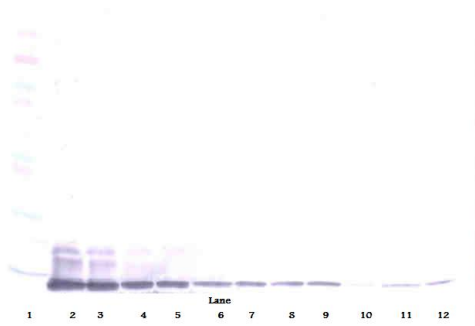
### Properties

Form	Liquid
Purification	Affinity purification with immunogen.
Buffer	PBS (pH 7.2)
Concentration	1 mg/ml
Storage instruction	For continuous use, store undiluted antibody at 2-8°C for up to a week. For long-term storage, aliquot and store at -20°C or below. Storage in frost free freezers is not recommended. Avoid repeated freeze/thaw cycles. Suggest spin the vial prior to opening. The antibody solution should be gently mixed before use.
Note	For laboratory research only, not for drug, diagnostic or other use.

## Bioinformation

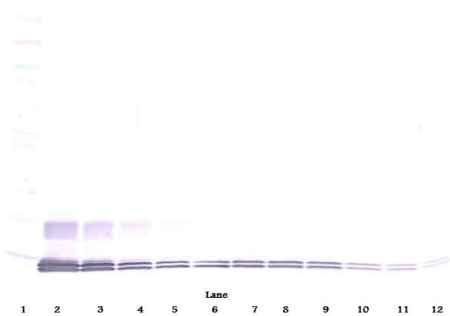
Database links	<a href="#">GeneID: 20306 Mouse</a> <a href="#">Swiss-port # Q03366 Mouse</a>
Gene Symbol	Ccl7
Gene Full Name	chemokine (C-C motif) ligand 7
Background	This gene encodes monocyte chemotactic protein 3, a secreted chemokine which attracts macrophages during inflammation and metastasis. It is a member of the C-C subfamily of chemokines which are characterized by having two adjacent cysteine residues. The protein is an in vivo substrate of matrix metalloproteinase 2, an enzyme which degrades components of the extracellular matrix. This gene is part of a cluster of C-C chemokine family members on chromosome 17q. [provided by RefSeq, Jul 2008]
Function	Chemotactic factor that attracts monocytes and eosinophils, but not neutrophils. Augments monocyte anti-tumor activity. Also induces the release of gelatinase B. This protein can bind heparin. Binds to CCR1, CCR2 and CCR3. [UniProt]
Calculated Mw	11 kDa
PTM	O-glycosylated.

## Images



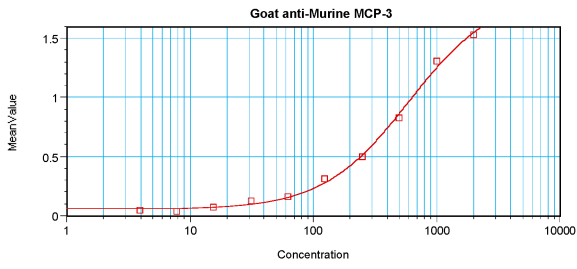
ARG56702 anti-MCP3 antibody WB image

Western blot: 250 - 0.24 ng of Mouse MCP-3 stained with ARG56702 anti-MCP3 antibody, under reducing conditions.



ARG56702 anti-MCP3 antibody WB image

Western blot: 250 - 0.24 ng of Mouse MCP-3 stained with ARG56702 anti-MCP3 antibody, under non-reducing conditions.



### ARG56702 anti-MCP3 antibody standard curve image

Sandwich ELISA: ARG56702 anti-MCP3 antibody as a capture antibody at 0.5 - 2.0  $\mu\text{g}/\text{ml}$  combined with ARG56811 anti-MCP3 antibody (Biotin) as a detection antibody. Results of a typical standard run with optical density.