

## ARG56704 anti-CCL20 / MIP3 alpha antibody

Package: 50 µg  
Store at: -20°C

### Summary

Product Description	Rabbit Polyclonal antibody recognizes CCL20 / MIP3 alpha
Tested Reactivity	Hu
Tested Application	ELISA, IHC-P, Neut, WB
Host	Rabbit
Clonality	Polyclonal
Isotype	IgG
Target Name	CCL20 / MIP3 alpha
Species	Human
Immunogen	E.coli derived Recombinant Human MIP-3α (CCL20). (ASNFDCCCLGY TDRILHPKFI VGFTRQLANE GCDINAIIFH TKKKLSVCAN PKQTWVVKYIV RLLSKKVKNM)
Conjugation	Un-conjugated
Alternate Names	ST38; CC chemokine LARC; Exodus; Macrophage inflammatory protein 3 alpha; 2-70; MIP-3a; Beta-chemokine exodus-1; SCYA20; MIP-3-alpha; LARC; MIP3A; 1-64; Small-inducible cytokine A20; 1-67; CKb4; C-C motif chemokine 20; Liver and activation-regulated chemokine

### Application Instructions

Application table	Application	Dilution
	ELISA	Sandwich: 0.5 - 2.0 µg/ml with ARG56813 as a detection antibody
	IHC-P	0.5 µg/ml
	Neut	Assay-dependent (lot-specific)
	WB	0.1 - 0.2 µg/ml
Application Note	Neutralizing: The application for neutralizing is lot-specific, please contact <a href="mailto:info@arigobio.com">info@arigobio.com</a> for the detail. * The dilutions indicate recommended starting dilutions and the optimal dilutions or concentrations should be determined by the scientist.	

### Properties

Form	Liquid
Purification	Affinity purification with immunogen.
Buffer	PBS (pH 7.2)
Concentration	1 mg/ml
Storage instruction	For continuous use, store undiluted antibody at 2-8°C for up to a week. For long-term storage, aliquot and store at -20°C or below. Storage in frost free freezers is not recommended. Avoid repeated freeze/thaw cycles. Suggest spin the vial prior to opening. The antibody solution should be gently mixed

before use.

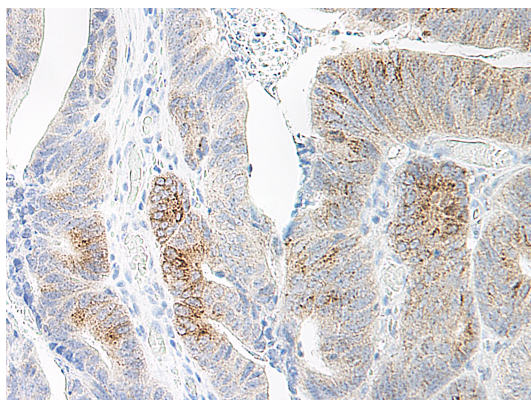
#### Note

For laboratory research only, not for drug, diagnostic or other use.

## Bioinformation

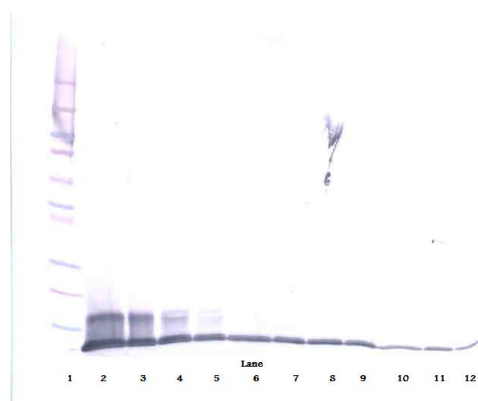
Database links	<a href="#">GeneID: 6364 Human</a> <a href="#">Swiss-port # P78556 Human</a>
Gene Symbol	CCL20
Gene Full Name	chemokine (C-C motif) ligand 20
Background	This antimicrobial gene belongs to the subfamily of small cytokine CC genes. Cytokines are a family of secreted proteins involved in immunoregulatory and inflammatory processes. The CC cytokines are proteins characterized by two adjacent cysteines. The protein encoded by this gene displays chemotactic activity for lymphocytes and can repress proliferation of myeloid progenitors. Two transcript variants encoding different isoforms have been found for this gene. [provided by RefSeq, Sep 2014]
Function	Chemotactic factor that attracts lymphocytes and, slightly, neutrophils, but not monocytes. Inhibits proliferation of myeloid progenitors in colony formation assays. May be involved in formation and function of the mucosal lymphoid tissues by attracting lymphocytes and dendritic cells towards epithelial cells. C-terminal processed forms have been shown to be equally chemotactically active for leukocytes. Possesses antibacterial activity E.coli ATCC 25922 and S.aureus ATCC 29213. [UniProt]
Calculated Mw	11 kDa
PTM	C-terminal processed forms which lack 1, 3 or 6 amino acids are produced by proteolytic cleavage after secretion from peripheral blood monocytes.

## Images



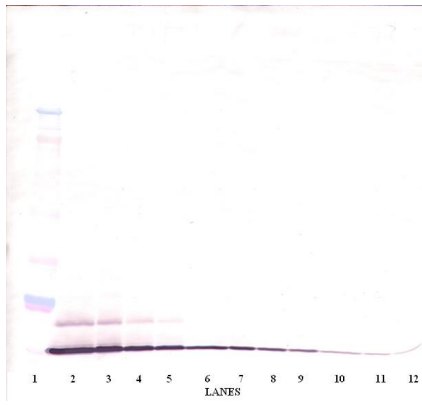
ARG56704 anti-CCL20 / MIP3 alpha antibody IHC-P image

Immunohistochemistry: Formalin-fixed and paraffin-embedded sections of Human colon/rectum adenocarcinoma tissue. The recommended ARG56704 anti-CCL20 / MIP3 alpha antibody concentration is 0.5 µg/ml with an overnight incubation at 4°C. An HRP-labeled polymer detection system was used with a DAB chromogen. Antigen Retrieval: Boil tissue section in Sodium Citrate buffer (pH 6.0) followed by cooling at RT for 20 min.



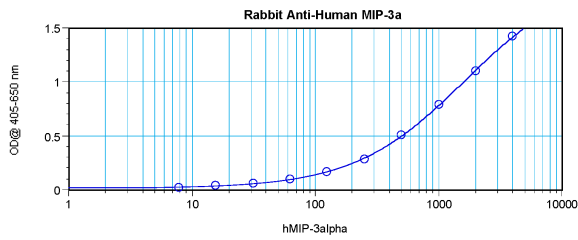
ARG56704 anti-CCL20 / MIP3 alpha antibody WB image

Western blot: 250 - 0.24 ng of HumanMIP-3α stained with ARG56704 anti-CCL20 / MIP3 alpha antibody, under reducing conditions.



ARG56704 anti-CCL20 / MIP3 alpha antibody WB image

Western blot: 250 - 0.24 ng of HumanMIP-3 $\alpha$  stained with ARG56704 anti-CCL20 / MIP3 alpha antibody, under non-reducing conditions.



ARG56704 anti-CCL20 / MIP3 alpha antibody standard curve image

Sandwich ELISA: ARG56704 anti-CCL20 / MIP3 alpha antibody as a capture antibody at 0.5 - 2.0  $\mu$ g/ml combined with ARG56813 anti-CCL20 antibody (Biotin) as a detection antibody. Results of a typical standard run with optical density.