

## ARG56709 anti-CCL8 / MCP2 antibody

Package: 50 µg  
Store at: -20°C

### Summary

Product Description	Rabbit Polyclonal antibody recognizes CCL8 / MCP2
Tested Reactivity	Hu
Tested Application	ELISA, IHC-P, WB
Host	Rabbit
Clonality	Polyclonal
Isotype	IgG
Target Name	CCL8 / MCP2
Species	Human
Immunogen	E.coli derived Recombinant Human MCP-2 (CCL8). (QPDSVSIPIT CCFNVINRKI PIQRLESYTR ITNIQCPKEA VIFKTKRGKE VCADPKERWV RDSMKHLDQI FQNLKP)
Conjugation	Un-conjugated
Alternate Names	SCYA10; MCP2; Small-inducible cytokine A8; 6-76; Monocyte chemotactic protein 2; HC14; SCYA8; C-C motif chemokine 8; MCP-2; Monocyte chemoattractant protein 2

### Application Instructions

Application table	Application	Dilution
	ELISA	Sandwich: 0.5 - 2.0 µg/ml with ARG56818 as a detection antibody
	IHC-P	0.75 µg/ml
	WB	0.1 - 0.2 µg/ml

**Application Note** \* The dilutions indicate recommended starting dilutions and the optimal dilutions or concentrations should be determined by the scientist.

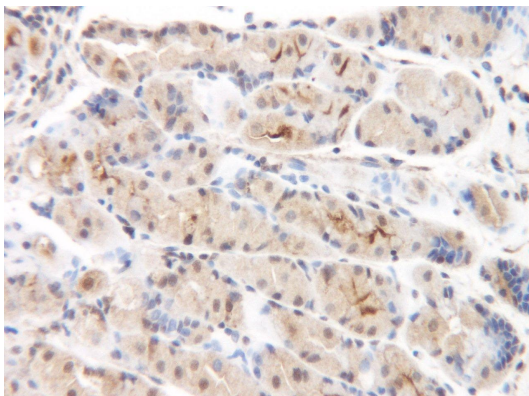
### Properties

Form	Liquid
Purification	Affinity purification with immunogen.
Buffer	PBS (pH 7.2)
Concentration	1 mg/ml
Storage instruction	For continuous use, store undiluted antibody at 2-8°C for up to a week. For long-term storage, aliquot and store at -20°C or below. Storage in frost free freezers is not recommended. Avoid repeated freeze/thaw cycles. Suggest spin the vial prior to opening. The antibody solution should be gently mixed before use.
Note	For laboratory research only, not for drug, diagnostic or other use.

## Bioinformation

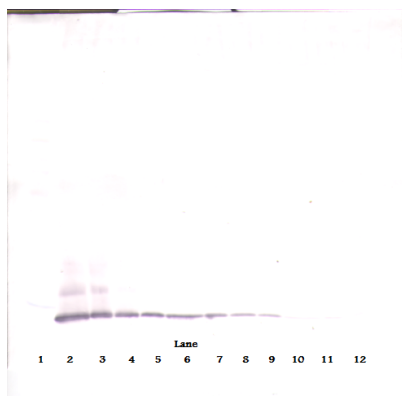
Database links	<a href="#">GeneID: 6355 Human</a> <a href="#">Swiss-port # P80075 Human</a>
Gene Symbol	CCL8
Gene Full Name	chemokine (C-C motif) ligand 8
Background	This antimicrobial gene is one of several chemokine genes clustered on the q-arm of chromosome 17. Chemokines form a superfamily of secreted proteins involved in immunoregulatory and inflammatory processes. The superfamily is divided into four subfamilies based on the arrangement of N-terminal cysteine residues of the mature peptide. This chemokine is a member of the CC subfamily which is characterized by two adjacent cysteine residues. This cytokine displays chemotactic activity for monocytes, lymphocytes, basophils and eosinophils. By recruiting leukocytes to sites of inflammation this cytokine may contribute to tumor-associated leukocyte infiltration and to the antiviral state against HIV infection. [provided by RefSeq, Sep 2014]
Function	Chemotactic factor that attracts monocytes, lymphocytes, basophils and eosinophils. May play a role in neoplasia and inflammatory host responses. This protein can bind heparin. The processed form MCP-2(6-76) does not show monocyte chemotactic activity, but inhibits the chemotactic effect most predominantly of CCL7, and also of CCL2 and CCL5 and CCL8. [UniProt]
Calculated Mw	11 kDa
PTM	N-terminal processed form MCP-2(6-76) is produced by proteolytic cleavage after secretion from peripheral blood monocytes.

## Images



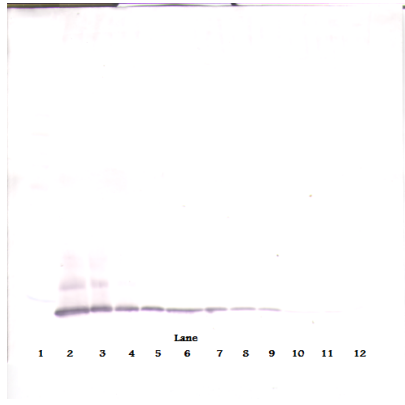
ARG56709 anti-CCL8 / MCP2 antibody IHC-P image

Immunohistochemistry: Formalin-fixed and paraffin-embedded sections of Human normal gastric mucosa. The recommended ARG56709 anti-CCL8 / MCP2 antibody concentration is 0.75 µg/ml with an overnight incubation at 4°C. An HRP-labeled polymer detection system was used with a DAB chromogen. Antigen Retrieval: Boil tissue section in Sodium Citrate buffer (pH 6.0) followed by cooling at RT for 20 min.



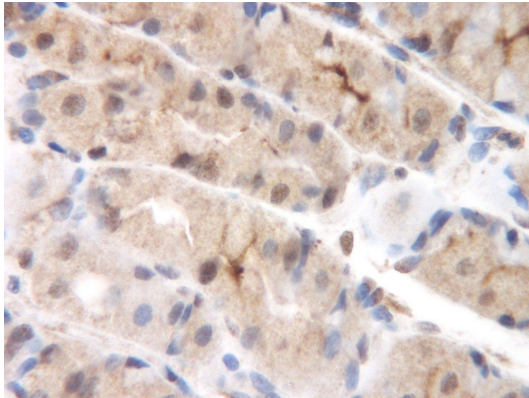
ARG56709 anti-CCL8 / MCP2 antibody WB image

Western blot: 250 - 0.24 ng of Human MCP-2 stained with ARG56709 anti-CCL8 / MCP2 antibody, under reducing conditions.



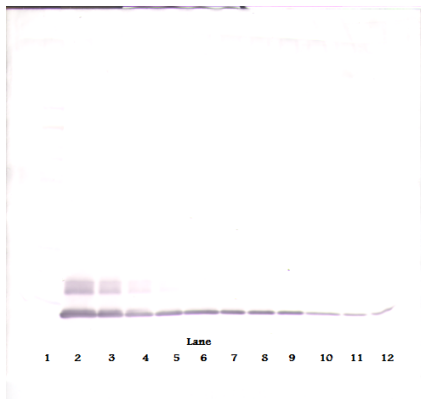
ARG56709 anti-CCL8 / MCP2 antibody WB image

Western blot: 250 - 0.24 ng of Human MCP-2 stained with ARG56709 anti-CCL8 / MCP2 antibody, under reducing conditions.



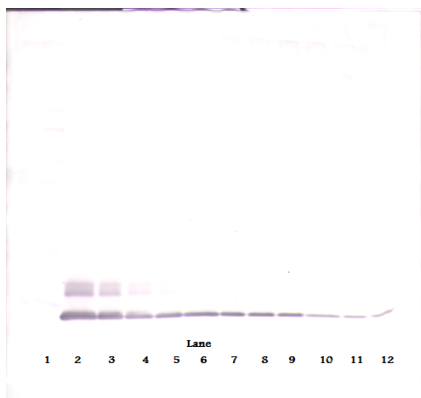
ARG56709 anti-CCL8 / MCP2 antibody IHC-P image

Immunohistochemistry: Formalin-fixed and paraffin-embedded sections of Human normal gastric mucosa. The recommended ARG56709 anti-CCL8 / MCP2 antibody concentration is 0.75 µg/ml with an overnight incubation at 4°C. An HRP-labeled polymer detection system was used with a DAB chromogen. Antigen Retrieval: Boil tissue section in Sodium Citrate buffer (pH 6.0) followed by cooling at RT for 20 min.



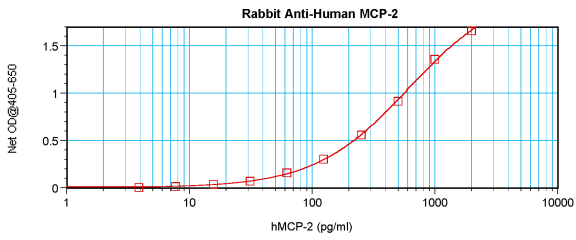
ARG56709 anti-CCL8 / MCP2 antibody WB image

Western blot: 250 - 0.24 ng of Human MCP-2 stained with ARG56709 anti-CCL8 / MCP2 antibody, under non-reducing conditions.



ARG56709 anti-CCL8 / MCP2 antibody WB image

Western blot: 250 - 0.24 ng of Human MCP-2 stained with ARG56709 anti-CCL8 / MCP2 antibody, under non-reducing conditions.



#### ARG56709 anti-CCL8 / MCP2 antibody standard curve image

Sandwich ELISA: ARG56709 anti-CCL8 / MCP2 antibody as a capture antibody at 0.5 - 2.0 µg/ml combined with ARG56818 anti-MCP2 / CCL8 antibody (Biotin) as a detection antibody. Results of a typical standard run with optical density.