

ARG56719 anti-MIA2 antibody

Package: 50 µg
Store at: -20°C

Summary

Product Description	Rabbit Polyclonal antibody recognizes MIA2
Tested Reactivity	Hu
Tested Application	ELISA, IHC-P, WB
Host	Rabbit
Clonality	Polyclonal
Isotype	IgG
Target Name	MIA2
Species	Human
Immunogen	E.coli derived Recombinant Human MIA-2. (MLESTKLLAD LKKCGDLECE ALINRVSAMR DYRGPDCRYL NFKTGEEISV YVKLAGERED LWAGSKGKEF GYFPRDAVQI EEVFISEEIQ MSTKESDFLC L)
Conjugation	Un-conjugated
Alternate Names	Melanoma inhibitory activity protein 2

Application Instructions

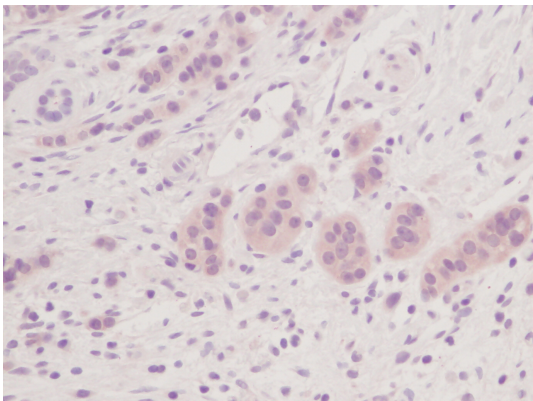
Application table	Application	Dilution
	ELISA	Sandwich: 0.5 - 2.0 µg/ml with ARG56829 as a detection antibody
	IHC-P	5.0 µg/ml
	WB	0.1 - 0.2 µg/ml
Application Note	* The dilutions indicate recommended starting dilutions and the optimal dilutions or concentrations should be determined by the scientist.	

Properties

Form	Liquid
Purification	Affinity purification with immunogen.
Buffer	PBS (pH 7.2)
Concentration	1 mg/ml
Storage instruction	For continuous use, store undiluted antibody at 2-8°C for up to a week. For long-term storage, aliquot and store at -20°C or below. Storage in frost free freezers is not recommended. Avoid repeated freeze/thaw cycles. Suggest spin the vial prior to opening. The antibody solution should be gently mixed before use.
Note	For laboratory research only, not for drug, diagnostic or other use.

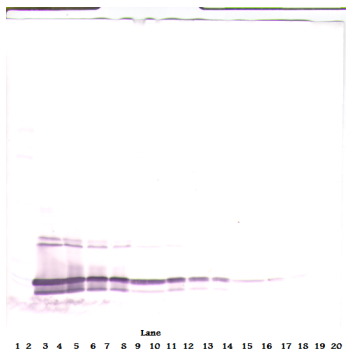
Database links	GeneID: 117153 Human Swiss-port # Q96PC5 Human
Gene Symbol	MIA2
Gene Full Name	melanoma inhibitory activity 2
Function	May play a role in the pathophysiology of liver disease and may serve as a marker of liver damage. [UniProt]
Calculated Mw	160 kDa

Images



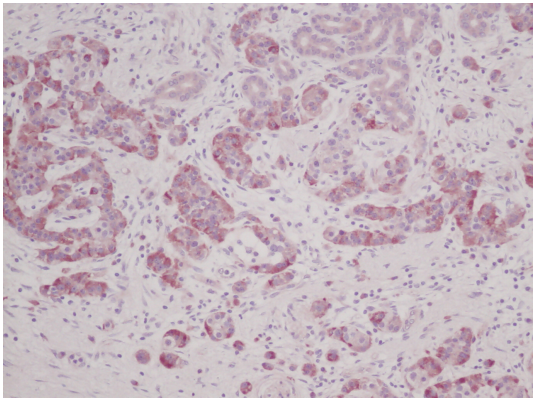
ARG56719 anti-MIA2 antibody IHC-P image

Immunohistochemistry: Formalin-fixed and paraffin-embedded sections of Human pancreas infiltrating ductal adenocarcinoma tissue. The recommended ARG56719 anti-MIA2 antibody concentration is 5.0 µg/ml with an overnight incubation at 4°C. An HRP-labeled polymer detection system was used with an alcohol-soluble AEC chromogen.



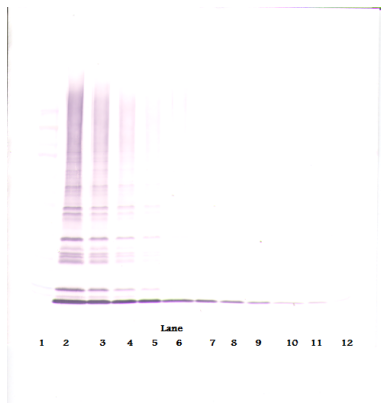
ARG56719 anti-MIA2 antibody WB image

Western blot: 250 - 0.24 ng of Human MIA-2 stained with ARG56719 anti-MIA2 antibody, under reducing conditions.



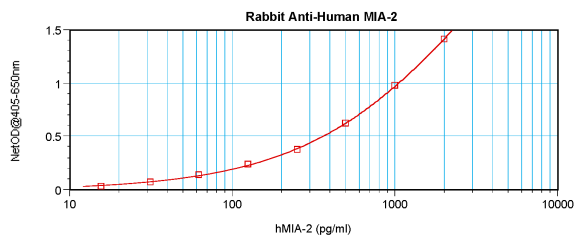
ARG56719 anti-MIA2 antibody IHC-P image

Immunohistochemistry: Formalin-fixed and paraffin-embedded sections of Human pancreas infiltrating ductal adenocarcinoma tissue. The recommended ARG56719 anti-MIA2 antibody concentration is 5.0 µg/ml with an overnight incubation at 4°C. An HRP-labeled polymer detection system was used with an alcohol-soluble AEC chromogen.



ARG56719 anti-MIA2 antibody WB image

Western blot: 250 - 0.24 ng of Human MIA-2 stained with ARG56719 anti-MIA2 antibody, under non-reducing conditions.



ARG56719 anti-MIA2 antibody standard curve image

Sandwich ELISA: ARG56719 anti-MIA2 antibody as a capture antibody at 0.5 - 2.0 µg/ml combined with ARG56829 anti-MIA2 antibody (Biotin) as a detection antibody. Results of a typical standard run with optical density.