

ARG56720 anti-TIMP1 antibody

Package: 50 µg
Store at: -20°C

Summary

Product Description	Rabbit Polyclonal antibody recognizes TIMP1
Tested Reactivity	Hu
Tested Application	ELISA, IHC-P, Neut, WB
Host	Rabbit
Clonality	Polyclonal
Isotype	IgG
Target Name	TIMP1
Species	Human
Immunogen	E.coli derived Recombinant Human TIMP-1. (CTCVPPHPQT AFCNSDLVIR AKFVGTPEVN QTTLYQRYEI KMTKMYKGFQ ALGDAADIRF VYTPAMESVC GYFHRSHNRS EEFLIAGKLQ DGLLHITTCS FVAPWNSLSL AQRRTGFTKY TVGCEECTVF PCLSIPCKLQ SGTHCLWTDQ LLQGSEKGFQ SRHLACLPRE PGLCTWQSLR SQIA)
Conjugation	Un-conjugated
Alternate Names	Erythroid-potentiating activity; TIMP; Collagenase inhibitor; Fibroblast collagenase inhibitor; TIMP-1; EPO; CLGI; Tissue inhibitor of metalloproteinases 1; HCl; Metalloproteinase inhibitor 1; EPA

Application Instructions

Application table	Application	Dilution
	ELISA	Sandwich: 0.5 - 2.0 µg/ml with ARG56830 as a detection antibody
	IHC-P	0.1 µg/ml
	Neut	5.0 µg/ml (To yield [ND50] of the biological activity of Human TIMP - 1 (3.0 µg/ml))
	WB	0.1 - 0.2 µg/ml
Application Note	* The dilutions indicate recommended starting dilutions and the optimal dilutions or concentrations should be determined by the scientist.	

Properties

Form	Liquid
Purification	Affinity purification with immunogen.
Buffer	PBS (pH 7.2)
Concentration	1 mg/ml
Storage instruction	For continuous use, store undiluted antibody at 2-8°C for up to a week. For long-term storage, aliquot and store at -20°C or below. Storage in frost free freezers is not recommended. Avoid repeated freeze/thaw cycles. Suggest spin the vial prior to opening. The antibody solution should be gently mixed

before use.

Note

For laboratory research only, not for drug, diagnostic or other use.

Bioinformation

Database links

[GeneID: 7076 Human](#)

[Swiss-port # P01033 Human](#)

Gene Symbol

TIMP1

Gene Full Name

TIMP metalloproteinase inhibitor 1

Background

This gene belongs to the TIMP gene family. The proteins encoded by this gene family are natural inhibitors of the matrix metalloproteinases (MMPs), a group of peptidases involved in degradation of the extracellular matrix. In addition to its inhibitory role against most of the known MMPs, the encoded protein is able to promote cell proliferation in a wide range of cell types, and may also have an anti-apoptotic function. Transcription of this gene is highly inducible in response to many cytokines and hormones. In addition, the expression from some but not all inactive X chromosomes suggests that this gene inactivation is polymorphic in human females. This gene is located within intron 6 of the synapsin I gene and is transcribed in the opposite direction. [provided by RefSeq, Jul 2008]

Function

Metalloproteinase inhibitor that functions by forming one to one complexes with target metalloproteinases, such as collagenases, and irreversibly inactivates them by binding to their catalytic zinc cofactor. Acts on MMP1, MMP2, MMP3, MMP7, MMP8, MMP9, MMP10, MMP11, MMP12, MMP13 and MMP16. Does not act on MMP14. Also functions as a growth factor that regulates cell differentiation, migration and cell death and activates cellular signaling cascades via CD63 and ITGB1. Plays a role in integrin signaling. Mediates erythropoiesis in vitro; but, unlike IL3, it is species-specific, stimulating the growth and differentiation of only human and murine erythroid progenitors. [UniProt]

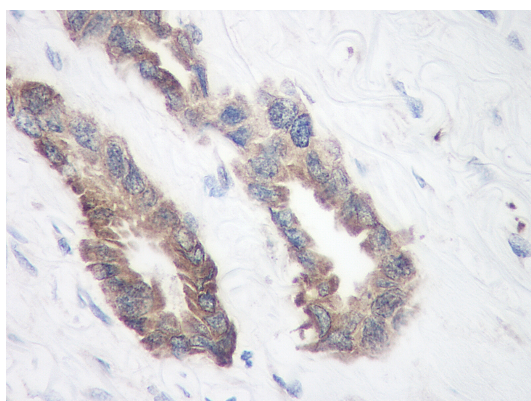
Calculated Mw

23 kDa

PTM

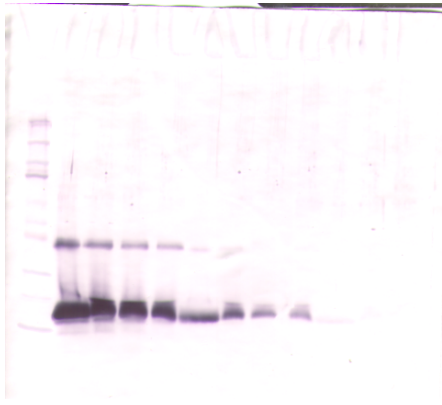
The activity of TIMP1 is dependent on the presence of disulfide bonds.
N-glycosylated.

Images



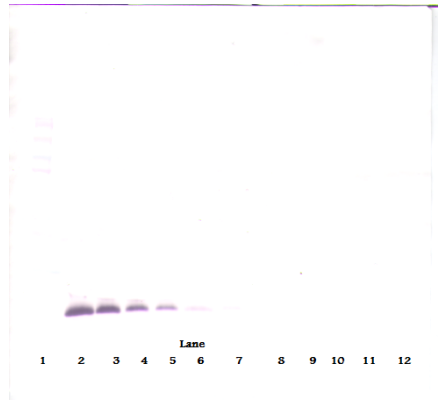
ARG56720 anti-TIMP1 antibody IHC-P image

Immunohistochemistry: Formalin-fixed and paraffin-embedded sections of Human breast invasive ductal carcinoma. The recommended ARG56720 anti-TIMP1 antibody concentration is 0.1 µg/ml with an overnight incubation at 4°C. An HRP-labeled polymer detection system was used with a DAB chromogen. Antigen Retrieval: Incubate tissue section in a buffer (proteinase K) at RT for 10 min.



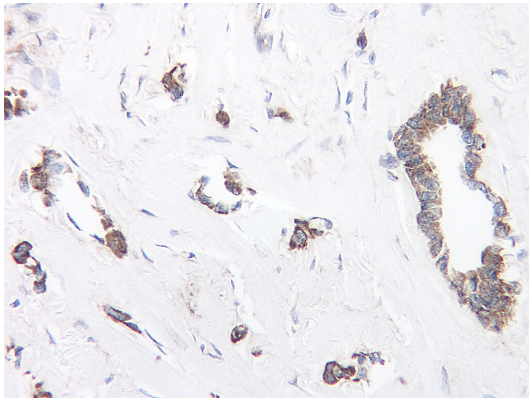
ARG56720 anti-TIMP1 antibody WB image

Western blot: 250 - 0.24 ng of Human TIMP-1 stained with ARG56720 anti-TIMP1 antibody, under reducing conditions.



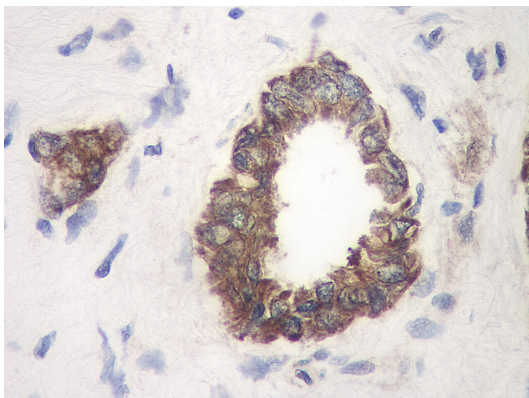
ARG56720 anti-TIMP1 antibody WB image

Western blot: 250 - 0.24 ng of Human TIMP-1 stained with ARG56720 anti-TIMP1 antibody, under reducing conditions.



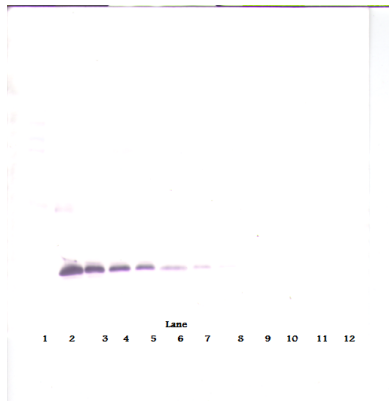
ARG56720 anti-TIMP1 antibody IHC-P image

Immunohistochemistry: Formalin-fixed and paraffin-embedded sections of Human breast invasive ductal carcinoma. The recommended ARG56720 anti-TIMP1 antibody concentration is 0.1 $\mu\text{g}/\text{ml}$ with an overnight incubation at 4°C. An HRP-labeled polymer detection system was used with a DAB chromogen. Antigen Retrieval: Incubate tissue section in a buffer (proteinase K) at RT for 10 min.



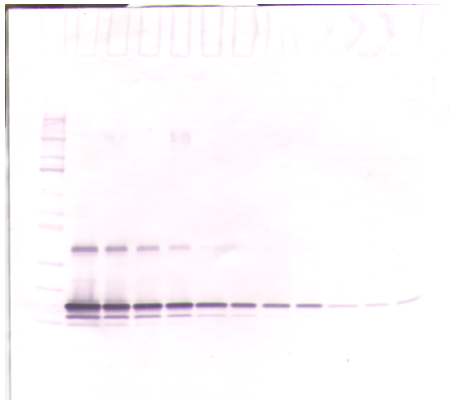
ARG56720 anti-TIMP1 antibody IHC-P image

Immunohistochemistry: Formalin-fixed and paraffin-embedded sections of Human breast invasive ductal carcinoma. The recommended ARG56720 anti-TIMP1 antibody concentration is 0.1 $\mu\text{g}/\text{ml}$ with an overnight incubation at 4°C. An HRP-labeled polymer detection system was used with a DAB chromogen. Antigen Retrieval: Incubate tissue section in a buffer (proteinase K) at RT for 10 min.



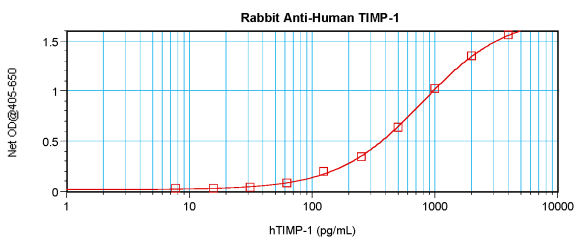
ARG56720 anti-TIMP1 antibody WB image

Western blot: 250 - 0.24 ng of Human TIMP-1 stained with ARG56720 anti-TIMP1 antibody, under non-reducing conditions.



ARG56720 anti-TIMP1 antibody WB image

Western blot: 250 - 0.24 ng of Human TIMP-1 stained with ARG56720 anti-TIMP1 antibody, under non-reducing conditions.



ARG56720 anti-TIMP1 antibody standard curve image

Sandwich ELISA: ARG56720 anti-TIMP1 antibody as a capture antibody at 0.5 - 2.0 $\mu\text{g}/\text{ml}$ combined with ARG56830 anti-TIMP-1 antibody (Biotin) as a detection antibody. Results of a typical standard run with optical density.