

ARG56728 anti-CXCL10 / IP10 antibody (Biotin)

Package: 50 µg
Store at: 4°C

Summary

Product Description	Biotin-conjugated Rabbit Polyclonal antibody recognizes CXCL10 / IP10
Tested Reactivity	Hu
Tested Application	ELISA, WB
Host	Rabbit
Clonality	Polyclonal
Isotype	IgG
Target Name	CXCL10 / IP10
Species	Human
Immunogen	E.coli derived Recombinant Human IP10 (CXCL10). (VPLSRTVRCT CISISNPVN PRSLEKLEII PASQFCPRVE IIATMKKKGE KRCLNPESKA IKNLLKAVSK ERSKRSP)
Conjugation	Biotin
Alternate Names	gIP-10; INP10; 10 kDa interferon gamma-induced protein; IP-10; C-X-C motif chemokine 10; 1-73; Small-inducible cytokine B10; IFI10; Gamma-IP10; SCYB10; crg-2; C7; mob-1

Application Instructions

Application table	Application	Dilution
	ELISA	Direct: 0.25 - 1.0 µg/ml Sandwich: 0.25 - 1.0 µg/ml with ARG56614 as a capture antibody
	WB	0.1 - 0.2 µg/ml
Application Note	* The dilutions indicate recommended starting dilutions and the optimal dilutions or concentrations should be determined by the scientist.	

Properties

Form	Liquid
Purification	Purified by affinity chromatography.
Buffer	PBS (pH 7.2)
Concentration	1 mg/ml
Storage instruction	Aliquot and store in the dark at 2-8°C. Keep protected from prolonged exposure to light. Avoid repeated freeze/thaw cycles. Suggest spin the vial prior to opening. The antibody solution should be gently mixed before use.
Note	For laboratory research only, not for drug, diagnostic or other use.

Bioinformation

Database links

[GeneID: 3627 Human](#)

[Swiss-port # P02778 Human](#)

Gene Symbol

CXCL10

Gene Full Name

chemokine (C-X-C motif) ligand 10

Background

This antimicrobial gene encodes a chemokine of the CXC subfamily and ligand for the receptor CXCR3. Binding of this protein to CXCR3 results in pleiotropic effects, including stimulation of monocytes, natural killer and T-cell migration, and modulation of adhesion molecule expression. [provided by RefSeq, Sep 2014]

Function

Chemotactic for monocytes and T-lymphocytes. Binds to CXCR3. [UniProt]

Highlight

Related products:

[CXCL10 antibodies](#); [CXCL10 ELISA Kits](#); [CXCL10 recombinant proteins](#); [Anti-Rabbit IgG secondary antibodies](#);

Related news:

[circNDUFB2, a circular RNA \(circRNA\), activates anti-tumor immunity](#)

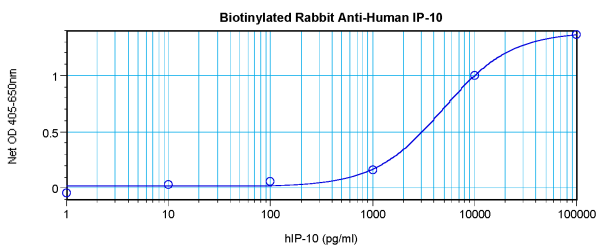
Calculated Mw

11 kDa

PTM

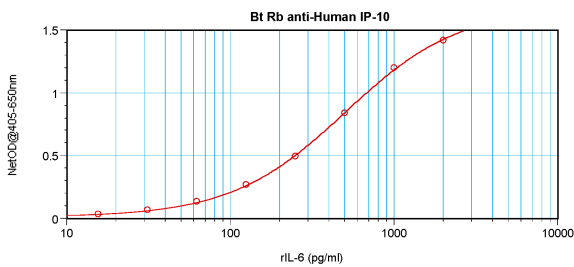
CXCL10(1-73) is produced by proteolytic cleavage after secretion from keratinocytes.

Images



ARG56728 anti-CXCL10 / IP10 antibody (Biotin) standard curve image

Direct ELISA: ARG56728 anti-CXCL10 / IP10 antibody (Biotin) at 0.25 - 1.0 µg/ml results of a typical standard run with optical density.



ARG56728 anti-CXCL10 / IP10 antibody (Biotin) standard curve image

Sandwich ELISA: ARG56728 anti-CXCL10 / IP10 antibody (Biotin) as a detection antibody at 0.25 - 1.0 µg/ml combined with ARG56614 anti-CXCL10 / IP10 antibody as a capture antibody. Results of a typical standard run with optical density.