

ARG56745 anti-IL12 antibody (Biotin)

Package: 50 µg
Store at: 4°C

Summary

Product Description	Biotin-conjugated Goat Polyclonal antibody recognizes IL12
Tested Reactivity	Hu
Tested Application	ELISA, WB
Host	Goat
Clonality	Polyclonal
Isotype	IgG
Target Name	IL12
Species	Human
Immunogen	CHO cells derived Recombinant Human IL-12. (p35 Subunit: RNL PVA TPD PGMFPCL HHSQNLLRAV SNMLQKARQT LEFYPCTSEE IDHEDITKDK TSTVEACLPL ELTKNESCLN SRETSFITNG SCLASRKTSF MMALCLSSIY EDLKMVQVEF KTMNAKLLMD PKRQIFLDQN MLAVIDELMQ ALNFNSETVP QKSSLEEDPF YKTKIKLCIL LHAFRIRAVT IDRVMSYLN S p40 Subunit: IWELKK DVYVVELDWY PDAPGEMVVL TCDTPEEDGI TWTL DQSSEV LGSGKTLTIQ VKEFGDAGQY TCHKGGEVLS HSLLLHKKE DGIWSTDILK DQKEPKNTF LRCEAKNYSR RFTCWWLTI STDLTFSVKS SRGSSDPQGV TCGAATLSAE RVRGDNKEYE YSVEQEDSA CPAAEESLPI EVMVDAVHKL KYENYTSSFF IRDIKPDPP KNLQLKPLKN SRQVEVSWEY PDTWSTPHSY FSLTFCVQVQ GKSKREKKDR VFTDKTSATV ICRKNASISV RAQDRYSSS WSEWASVPCS)
Conjugation	Biotin
Alternate Names	CLMF; Cytotoxic lymphocyte maturation factor 35 kDa subunit; NFSK; NK cell stimulatory factor chain 1; CLMF p35; NKSF1; IL-12 subunit p35; IL-12A; Interleukin-12 subunit alpha; P35

Application Instructions

Application table	Application	Dilution
	ELISA	Direct: 0.25 - 1.0 µg/ml Sandwich: 0.25 - 1.0 µg/ml with ARG56635 as a capture antibody
	WB	0.1 - 0.2 µg/ml
Application Note	* The dilutions indicate recommended starting dilutions and the optimal dilutions or concentrations should be determined by the scientist.	

Properties

Form	Liquid
Purification	Purified by affinity chromatography.
Buffer	PBS (pH 7.2)
Concentration	1 mg/ml
Storage instruction	Aliquot and store in the dark at 2-8°C. Keep protected from prolonged exposure to light. Avoid

repeated freeze/thaw cycles. Suggest spin the vial prior to opening. The antibody solution should be gently mixed before use.

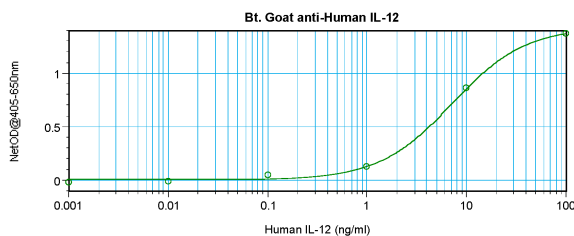
Note

For laboratory research only, not for drug, diagnostic or other use.

Bioinformation

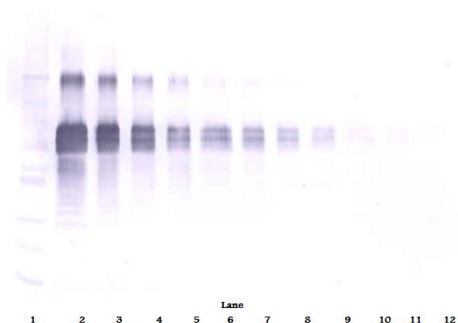
Database links	GeneID: 3592 Human Swiss-port # P29459 Human
Gene Symbol	IL12A
Gene Full Name	interleukin 12A
Background	This gene encodes a subunit of a cytokine that acts on T and natural killer cells, and has a broad array of biological activities. The cytokine is a disulfide-linked heterodimer composed of the 35-kD subunit encoded by this gene, and a 40-kD subunit that is a member of the cytokine receptor family. This cytokine is required for the T-cell-independent induction of interferon (IFN)-gamma, and is important for the differentiation of both Th1 and Th2 cells. The responses of lymphocytes to this cytokine are mediated by the activator of transcription protein STAT4. Nitric oxide synthase 2A (NOS2A/NOS2) is found to be required for the signaling process of this cytokine in innate immunity. [provided by RefSeq, Jul 2008]
Function	Cytokine that can act as a growth factor for activated T and NK cells, enhance the lytic activity of NK/lymphokine-activated Killer cells, and stimulate the production of IFN-gamma by resting PBMC. [UniProt]
Calculated Mw	25 kDa

Images



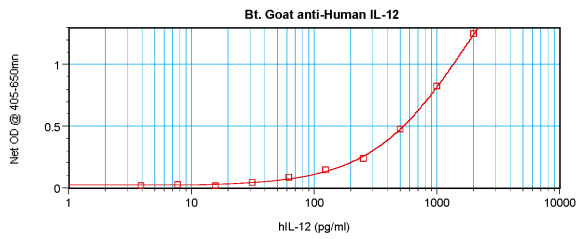
ARG56745 anti-IL12 antibody (Biotin) standard curve image

Direct ELISA: ARG56745 anti-IL12 antibody (Biotin) at 0.25 - 1.0 µg/ml results of a typical standard run with optical density.



ARG56745 anti-IL12 antibody (Biotin) WB image

Western blot: 250 - 0.24 ng of Human IL-12 stained with ARG56745 anti-IL12 antibody (Biotin), under non-reducing conditions.



ARG56745 anti-IL12 antibody (Biotin) standard curve image

Sandwich ELISA: ARG56745 anti-IL12 antibody (Biotin) as a detection antibody at 0.25 - 1.0 $\mu\text{g/ml}$ combined with ARG56635 anti-IL12 antibody as a capture antibody. Results of a typical standard run with optical density.