

**ARG56785**  
**anti-CXCL16 antibody (Biotin)**Package: 50 µg  
Store at: 4°C

### Summary

Product Description	Biotin-conjugated Goat Polyclonal antibody recognizes CXCL16
Tested Reactivity	Hu, Ms
Tested Application	ELISA, WB
Host	Goat
Clonality	Polyclonal
Isotype	IgG
Target Name	CXCL16
Species	Mouse
Immunogen	E.coli derived Recombinant Mouse CXCL16. (NQGSVAGSCS CDRTISSGTQ IPQGTLDHIR KYLKAFHRCP FFIRFQLQSK SVCGGSQDQW VRELVDCKER KECGTGHGKS FHHQKHLF)
Conjugation	Biotin
Alternate Names	Transmembrane chemokine CXCL16; CXCLG16; C-X-C motif chemokine 16; SRPSOX; Scavenger receptor for phosphatidylserine and oxidized low density lipoprotein; SR-PSOX; Small-inducible cytokine B16

### Application Instructions

Application table	Application	Dilution
	ELISA	Direct: 0.25 - 1.0 µg/ml Sandwich: 0.25 - 1.0 µg/ml with ARG56675 as a capture antibody
	WB	0.1 - 0.2 µg/ml
Application Note	* The dilutions indicate recommended starting dilutions and the optimal dilutions or concentrations should be determined by the scientist.	

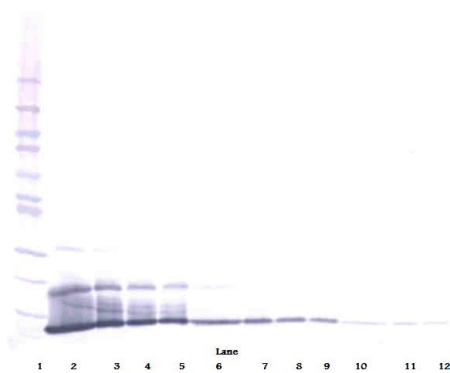
### Properties

Form	Liquid
Purification	Purified by affinity chromatography.
Buffer	PBS (pH 7.2)
Concentration	1 mg/ml
Storage instruction	Aliquot and store in the dark at 2-8°C. Keep protected from prolonged exposure to light. Avoid repeated freeze/thaw cycles. Suggest spin the vial prior to opening. The antibody solution should be gently mixed before use.
Note	For laboratory research only, not for drug, diagnostic or other use.

## Bioinformation

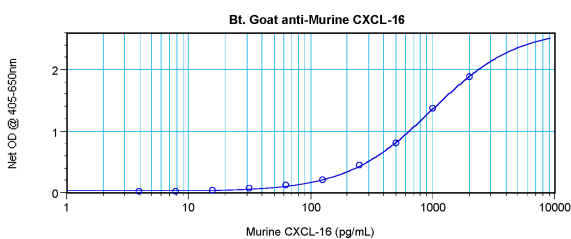
Database links	<a href="#">GeneID: 58191 Human</a> <a href="#">GeneID: 66102 Mouse</a> <a href="#">Swiss-port # Q8BSU2 Mouse</a> <a href="#">Swiss-port # Q9H2A7 Human</a>
Gene Symbol	Cxcl16
Gene Full Name	chemokine (C-X-C motif) ligand 16
Function	Acts as a scavenger receptor on macrophages, which specifically binds to OxLDL (oxidized low density lipoprotein), suggesting that it may be involved in pathophysiology such as atherogenesis (By similarity). Induces a strong chemotactic response. Induces calcium mobilization. Binds to CXCR6/Bonzo. [UniProt]
Calculated Mw	28 kDa
PTM	Glycosylated.

## Images



ARG56785 anti-CXCL16 antibody (Biotin) WB image

Western blot: 250 - 0.24 ng of Mouse CXCL16 stained with ARG56785 anti-CXCL16 antibody (Biotin), under reducing conditions.

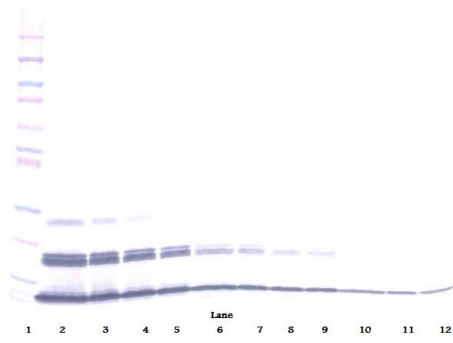


ARG56785 anti-CXCL16 antibody (Biotin) standard curve image

Direct ELISA: ARG56785 anti-CXCL16 antibody (Biotin) at 0.25 - 1.0  $\mu$ g/ml results of a typical standard run with optical density.

### ARG56785 anti-CXCL16 antibody (Biotin) WB image

Western blot: 250 - 0.24 ng of Mouse CXCL16 stained with ARG56785 anti-CXCL16 antibody (Biotin), under non-reducing conditions.



### ARG56785 anti-CXCL16 antibody (Biotin) standard curve image

Sandwich ELISA: ARG56785 anti-CXCL16 antibody (Biotin) as a detection antibody at 0.25 - 1.0 µg/ml combined with ARG56675 anti-CXCL16 antibody as a capture antibody. Results of a typical standard run with optical density.

