

ARG56845 anti-STIM2 antibody

Package: 50 µg
Store at: -20°C

Summary

Product Description	Rabbit Polyclonal antibody recognizes STIM2
Tested Reactivity	Hu, Ms
Predict Reactivity	Rat
Tested Application	ICC/IF, IHC-P, WB
Host	Rabbit
Clonality	Polyclonal
Isotype	IgG
Target Name	STIM2
Species	Human
Immunogen	Synthetic peptide (18 aa) within the last 50 aa of Human STIM2.
Conjugation	Un-conjugated
Alternate Names	Stromal interaction molecule 2

Application Instructions

Application table	Application	Dilution
	ICC/IF	20 µg/ml
	IHC-P	2.5 µg/ml
	WB	0.5 - 1 µg/ml
Application Note	* The dilutions indicate recommended starting dilutions and the optimal dilutions or concentrations should be determined by the scientist.	
Positive Control	A-20 cell lysate	

Properties

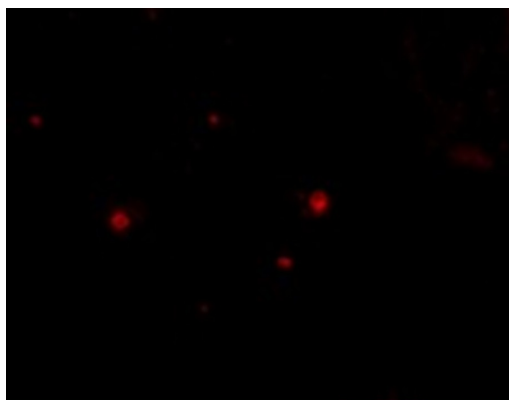
Form	Liquid
Purification	Affinity purification with immunogen.
Buffer	PBS and 0.02% Sodium azide.
Preservative	0.02% Sodium azide
Concentration	1 mg/ml
Storage instruction	For continuous use, store undiluted antibody at 2-8°C for up to a week. For long-term storage, aliquot and store at -20°C or below. Storage in frost free freezers is not recommended. Avoid repeated freeze/thaw cycles. Suggest spin the vial prior to opening. The antibody solution should be gently mixed before use.

Note For laboratory research only, not for drug, diagnostic or other use.

Bioinformation

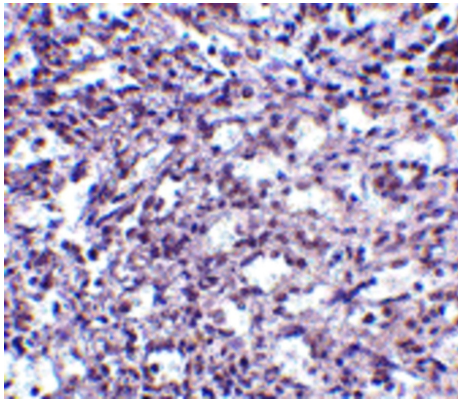
Database links	GeneID: 116873 Mouse GeneID: 57620 Human Swiss-port # P83093 Mouse Swiss-port # Q9P246 Human
Gene Symbol	STIM2
Gene Full Name	stromal interaction molecule 2
Background	This gene is a member of the stromal interaction molecule (STIM) family and likely arose, along with related family member STIM1, from a common ancestral gene. The encoded protein functions to regulate calcium concentrations in the cytosol and endoplasmic reticulum, and is involved in the activation of plasma membrane Orai Ca(2+) entry channels. This gene initiates translation from a non-AUG (UUG) start site. A signal peptide is cleaved from the resulting protein. Multiple transcript variants result from alternative splicing. [provided by RefSeq, Dec 2009]
Function	Plays a role in mediating store-operated Ca(2+) entry (SOCE), a Ca(2+) influx following depletion of intracellular Ca(2+) stores. Functions as a highly sensitive Ca(2+) sensor in the endoplasmic reticulum which activates both store-operated and store-independent Ca(2+)-influx. Regulates basal cytosolic and endoplasmic reticulum Ca(2+) concentrations. Upon mild variations of the endoplasmic reticulum Ca(2+) concentration, translocates from the endoplasmic reticulum to the plasma membrane where it probably activates the Ca(2+) release-activated Ca(2+) (CRAC) channels ORAI1, ORAI2 and ORAI3. May inhibit STIM1-mediated Ca(2+) influx. [UniProt]
Calculated Mw	84 kDa
PTM	Glycosylated. Phosphorylated predominantly on Ser residues.

Images



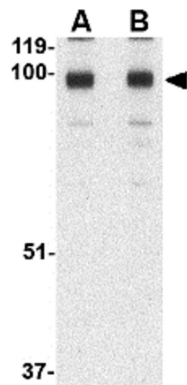
ARG56845 anti-STIM2 antibody ICC/IF image

Immunofluorescence: Human Spleen cells stained with ARG56845 anti-STIM2 antibody at 20 µg/ml dilution.



ARG56845 anti-STIM2 antibody IHC-P image

Immunohistochemistry: Human spleen tissue stained with ARG56845 anti-STIM2 antibody at 2.5 µg/ml dilution.



ARG56845 anti-STIM2 antibody WB image

Western blot: A-20 cell lysate stained with ARG56845 anti-STIM2 antibody at (A) 0.5 and (B) 1 µg/ml dilution.