

## ARG56850 anti-GPAT1 antibody

Package: 50 µg  
Store at: -20°C

### Summary

Product Description	Rabbit Polyclonal antibody recognizes GPAT1
Tested Reactivity	Ms, Rat
Predict Reactivity	Hu
Tested Application	ICC/IF, IHC-P, WB
Specificity	At least four isoforms of GPAT1 are known to exist. This antibody will detect only the two largest isoforms.
Host	Rabbit
Clonality	Polyclonal
Isotype	IgG
Target Name	GPAT1
Species	Human
Immunogen	Synthetic peptide (15 aa) within aa. 730-780 of the Human GPAT1.
Conjugation	Un-conjugated
Alternate Names	GPAT; GPAT-1; Glycerol-3-phosphate acyltransferase 1, mitochondrial; GPAT1; EC 2.3.1.15

### Application Instructions

Application table	Application	Dilution
	ICC/IF	20 µg/ml
	IHC-P	2.5 µg/ml
	WB	1 - 2 µg/ml
Application Note	* The dilutions indicate recommended starting dilutions and the optimal dilutions or concentrations should be determined by the scientist.	
Positive Control	Rat brain tissue lysate	

### Properties

Form	Liquid
Purification	Affinity purification with immunogen.
Buffer	PBS and 0.02% Sodium azide.
Preservative	0.02% Sodium azide
Concentration	1 mg/ml
Storage instruction	For continuous use, store undiluted antibody at 2-8°C for up to a week. For long-term storage, aliquot and store at -20°C or below. Storage in frost free freezers is not recommended. Avoid repeated

freeze/thaw cycles. Suggest spin the vial prior to opening. The antibody solution should be gently mixed before use.

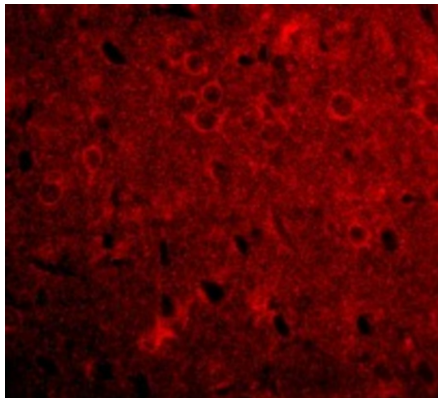
#### Note

For laboratory research only, not for drug, diagnostic or other use.

## Bioinformation

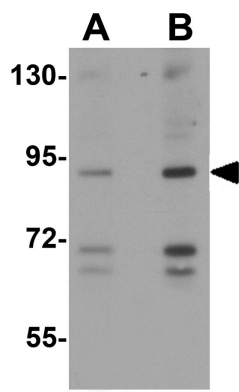
Database links	<a href="#">GeneID: 14732 Mouse</a> <a href="#">GeneID: 29653 Rat</a> <a href="#">Swiss-port # P97564 Rat</a> <a href="#">Swiss-port # Q61586 Mouse</a>
Gene Symbol	GPAM
Gene Full Name	glycerol-3-phosphate acyltransferase, mitochondrial
Background	This gene encodes a mitochondrial enzyme which prefers saturated fatty acids as its substrate for the synthesis of glycerolipids. This metabolic pathway's first step is catalyzed by the encoded enzyme. Two forms for this enzyme exist, one in the mitochondria and one in the endoplasmic reticulum. Two alternatively spliced transcript variants have been described for this gene. [provided by RefSeq, Oct 2011]
Function	Esterifies acyl-group from acyl-ACP to the sn-1 position of glycerol-3-phosphate, an essential step in glycerolipid biosynthesis. [UniProt]
Calculated Mw	94 kDa

## Images



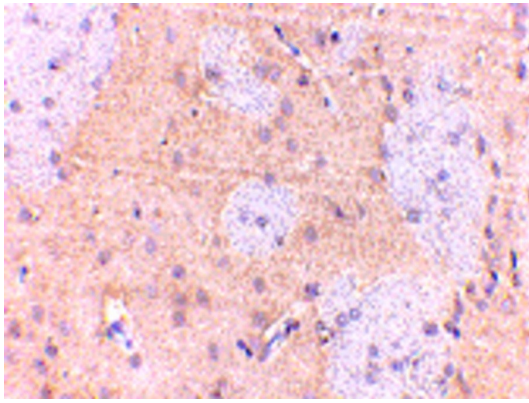
ARG56850 anti-GPAT1 antibody IHC-P image

Immunohistochemistry: Rat Brain tissue stained with ARG56850 anti-GPAT1 antibody at 20 µg/ml dilution.



ARG56850 anti-GPAT1 antibody WB image

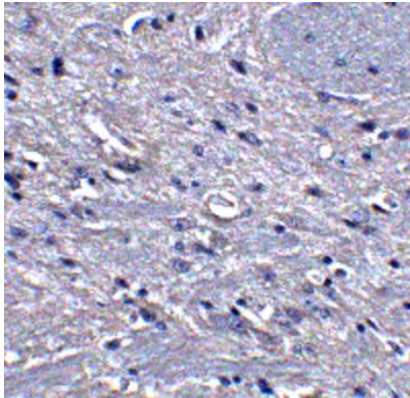
Western blot: Rat brain tissue lysate stained with ARG56850 anti-GPAT1 antibody at (A) 1 and (B) 2 µg/ml dilution.



ARG56850 anti-GPAT1 antibody IHC-P image

Immunohistochemistry: Rat brain stained with ARG56850 anti-GPAT1 antibody at 2.5  $\mu\text{g/ml}$  dilution.

---



ARG56850 anti-GPAT1 antibody IHC-P image

Immunohistochemistry: Mouse brain tissue stained with ARG56850 anti-GPAT1 antibody at 5  $\mu\text{g/ml}$  dilution.

---