

ARG56879 anti-MICB antibody

Package: 100 µl
Store at: -20°C

Summary

Product Description	Rabbit Polyclonal antibody recognizes MICB
Tested Reactivity	Hu
Tested Application	WB
Host	Rabbit
Clonality	Polyclonal
Isotype	IgG
Target Name	MICB
Species	Human
Immunogen	Recombinant protein of Human MICB.
Conjugation	Un-conjugated
Alternate Names	MHC class I polypeptide-related sequence B; MIC-B; PERB11.2

Application Instructions

Application table	Application	Dilution
	WB	1:500 - 1:1000
Application Note	* The dilutions indicate recommended starting dilutions and the optimal dilutions or concentrations should be determined by the scientist.	
Positive Control	NCI-H460	

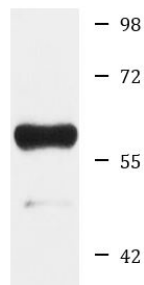
Properties

Form	Liquid
Purification	Affinity purification with immunogen.
Buffer	PBS (pH 7.3), 0.02% Sodium azide and 50% Glycerol.
Preservative	0.02% Sodium azide
Stabilizer	50% Glycerol
Storage instruction	For continuous use, store undiluted antibody at 2-8°C for up to a week. For long-term storage, aliquot and store at -20°C. Storage in frost free freezers is not recommended. Avoid repeated freeze/thaw cycles. Suggest spin the vial prior to opening. The antibody solution should be gently mixed before use.
Note	For laboratory research only, not for drug, diagnostic or other use.

Bioinformation

Database links	GeneID: 4277 Human Swiss-port # Q29980 Human
Gene Symbol	MICB
Gene Full Name	MHC class I polypeptide-related sequence B
Background	This gene encodes a heavily glycosylated protein which is a ligand for the NKG2D type II receptor. Binding of the ligand activates the cytolytic response of natural killer (NK) cells, CD8 alphabeta T cells, and gammadelta T cells which express the receptor. This protein is stress-induced and is similar to MHC class I molecules; however, it does not associate with beta-2-microglobulin or bind peptides. Alternative splicing results in multiple transcript variants. [provided by RefSeq, Jan 2014]
Function	Seems to have no role in antigen presentation. Acts as a stress-induced self-antigen that is recognized by gamma delta T cells. Ligand for the KLRK1/NKG2D receptor. Binding to KLRK1 leads to cell lysis. [UniProt]
Highlight	Related products: MICB antibodies ; MICB ELISA Kits ; Anti-Rabbit IgG secondary antibodies ; Related news: Time to fight cancer by NK cells
Calculated Mw	43 kDa
PTM	Proteolytically cleaved and released from the cell surface of tumor cells.

Images



NCI-H460

ARG56879 anti-MICB antibody WB image

Western blot: NCI-H460 cell lysate stained with ARG56879 anti-MICB antibody.