

ARG56891 anti-SERPINF1 / PEDF antibody

Package: 100 µl
Store at: -20°C

Summary

| | |
|---------------------|--|
| Product Description | Rabbit Polyclonal antibody recognizes SERPINF1 / PEDF |
| Tested Reactivity | Hu, Ms |
| Tested Application | WB |
| Host | Rabbit |
| Clonality | Polyclonal |
| Isotype | IgG |
| Target Name | SERPINF1 / PEDF |
| Species | Human |
| Immunogen | Recombinant fusion protein corresponding to aa. 1-200 of Human SERPINF1 / PEDF (NP_002606.3). |
| Conjugation | Un-conjugated |
| Alternate Names | OI12; Pigment epithelium-derived factor; Cell proliferation-inducing gene 35 protein; Serpin F1; EPC-1; PEDF; PIG35; OI6 |

Application Instructions

| Application table | Application | Dilution |
|-------------------|--|----------------|
| | WB | 1:500 - 1:2000 |
| Application Note | * The dilutions indicate recommended starting dilutions and the optimal dilutions or concentrations should be determined by the scientist. | |
| Positive Control | Mouse kidney and A375 | |
| Observed Size | 53 kDa | |

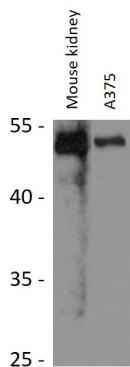
Properties

| | |
|---------------------|---|
| Form | Liquid |
| Purification | Affinity purified. |
| Buffer | PBS (pH 7.3), 0.02% Sodium azide and 50% Glycerol. |
| Preservative | 0.02% Sodium azide |
| Stabilizer | 50% Glycerol |
| Storage instruction | For continuous use, store undiluted antibody at 2-8°C for up to a week. For long-term storage, aliquot and store at -20°C. Storage in frost free freezers is not recommended. Avoid repeated freeze/thaw cycles. Suggest spin the vial prior to opening. The antibody solution should be gently mixed before use. |
| Note | For laboratory research only, not for drug, diagnostic or other use. |

Bioinformation

| | |
|-----------------------|--|
| Gene Symbol | SERPINF1 |
| Gene Full Name | serpin peptidase inhibitor, clade F (alpha-2 antiplasmin, pigment epithelium derived factor), member 1 |
| Background | The protein encoded by this gene is a member of the serpin family, although it does not display the serine protease inhibitory activity shown by many of the other serpin family members. The encoded protein is secreted and strongly inhibits angiogenesis. In addition, this protein is a neurotrophic factor involved in neuronal differentiation in retinoblastoma cells.[provided by RefSeq, Mar 2011] |
| Function | Neurotrophic protein; induces extensive neuronal differentiation in retinoblastoma cells. Potent inhibitor of angiogenesis. As it does not undergo the S (stressed) to R (relaxed) conformational transition characteristic of active serpins, it exhibits no serine protease inhibitory activity. [UniProt] |
| Calculated Mw | 46 kDa |
| PTM | The N-terminus is blocked. Extracellular phosphorylation enhances antiangiogenic activity. N- and O-glycosylated. O-glycosylated with a core 1 or possibly core 8 glycan. [UniProt] |
| Cellular Localization | Secreted. Melanosome. Note=Enriched in stage I melanosomes. [UniProt] |

Images



ARG56891 anti-SERPINF1 / PEDF antibody WB image

Western blot: 25 µg of Mouse kidney and A375 cell lysates stained with ARG56891 anti-SERPINF1 / PEDF antibody at 1:1000 dilution.