

ARG56911 anti-TPD52L1 / D53 antibody [d1C5]

Package: 50 µl
Store at: -20°C

Summary

Product Description	Mouse Monoclonal antibody [d1C5] recognizes TPD52L1 / D53
Tested Reactivity	Hu
Tested Application	FACS, IHC-P
Host	Mouse
Clonality	Monoclonal
Clone	d1C5
Isotype	IgG2b, kappa
Target Name	TPD52L1 / D53
Species	Human
Immunogen	Recombinant fragment around aa. 1-131 of Human TPD52L1 / D53.
Conjugation	Un-conjugated
Alternate Names	Tumor protein D53; Tumor protein D52-like 1; D53; hD53

Application Instructions

Application table	Application	Dilution
	FACS	Assay-dependent
	IHC-P	Assay-dependent
Application Note	* The dilutions indicate recommended starting dilutions and the optimal dilutions or concentrations should be determined by the scientist.	

Properties

Form	Liquid
Purification	Purification with Protein G.
Buffer	PBS (pH 7.4), 0.02% Sodium azide and 10% Glycerol.
Preservative	0.02% Sodium azide
Stabilizer	10% Glycerol
Concentration	1 mg/ml
Storage instruction	For continuous use, store undiluted antibody at 2-8°C for up to a week. For long-term storage, aliquot and store at -20°C. Storage in frost free freezers is not recommended. Avoid repeated freeze/thaw cycles. Suggest spin the vial prior to opening. The antibody solution should be gently mixed before use.
Note	For laboratory research only, not for drug, diagnostic or other use.

Bioinformation

Database links

[GeneID: 7164 Human](#)

[Swiss-port # Q16890 Human](#)

Gene Symbol

TPD52L1

Gene Full Name

tumor protein D52-like 1

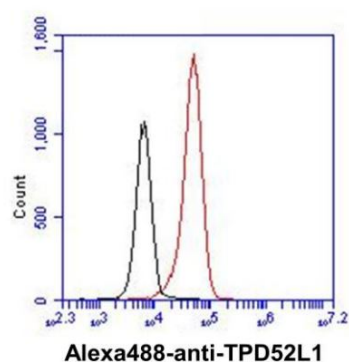
Background

This gene encodes a member of the tumor protein D52 (TPD52) family. The encoded protein contains a coiled-coil domain and may form homo- or hetero-dimer with TPD52 family members. The protein is reported to be involved in cell proliferation and calcium signaling. It also interacts with the mitogen-activated protein kinase kinase kinase 5 (MAP3K5/ASK1) and positively regulates MAP3K5-induced apoptosis. Multiple alternatively spliced transcript variants have been observed, but the full-length nature of some variants has not yet been determined. [provided by RefSeq, Jul 2008]

Calculated Mw

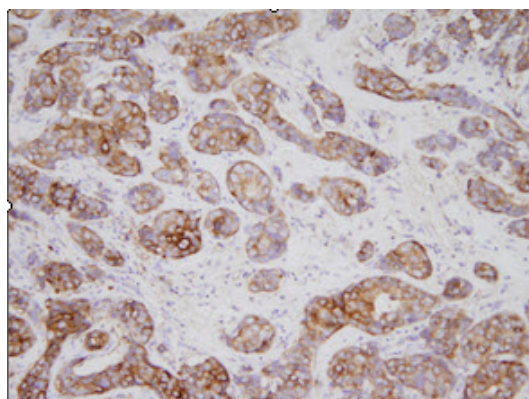
22 kDa

Images



ARG56911 anti-TPD52L1 / D53 antibody [d1C5] FACS image

Flow Cytometry: A431 cell line stained with ARG56911 anti-TPD52L1 / D53 antibody [d1C5] at 2-5 μ g for 1×10^6 cells (red line). Secondary antibody: Goat anti-Mouse IgG Alexa fluor 488 conjugate. Isotype control antibody was Mouse IgG (black line).



ARG56911 anti-TPD52L1 / D53 antibody [d1C5] IHC-P image

Immunohistochemistry: Paraffin-embedded sections of Human gastric cancer tissues stained with ARG56911 anti-TPD52L1 / D53 antibody [d1C5] at 1:200 for o/n at RT.