

## ARG56914 anti-RASSF1A antibody [3F3]

Package: 50 µl  
Store at: -20°C

### Summary

Product Description	Mouse Monoclonal antibody [3F3] recognizes RASSF1A
Tested Reactivity	Hu
Tested Application	ICC/IF, WB
Host	Mouse
Clonality	Monoclonal
Clone	3F3
Isotype	IgG1, kappa
Target Name	RASSF1A
Species	Human
Immunogen	Recombinant fragment around aa. 1-340 of Human RASSF1A.
Conjugation	Un-conjugated
Alternate Names	NORE2A; RASSF1A; REH3P21; Ras association domain-containing protein 1; 123F2; RDA32

### Application Instructions

Application table	Application	Dilution
	ICC/IF	Assay-dependent
	WB	Assay-dependent
Application Note	* The dilutions indicate recommended starting dilutions and the optimal dilutions or concentrations should be determined by the scientist.	

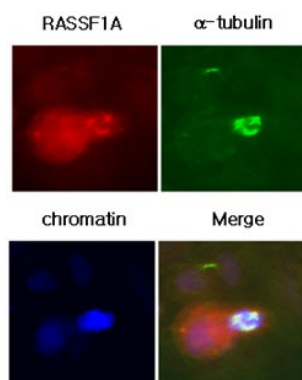
### Properties

Form	Liquid
Purification	Purification with Protein G.
Buffer	PBS (pH 7.4), 0.02% Sodium azide and 10% Glycerol.
Preservative	0.02% Sodium azide
Stabilizer	10% Glycerol
Concentration	1 mg/ml
Storage instruction	For continuous use, store undiluted antibody at 2-8°C for up to a week. For long-term storage, aliquot and store at -20°C. Storage in frost free freezers is not recommended. Avoid repeated freeze/thaw cycles. Suggest spin the vial prior to opening. The antibody solution should be gently mixed before use.
Note	For laboratory research only, not for drug, diagnostic or other use.

## Bioinformation

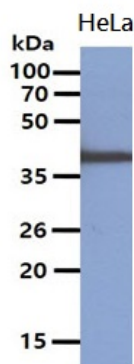
Database links	<a href="#">GeneID: 11186 Human</a> <a href="#">Swiss-port # Q9NS23 Human</a>
Gene Symbol	RASSF1
Gene Full Name	Ras association (RalGDS/AF-6) domain family member 1
Background	This gene encodes a protein similar to the RAS effector proteins. Loss or altered expression of this gene has been associated with the pathogenesis of a variety of cancers, which suggests the tumor suppressor function of this gene. The inactivation of this gene was found to be correlated with the hypermethylation of its CpG-island promoter region. The encoded protein was found to interact with DNA repair protein XPA. The protein was also shown to inhibit the accumulation of cyclin D1, and thus induce cell cycle arrest. Several alternatively spliced transcript variants of this gene encoding distinct isoforms have been reported. [provided by RefSeq, May 2011]
Function	Potential tumor suppressor. Required for death receptor-dependent apoptosis. Mediates activation of STK3/MST2 and STK4/MST1 during Fas-induced apoptosis by preventing their dephosphorylation. When associated with MOAP1, promotes BAX conformational change and translocation to mitochondrial membranes in response to TNF and TNFSF10 stimulation. Isoform A interacts with CDC20, an activator of the anaphase-promoting complex, APC, resulting in the inhibition of APC activity and mitotic progression. Inhibits proliferation by negatively regulating cell cycle progression at the level of G1/S-phase transition by regulating accumulation of cyclin D1 protein. Isoform C has been shown not to perform these roles, no function has been identified for this isoform. Isoform A disrupts interactions among MDM2, DAXX and USP7, thus contributing to the efficient activation of TP53 by promoting MDM2 self-ubiquitination in cell-cycle checkpoint control in response to DNA damage. [UniProt]
Calculated Mw	39 kDa

## Images



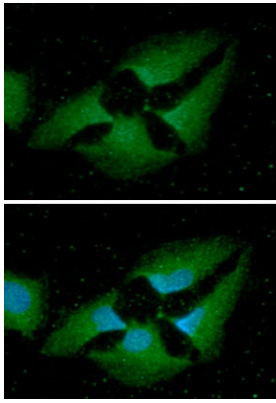
ARG56914 anti-RASSF1A antibody [3F3] ICC/IF image

Immunofluorescence: A431 cells were stained with ARG56914 anti-RASSF1A antibody [3F3].



ARG56914 anti-RASSF1A antibody [3F3] WB image

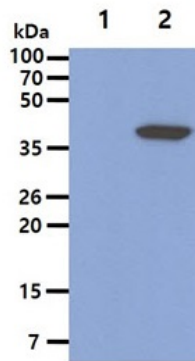
Western blot: 40  $\mu$ g of HeLa cell lysate stained with ARG56914 anti-RASSF1A antibody [3F3] at 1:500.



#### ARG56914 anti-RASSF1A antibody [3F3] ICC/IF image

Immunofluorescence: HeLa cell line stained with ARG56914 anti-RASSF1A antibody [3F3] at 1:100 (Green).

DAPI (Blue) for nucleus staining.



#### ARG56914 anti-RASSF1A antibody [3F3] WB image

Western blot: 5 µg of 1) 293T cell lysate, 2) RASSF1A Transfected 293T cell lysate stained with ARG56914 anti-RASSF1A antibody [3F3] at 1:500.