

ARG56919
anti-TLR7 antibody [4F4]Package: 50 µl
Store at: -20°C

Summary

Product Description	Mouse Monoclonal antibody [4F4] recognizes TLR7
Tested Reactivity	Hu
Tested Application	FACS, ICC/IF, WB
Host	Mouse
Clonality	Monoclonal
Clone	4F4
Isotype	IgG1, kappa
Target Name	TLR7
Species	Human
Immunogen	Recombinant fragment around aa. 451-500 of Human TLR7.
Conjugation	Un-conjugated
Alternate Names	TLR7-like; Toll-like receptor 7

Application Instructions

Application table	Application	Dilution
	FACS	Assay-dependent
	ICC/IF	Assay-dependent
	WB	1:500 - 1:2000
Application Note	* The dilutions indicate recommended starting dilutions and the optimal dilutions or concentrations should be determined by the scientist.	

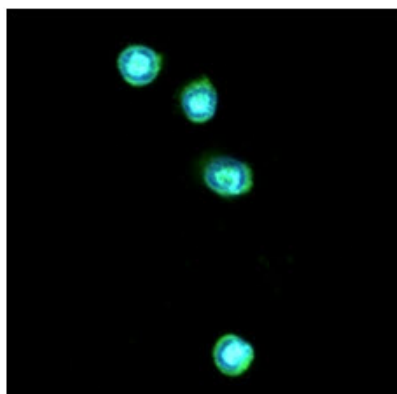
Properties

Form	Liquid
Purification	Purification with Protein G.
Buffer	PBS (pH 7.4), 0.02% Sodium azide and 10% Glycerol.
Preservative	0.02% Sodium azide
Stabilizer	10% Glycerol
Concentration	1 mg/ml
Storage instruction	For continuous use, store undiluted antibody at 2-8°C for up to a week. For long-term storage, aliquot and store at -20°C. Storage in frost free freezers is not recommended. Avoid repeated freeze/thaw cycles. Suggest spin the vial prior to opening. The antibody solution should be gently mixed before use.

Bioinformation

Database links	GeneID: 51284 Human Swiss-port # Q9NYK1 Human
Gene Symbol	TLR7
Gene Full Name	toll-like receptor 7
Background	The protein encoded by this gene is a member of the Toll-like receptor (TLR) family which plays a fundamental role in pathogen recognition and activation of innate immunity. TLRs are highly conserved from Drosophila to humans and share structural and functional similarities. They recognize pathogen-associated molecular patterns (PAMPs) that are expressed on infectious agents, and mediate the production of cytokines necessary for the development of effective immunity. The various TLRs exhibit different patterns of expression. This gene is predominantly expressed in lung, placenta, and spleen, and lies in close proximity to another family member, TLR8, on chromosome X. [provided by RefSeq, Jul 2008]
Function	Key component of innate and adaptive immunity. TLRs (Toll-like receptors) control host immune response against pathogens through recognition of molecular patterns specific to microorganisms. TLR7 is a nucleotide-sensing TLR which is activated by single-stranded RNA. Acts via MYD88 and TRAF6, leading to NF-kappa-B activation, cytokine secretion and the inflammatory response (By similarity). [UniProt]
Calculated Mw	121 kDa

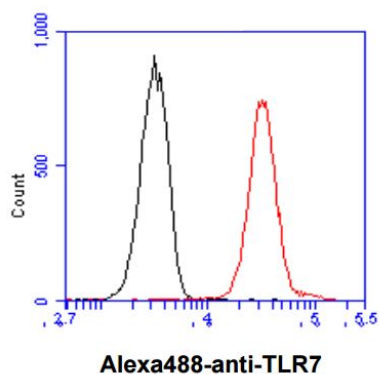
Images



ARG56919 anti-TLR7 antibody [4F4] ICC/IF image

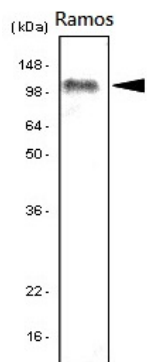
Immunofluorescence: THP-1 cell line stained with ARG56919 anti-TLR7 antibody [4F4] at 1:100 (Green).

DAPI (Blue) for nucleus staining.



ARG56919 anti-TLR7 antibody [4F4] FACS image

Flow Cytometry: THP-1 cell line stained with ARG56919 anti-TLR7 antibody [4F4] at 2-5 μ g for 1×10^6 cells (red line). Secondary antibody: Goat anti-Mouse IgG Alexa fluor 488 conjugate. Isotype control antibody was Mouse IgG (black line).



ARG56919 anti-TLR7 antibody [4F4] WB image

Western blot: 80 µg of Ramos cell lysates stained with ARG56919 anti-TLR7 antibody [4F4] at 1:1000. Arrow indicates TLR7 protein in Human Ramos cells.