

ARG56927 anti-Geminin antibody [2H7]

Package: 50 µl
Store at: -20°C

Summary

Product Description	Mouse Monoclonal antibody [2H7] recognizes Geminin
Tested Reactivity	Hu
Tested Application	WB
Host	Mouse
Clonality	Monoclonal
Clone	2H7
Isotype	IgG1, kappa
Target Name	Geminin
Species	Human
Immunogen	Recombinant fragment around aa. 1-209 of Human Geminin.
Conjugation	Un-conjugated
Alternate Names	Geminin; Gem

Application Instructions

Application table	Application	Dilution
	WB	1:500 - 1:1000
Application Note	* The dilutions indicate recommended starting dilutions and the optimal dilutions or concentrations should be determined by the scientist.	

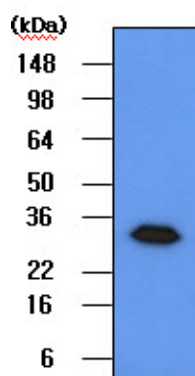
Properties

Form	Liquid
Purification	Purification with Protein G.
Buffer	PBS (pH 7.4), 0.02% Sodium azide and 10% Glycerol.
Preservative	0.02% Sodium azide
Stabilizer	10% Glycerol
Concentration	1 mg/ml
Storage instruction	For continuous use, store undiluted antibody at 2-8°C for up to a week. For long-term storage, aliquot and store at -20°C. Storage in frost free freezers is not recommended. Avoid repeated freeze/thaw cycles. Suggest spin the vial prior to opening. The antibody solution should be gently mixed before use.
Note	For laboratory research only, not for drug, diagnostic or other use.

Bioinformation

Database links	GeneID: 51053 Human Swiss-port # O75496 Human
Gene Symbol	GMNN
Gene Full Name	geminin, DNA replication inhibitor
Background	This gene encodes a protein that plays a critical role in cell cycle regulation. The encoded protein inhibits DNA replication by binding to DNA replication factor Cdt1, preventing the incorporation of minichromosome maintenance proteins into the pre-replication complex. The encoded protein is expressed during the S and G2 phases of the cell cycle and is degraded by the anaphase-promoting complex during the metaphase-anaphase transition. Increased expression of this gene may play a role in several malignancies including colon, rectal and breast cancer. Alternatively spliced transcript variants have been observed for this gene, and two pseudogenes of this gene are located on the short arm of chromosome 16. [provided by RefSeq, Oct 2011]
Function	<p>Inhibits DNA replication by preventing the incorporation of MCM complex into pre-replication complex (pre-RC). It is degraded during the mitotic phase of the cell cycle. Its destruction at the metaphase-anaphase transition permits replication in the succeeding cell cycle.</p> <p>Inhibits the transcriptional activity of a subset of Hox proteins, enrolling them in cell proliferative control. [UniProt]</p>
Calculated Mw	24 kDa
PTM	Phosphorylated during mitosis. Phosphorylation at Ser-184 by CK2 results in enhanced binding to Hox proteins and more potent inhibitory effect on Hox transcriptional activity.

Images



ARG56927 anti-Geminin antibody [2H7] WB image

Western blot: 50 µg of 293T cell lysates stained with ARG56927 anti-Geminin antibody [2H7] at 1:500.