

## ARG56930 anti-alpha + beta Synuclein antibody [3B6]

Package: 50 µl  
Store at: -20°C

### Summary

Product Description	Mouse Monoclonal antibody [3B6] recognizes alpha + beta Synuclein
Tested Reactivity	Hu, Ms, Rat
Tested Application	FACS, WB
Host	Mouse
Clonality	Monoclonal
Clone	3B6
Isotype	IgG1, kappa
Target Name	alpha + beta Synuclein
Species	Human
Immunogen	Recombinant fragment around aa. 119-140 of Human alpha+beta Synuclein.
Conjugation	Un-conjugated
Alternate Names	Non-A4 component of amyloid precursor; Alpha-synuclein; PARK4; PARK1; PD1; NACP; Non-A beta component of AD amyloid

### Application Instructions

Application table	Application	Dilution
	FACS	Assay-dependent
	WB	1:1000 - 1:2000
Application Note	* The dilutions indicate recommended starting dilutions and the optimal dilutions or concentrations should be determined by the scientist.	

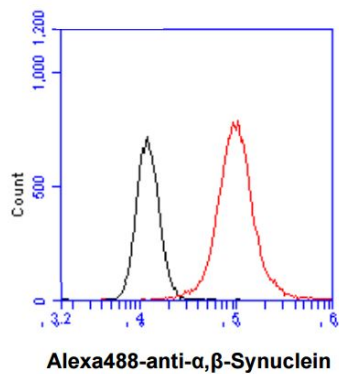
### Properties

Form	Liquid
Purification	Purification with Protein G.
Buffer	PBS (pH 7.4), 0.02% Sodium azide and 10% Glycerol.
Preservative	0.02% Sodium azide
Stabilizer	10% Glycerol
Concentration	1 mg/ml
Storage instruction	For continuous use, store undiluted antibody at 2-8°C for up to a week. For long-term storage, aliquot and store at -20°C. Storage in frost free freezers is not recommended. Avoid repeated freeze/thaw cycles. Suggest spin the vial prior to opening. The antibody solution should be gently mixed before use.
Note	For laboratory research only, not for drug, diagnostic or other use.

Bioinformation

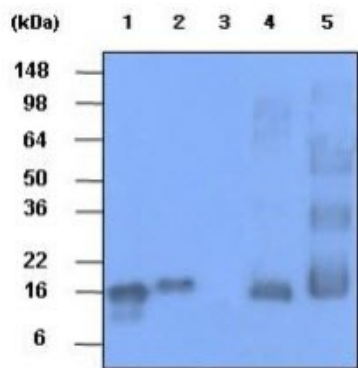
Gene Symbol	SNCA
Gene Full Name	synuclein, alpha (non A4 component of amyloid precursor)
Background	Alpha-synuclein is a member of the synuclein family, which also includes beta- and gamma-synuclein. Synucleins are abundantly expressed in the brain and alpha- and beta-synuclein inhibit phospholipase D2 selectively. SNCA may serve to integrate presynaptic signaling and membrane trafficking. Defects in SNCA have been implicated in the pathogenesis of Parkinson disease. SNCA peptides are a major component of amyloid plaques in the brains of patients with Alzheimer's disease. Four alternatively spliced transcripts encoding two different isoforms have been identified for this gene. [provided by RefSeq, Mar 2009]
Function	May be involved in the regulation of dopamine release and transport. Induces fibrillization of microtubule-associated protein tau. Reduces neuronal responsiveness to various apoptotic stimuli, leading to a decreased caspase-3 activation. [UniProt]
Calculated Mw	14 kDa
PTM	Phosphorylated, predominantly on serine residues. Phosphorylation by CK1 appears to occur on residues distinct from the residue phosphorylated by other kinases. Phosphorylation of Ser-129 is selective and extensive in synucleinopathy lesions. In vitro, phosphorylation at Ser-129 promoted insoluble fibril formation. Phosphorylated on Tyr-125 by a PTK2B-dependent pathway upon osmotic stress. Hallmark lesions of neurodegenerative synucleinopathies contain alpha-synuclein that is modified by nitration of tyrosine residues and possibly by dityrosine cross-linking to generated stable oligomers. Ubiquitinated. The predominant conjugate is the diubiquitinated form (By similarity). Acetylation at Met-1 seems to be important for proper folding and native oligomeric structure.

Images



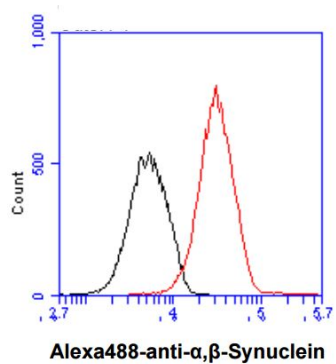
ARG56930 anti-alpha + beta Synuclein antibody [3B6] FACS image

Flow Cytometry: LNCaP cell line stained with ARG56930 anti-alpha + beta Synuclein antibody [3B6] at 2-5 µg for 1x10<sup>6</sup> cells (red line). Secondary antibody: Goat anti-Mouse IgG Alexa fluor 488 conjugate. Isotype control antibody was Mouse IgG (black line).



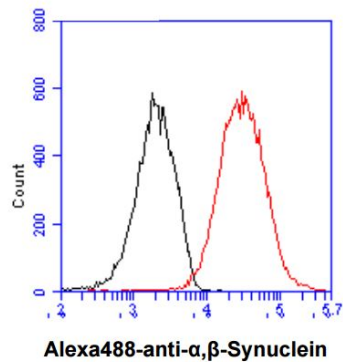
ARG56930 anti-alpha + beta Synuclein antibody [3B6] WB image

Western blot: 20 ng of the recombinant Human synuclein family (alpha-, beta- and gamma-) and 30 µg of Mouse brain and Rat brain stained with ARG56930 anti-alpha + beta Synuclein antibody [3B6] at 1:1000.



#### ARG56930 anti-alpha + beta Synuclein antibody [3B6] FACS image

Flow Cytometry: U87MG cell line stained with ARG56930 anti-alpha + beta Synuclein antibody [3B6] at 2-5  $\mu\text{g}$  for  $1 \times 10^6$  cells (red line). Secondary antibody: Goat anti-Mouse IgG Alexa fluor 488 conjugate. Isotype control antibody was Mouse IgG (black line).



#### ARG56930 anti-alpha + beta Synuclein antibody [3B6] FACS image

Flow Cytometry: C6 cell line stained with ARG56930 anti-alpha + beta Synuclein antibody [3B6] at 2-5  $\mu\text{g}$  for  $1 \times 10^6$  cells (red line). Secondary antibody: Goat anti-Mouse IgG Alexa fluor 488 conjugate. Isotype control antibody was Mouse IgG (black line).